



DHUB/DHUBX x.6.6 Camera Config Adjustments

Background

When a DHUB is associated with a Driver.i that has updated to x.6.6, Driver.i becomes the Access Point (AP) and the DHUB/DHUBX becomes the client.

Note:

The purpose of this guide is to enable post install camera config adjustments to the DHUB/DHUBX on a system with x.6.6 software.

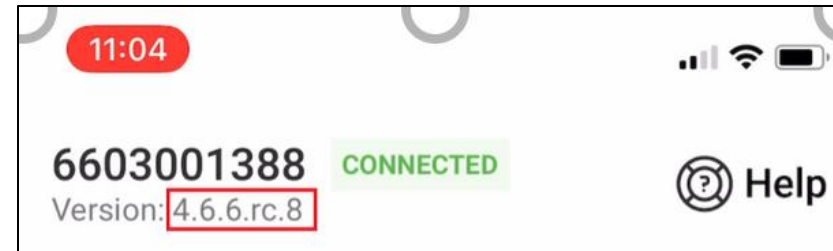
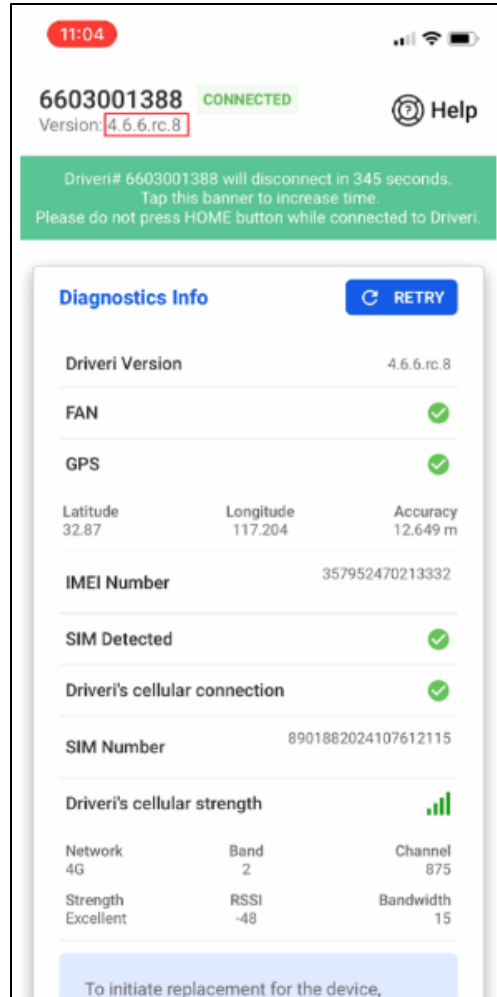
This procedure will change the DHUB/DHUBX from **Client Mode** to **AP Mode**, so that the Installer App can communicate directly to the DHUB/DHUBX and allow camera settings to be altered.

- Ensure the DHUB/DHUBX is in client mode. If the LED labelled “ERR” is solid red, the DHUB/DHUBX is in client mode.



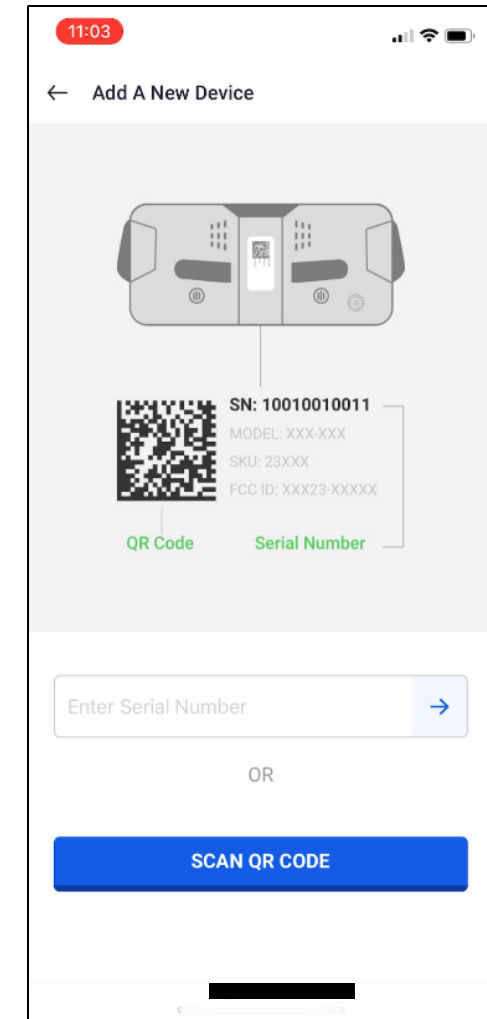
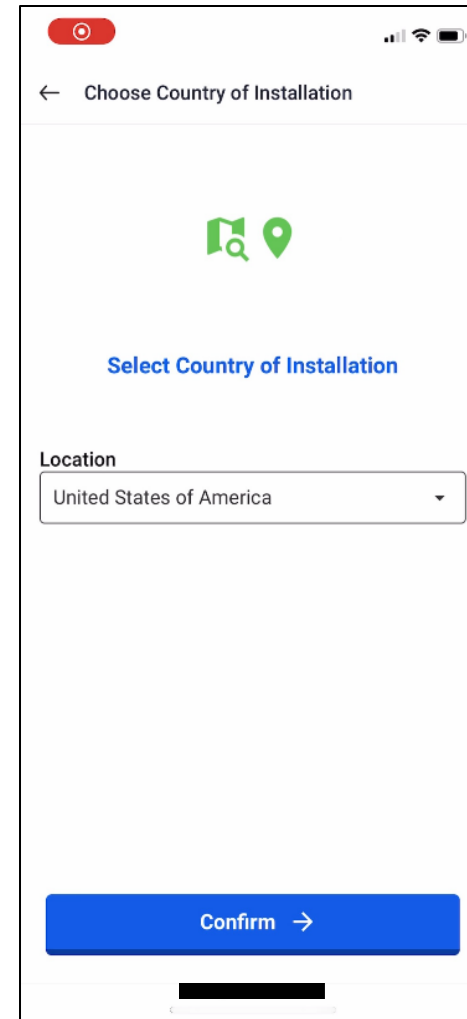
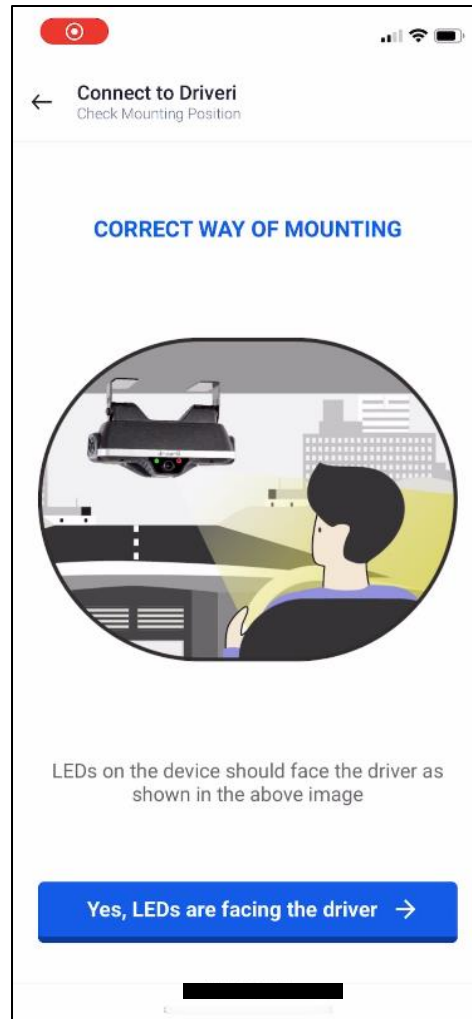
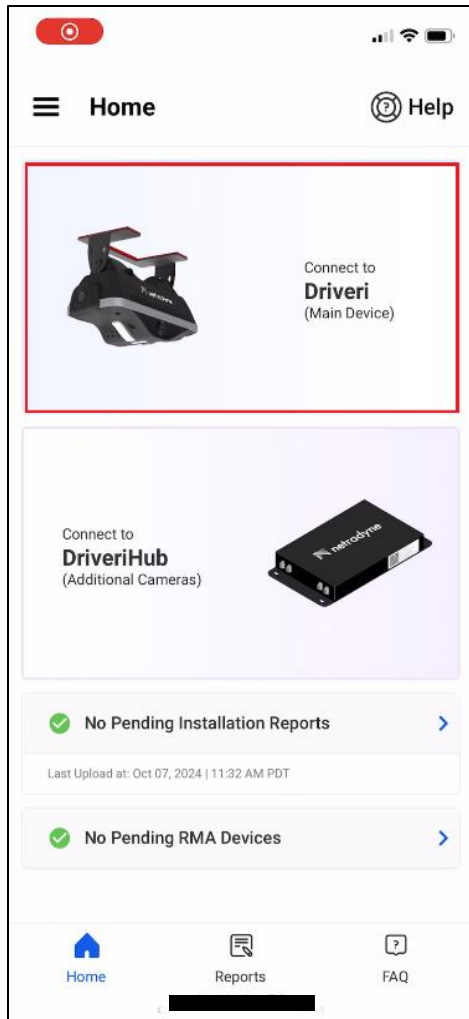
Device Software Verification

- Verify the Driver.i device is on version **x.6.6** on the Installer App. This can be verified with the Installer App once you successfully login, see below.



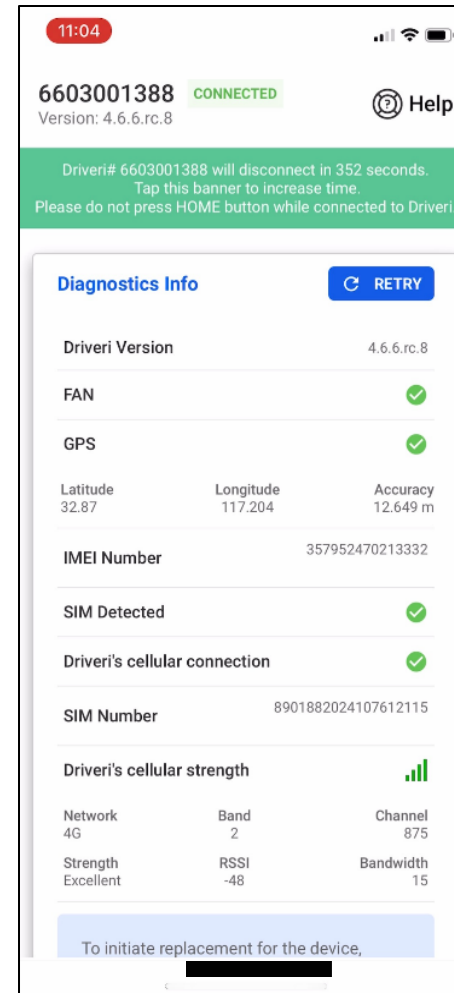
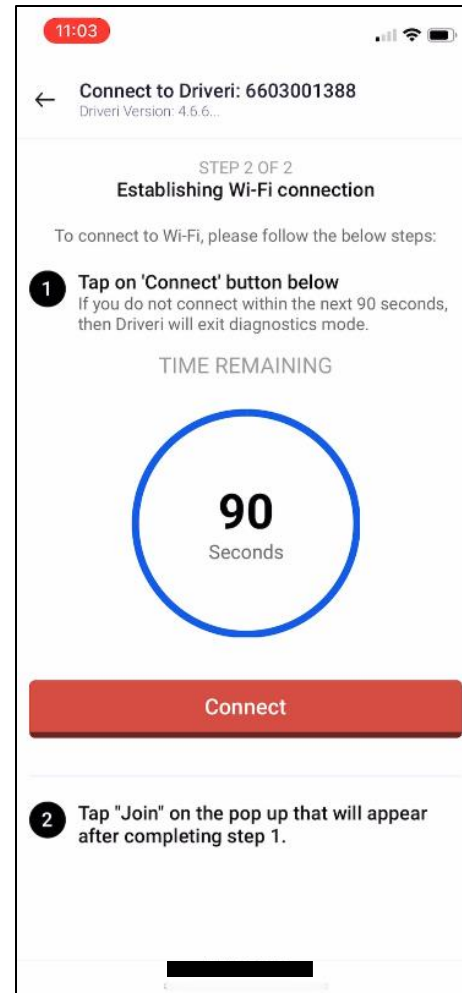
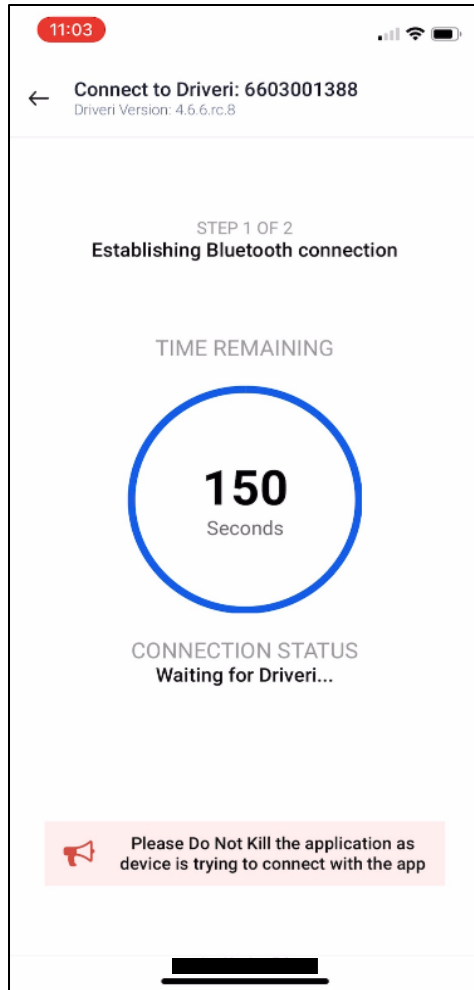
Procedure: Steps to go from Client Mode to AP

1. Connect Installer App to Driver.i (DHUB/DHUBX solid red LED) (Client Mode)



Procedure: Steps to go from Client Mode to AP

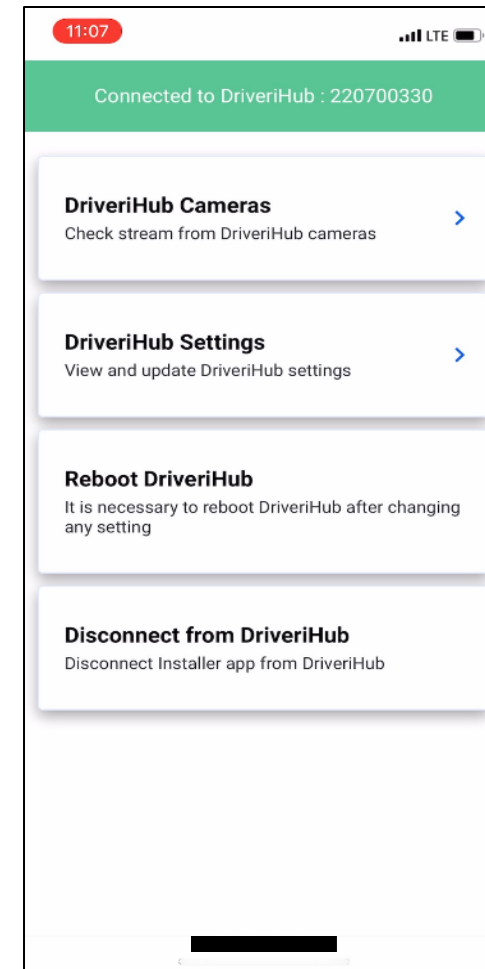
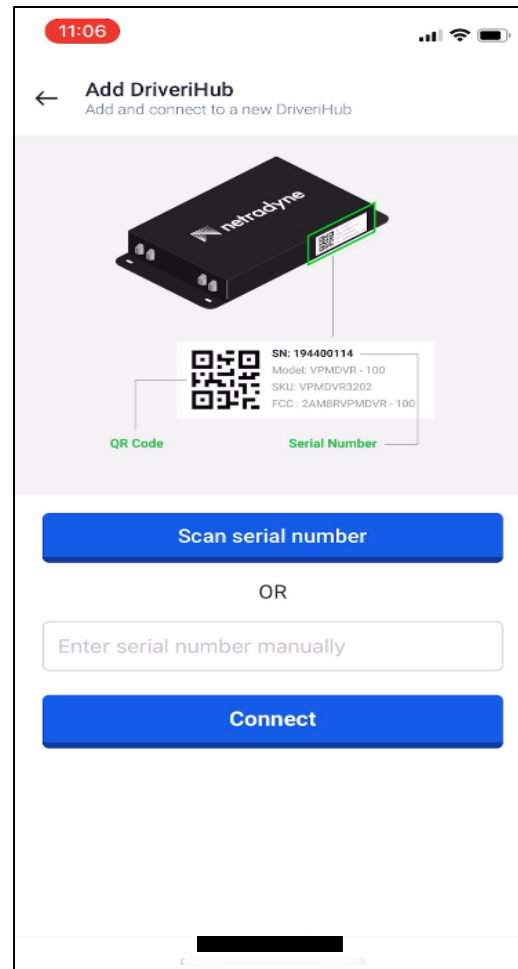
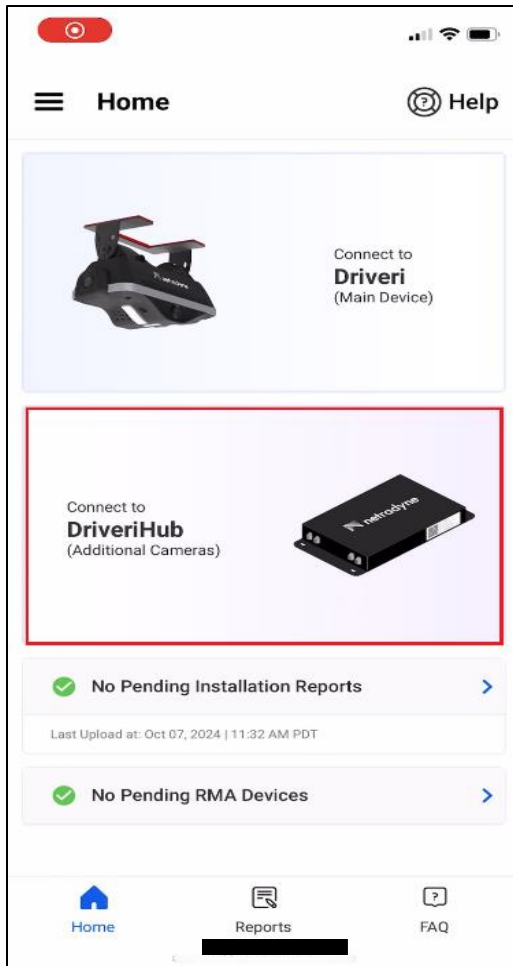
- Continued Connecting Driver.i to Installer App.



DHUB/DHUBX should reboot into AP Mode (blinking red LED) immediately after connecting. Disconnect the Installer App from the Driver.i

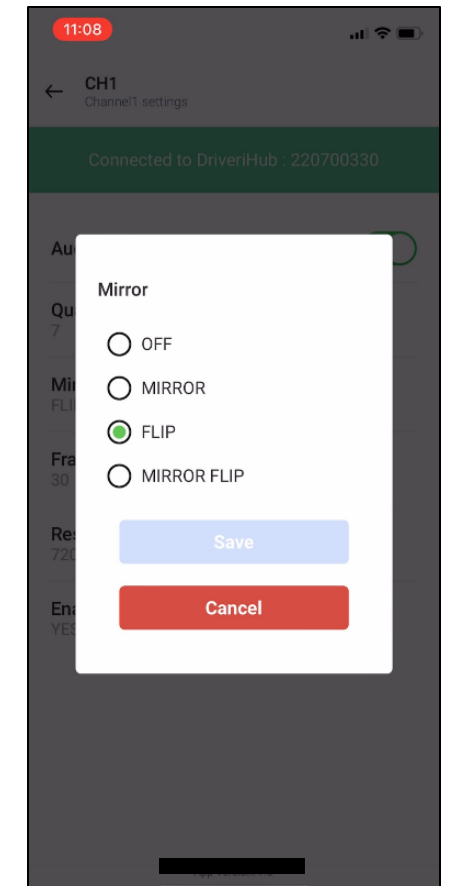
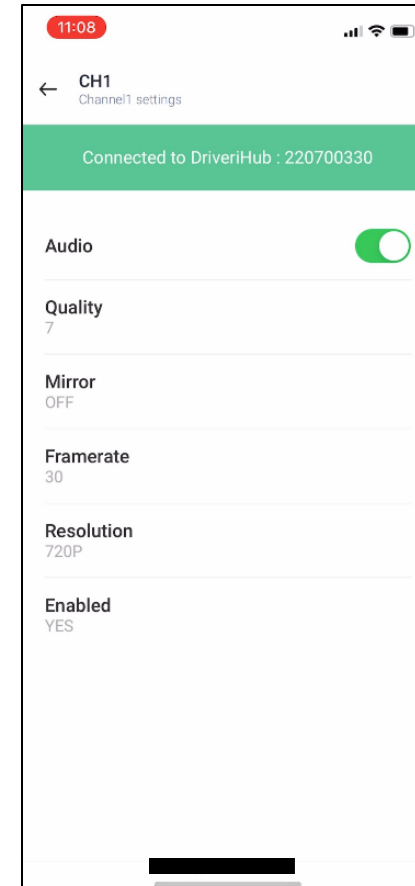
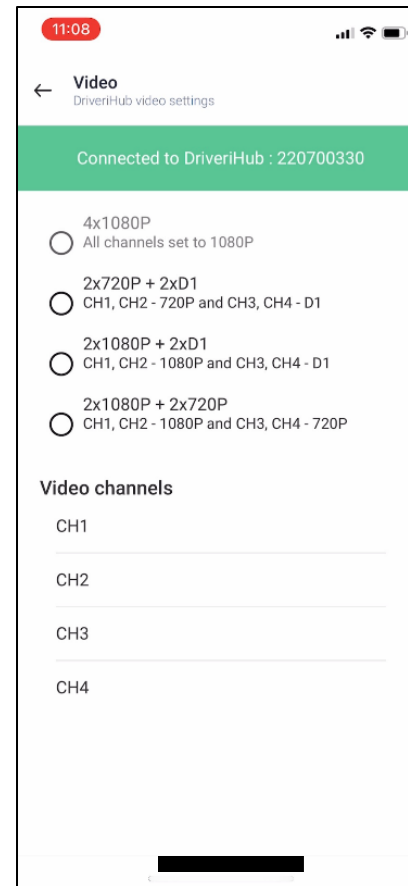
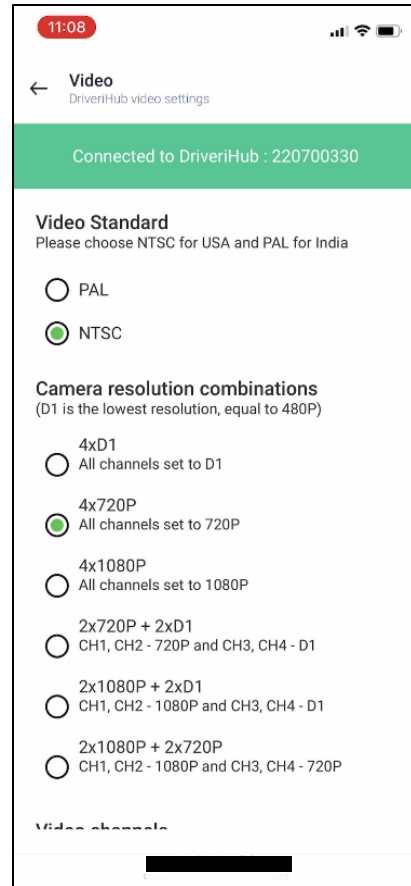
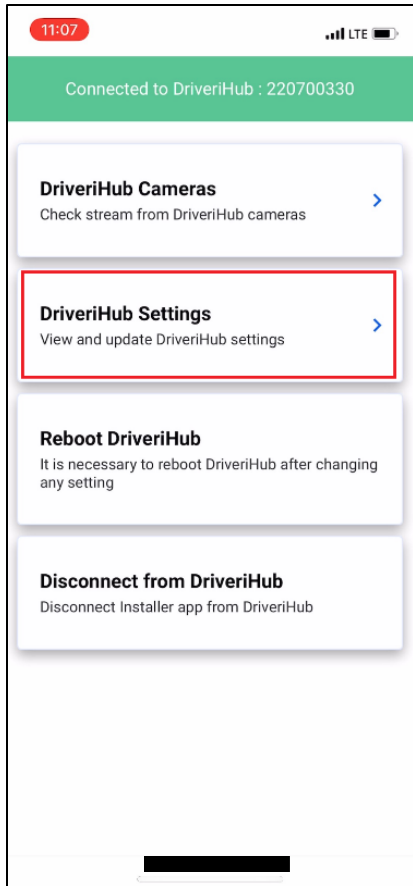
Procedure: Steps to change Camera Configurations

1. Connect to the DHUB/DHUBX. (DHUB/DHUBX blinking red LED) (AP Mode)



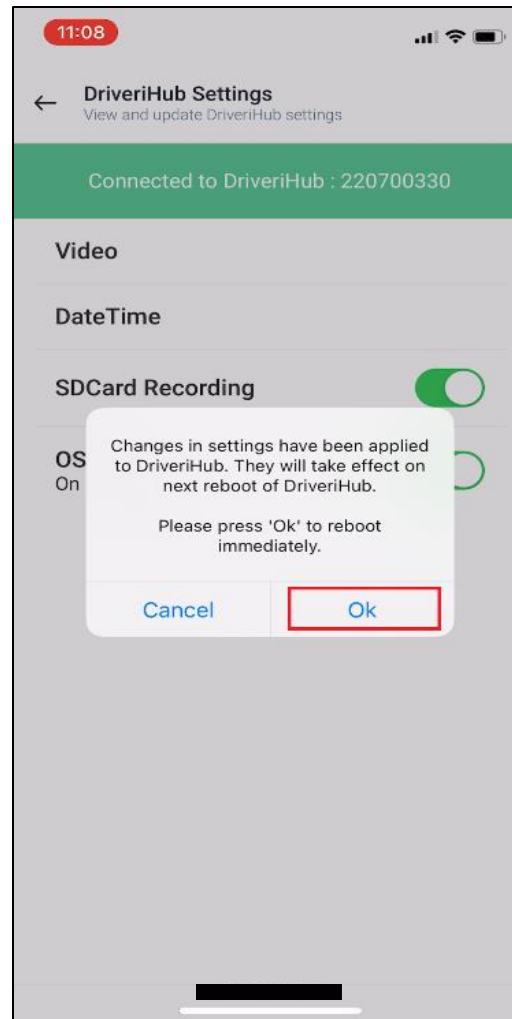
Procedure: Steps to change Camera Configurations

2. Adjust camera views, flip channels, etc. (DHUB/DHUBX blinking red LED) (AP mode)



Procedure: Steps to change Camera Configurations

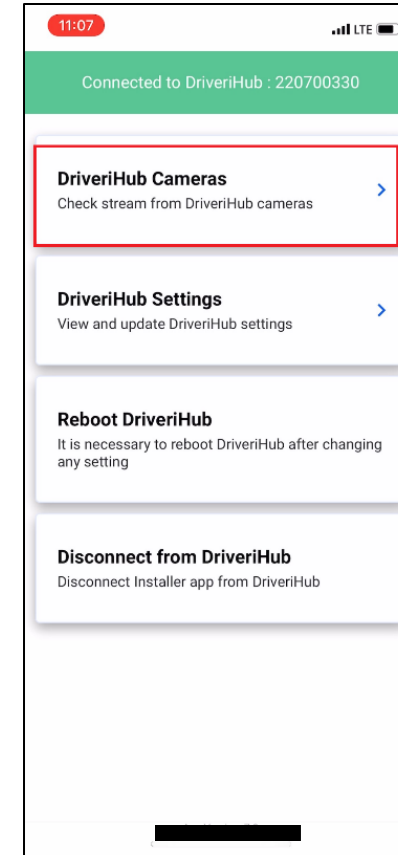
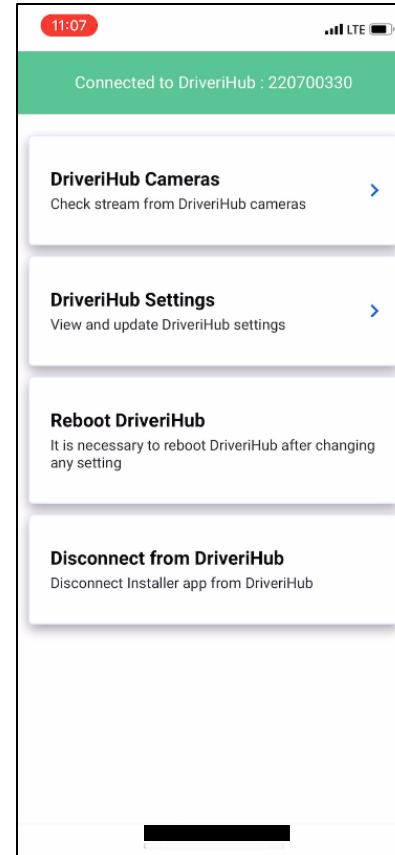
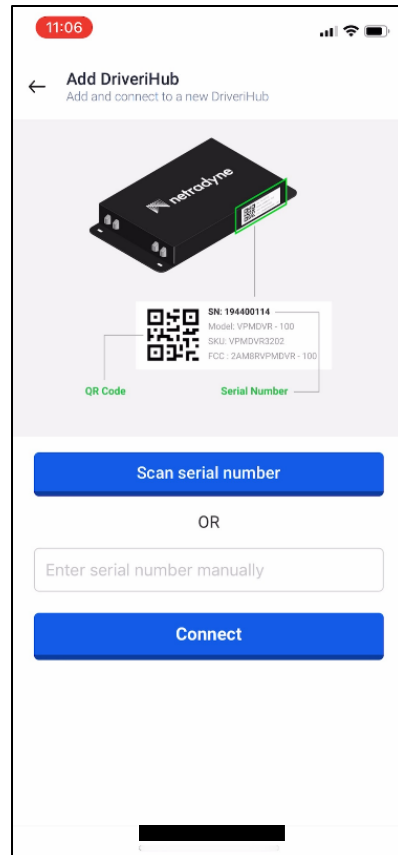
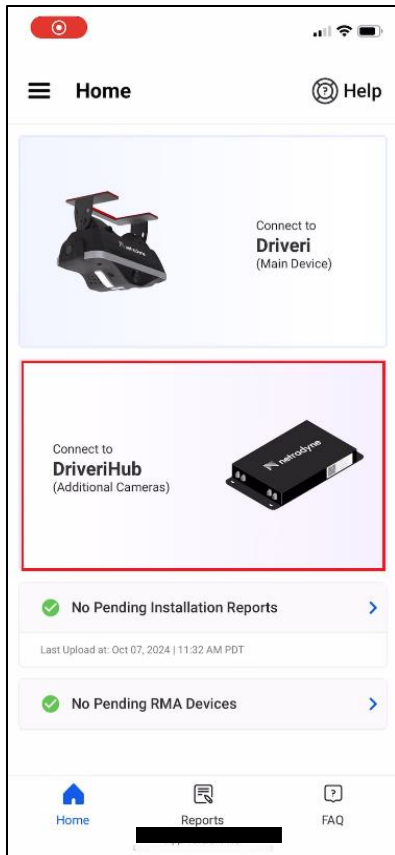
3. Reboot the DHUB/DHUBX for settings to take place (see popup below). The Installer App will disconnect from the DHUB/DHUBX automatically once this button is pushed. (DHUB/DHUBX blinking red LED) **(AP Mode)**



Procedure – Verifying Camera Configurations

1. Connect back to the DHUB/DHUBX. Verify that all camera views are working as expected.

(DHUB/DHUBX blinking **red** LED) (AP mode)



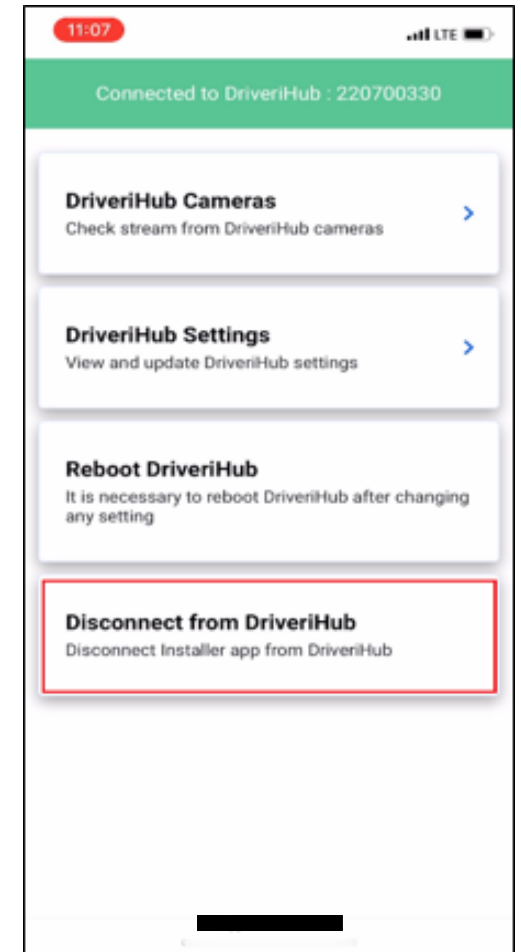
Procedure – Verifying Camera Settings

2. Disconnect from DHUB/DHUBX with Installer App. DHUB/DHUBX will automatically go back into client mode (DHUB/DHUBX Solid **red** LED) and reconnect to the Driver.i

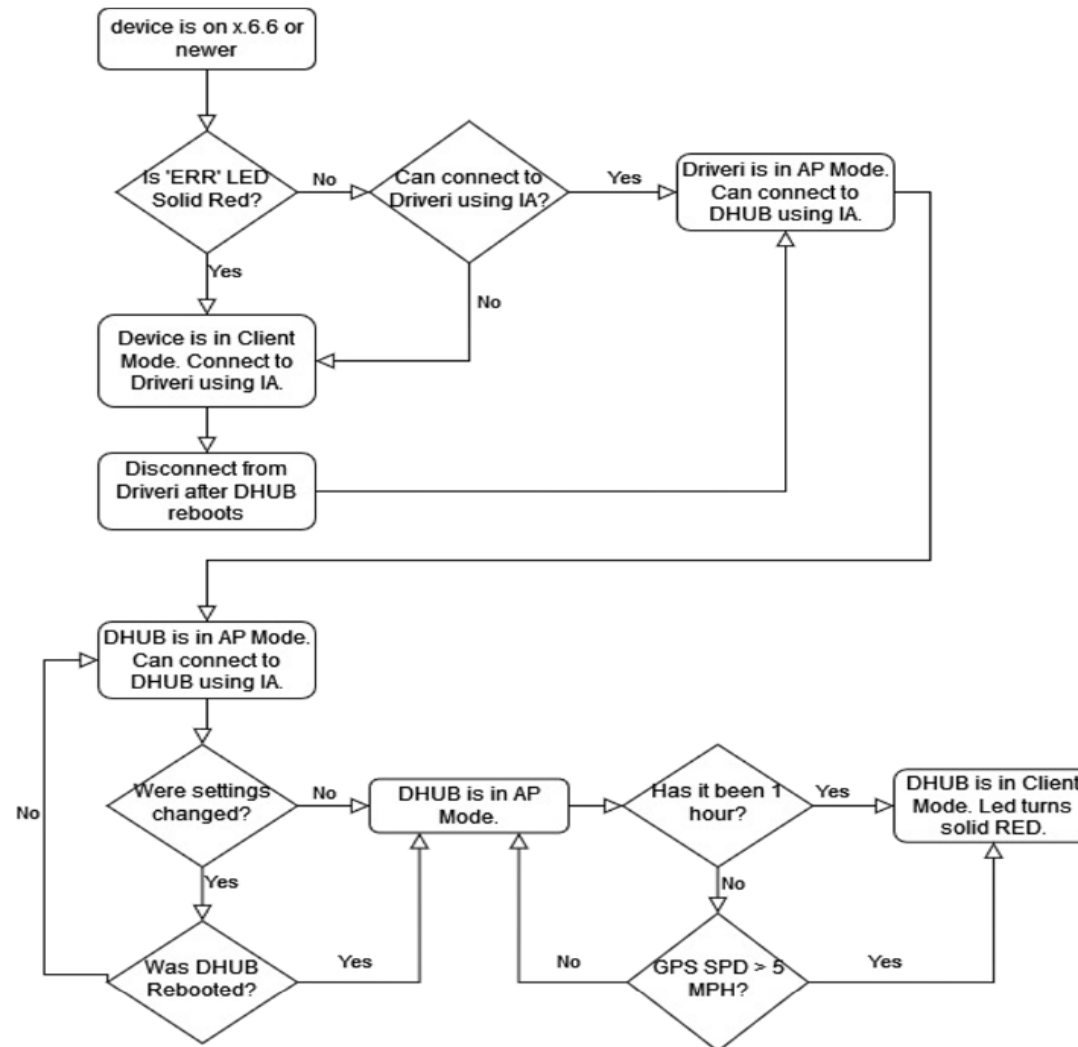
Under the following conditions:

- a. Trigger after 1 hour with vehicle idle
- b. after GPS speed > 5 mph (Client mode)

DHUB in Client Mode connected to Driver.i	Solid RED Light
DHUB in Client Mode not connected to Driver.i	Blinking RED Light
DHUB in AP Mode	Blinking RED Light



Workflow Chart



For questions or escalations, please visit Netradyne Support at www.netradyne.com/support
 Email: support@netradyne.com Phone: (833) GRN-ZONE or 833-476-9663