

Portal Updates

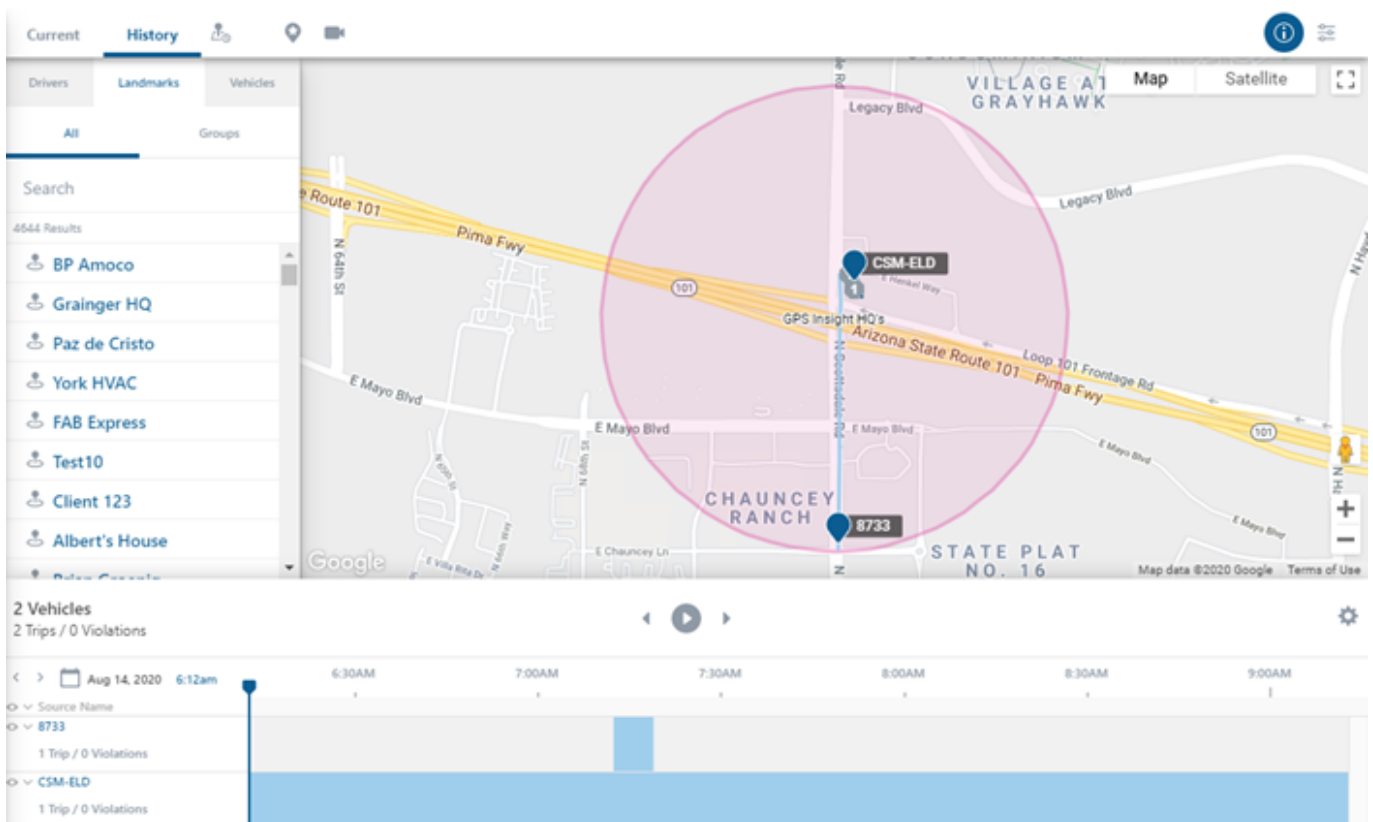
Link: <https://help.gpsinsight.com/release-notes-8-13-2020/> Last Updated: August 12th, 2020

This Product Release Notes announcement for GPS Insight **Standard, Pro and Enterprise** customers includes updates for Portal, Map and bug fixes.

Map & Portal

Landmark History

You can now view Landmark History on the map! Simply click on the History icon, then Landmarks to open Landmark History. Here you can see which vehicles were in a Landmark at a given time.



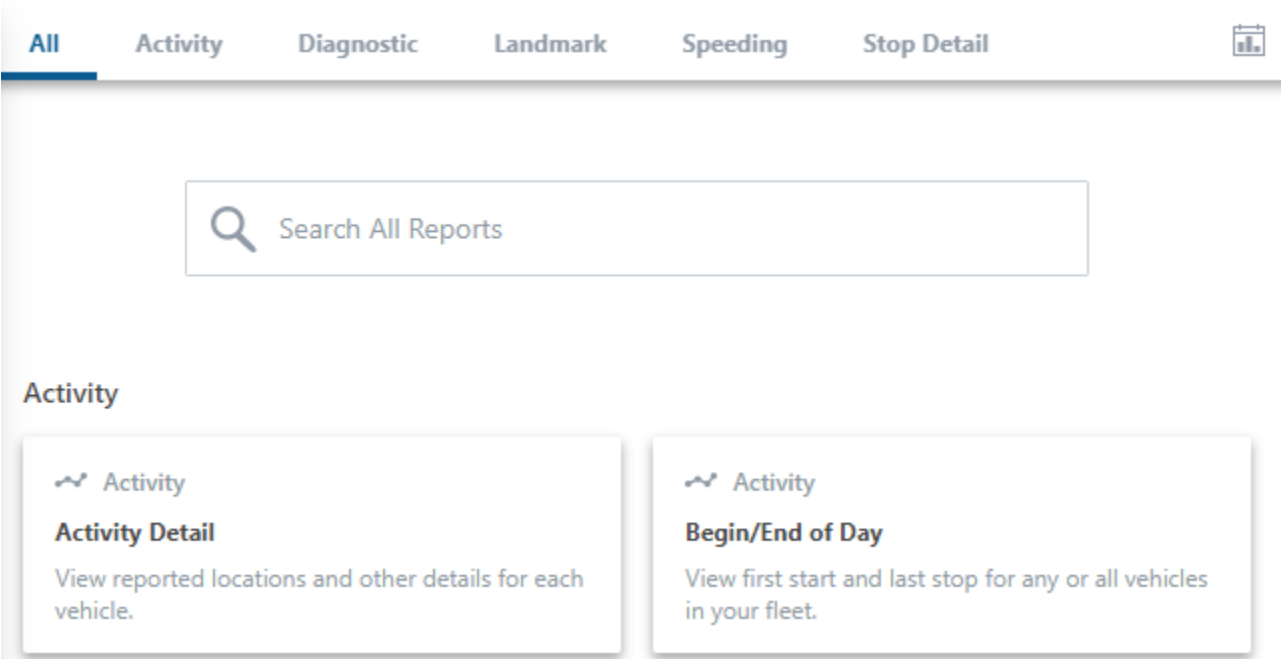
Note. For more information, see: [Using Landmark History.](#)

New Portal

- **Reports:** The Reports page now has 14 reports! Reports are organized into sections and there is now a search bar to search reports. Clicking the Calendar in the right-corner will take you to Classic Report Scheduler.

Portal Updates

Link: <https://help.gpsinsight.com/release-notes-8-13-2020/> Last Updated: August 12th, 2020



The screenshot shows a navigation bar with tabs: All, Activity, Diagnostic, Landmark, Speeding, and Stop Detail. Below the tabs is a search bar labeled "Search All Reports". Under the "Activity" tab, there are two cards: "Activity Detail" (View reported locations and other details for each vehicle) and "Begin/End of Day" (View first start and last stop for any or all vehicles in your fleet).

- **Home Page Cards:** Hours of Service (HOS) cards are now available on the Home Page. This card will link you to the HOS Portal.



Note. This will take you to the HOS login page.

GPS Insight Classic

Hours of Service

Click here to see your ELD Focus Hours of Service dashboard.

Hours of Service

Click here to see your ELD Flex Hours of Service dashboard.

Bug Fixes

Bug Fixes & Enhancements

- Bugs were fixed for the Portal and Map.
- UX enhancements were deployed.