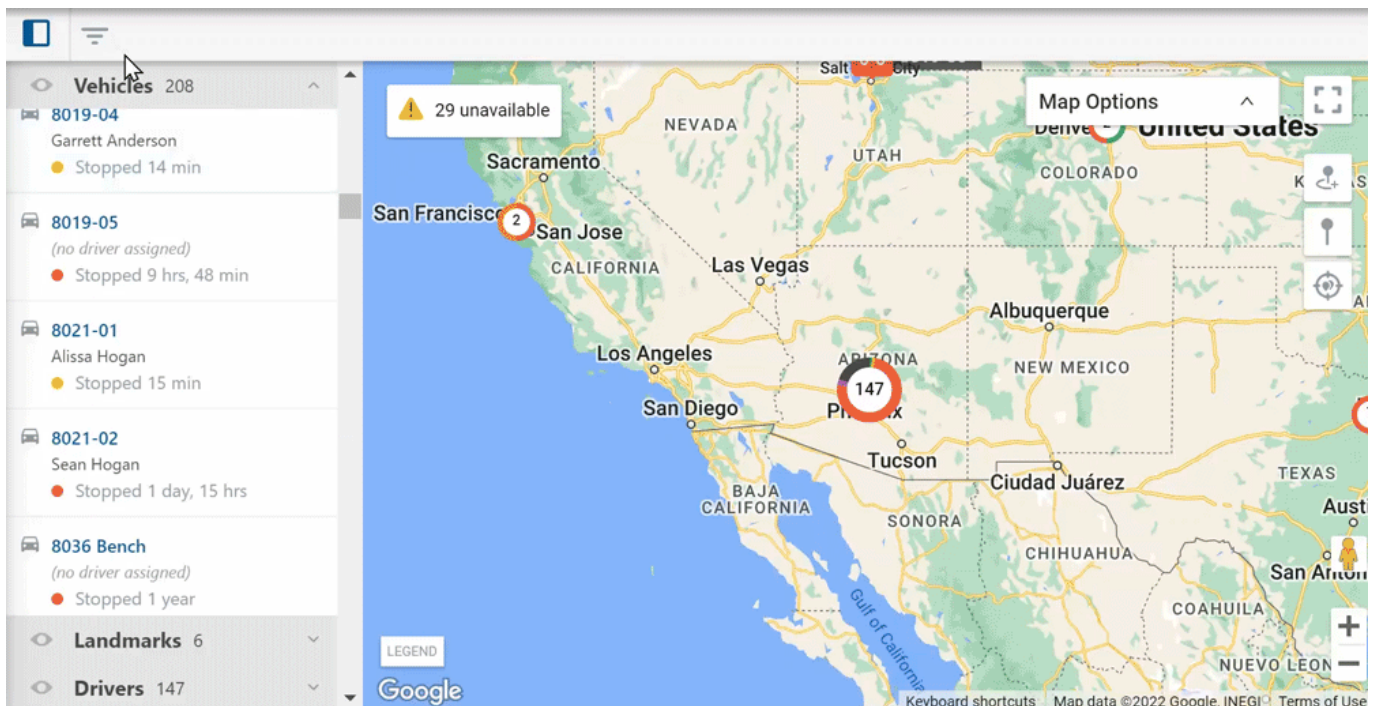


This Product Release Notes announcement for Enterprise customers includes updates for the Portal.

Portal

Map Filter Updated

The Map Filter has been updated to provide an improved UI. You may filter the map by vehicle, hierarchy, group, vehicle status, landmarks, and/or Driver from one location all at once. You may also filter the map to hide unavailable/out-of-range vehicles.



For more information about Map Lists, please see [Using Map Lists](#) and for more information on the Map, please see [About the Map Page](#).

Bug Fixes

Bug Fixes & Enhancements

- Bugs were fixed and enhancements deployed for the Portal and reports.
- UX enhancements were deployed.