

## Feature Updates

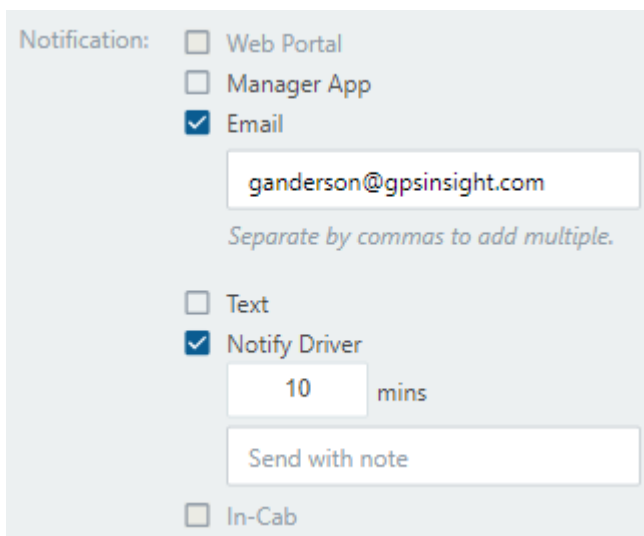
Link: <https://help.gpsinsight.com/release-notes-1-2-2020/> Last Updated: December 30th, 2019

This Product Release Notes announcement for GPS Insight **Pro and Enterprise** customers includes updates for Alerts, Map and Bug Fixes.

### Alerts

#### Send an Alert with a Note

You can now send a note to a driver when creating a new alert. Simply click on the Notify driver box to activate the message field.



The screenshot shows a notification configuration panel. Under the heading "Notification:", there are three checkboxes: "Web Portal" (unchecked), "Manager App" (unchecked), and "Email" (checked). Below the "Email" checkbox is a text input field containing the email address "ganderson@gpsinsight.com". A note below the input field reads "Separate by commas to add multiple." Below this, there are two more checkboxes: "Text" (unchecked) and "Notify Driver" (checked). Under "Notify Driver" is a numeric input field with "10" and the label "mins". Below that is a text input field containing "Send with note". At the bottom, there is an unchecked checkbox for "In-Cab".

For more information on creating alerts, see [Adding an Alert](#).

#### Diagnostic Alert - Battery Voltage Details

You can now view Battery Voltage details in the Diagnostic Alert for the ST-1100 and TT-2200.

##### ST-1100:

- Low Internal Battery Alert (default threshold = 6.9)
- Internal Battery Critical Alert (default threshold= 6.5)

##### TT-2200:

- Internal Battery Percentage

For more information on Alerts, see: [About Alerts](#).

### Map

## Feature Updates

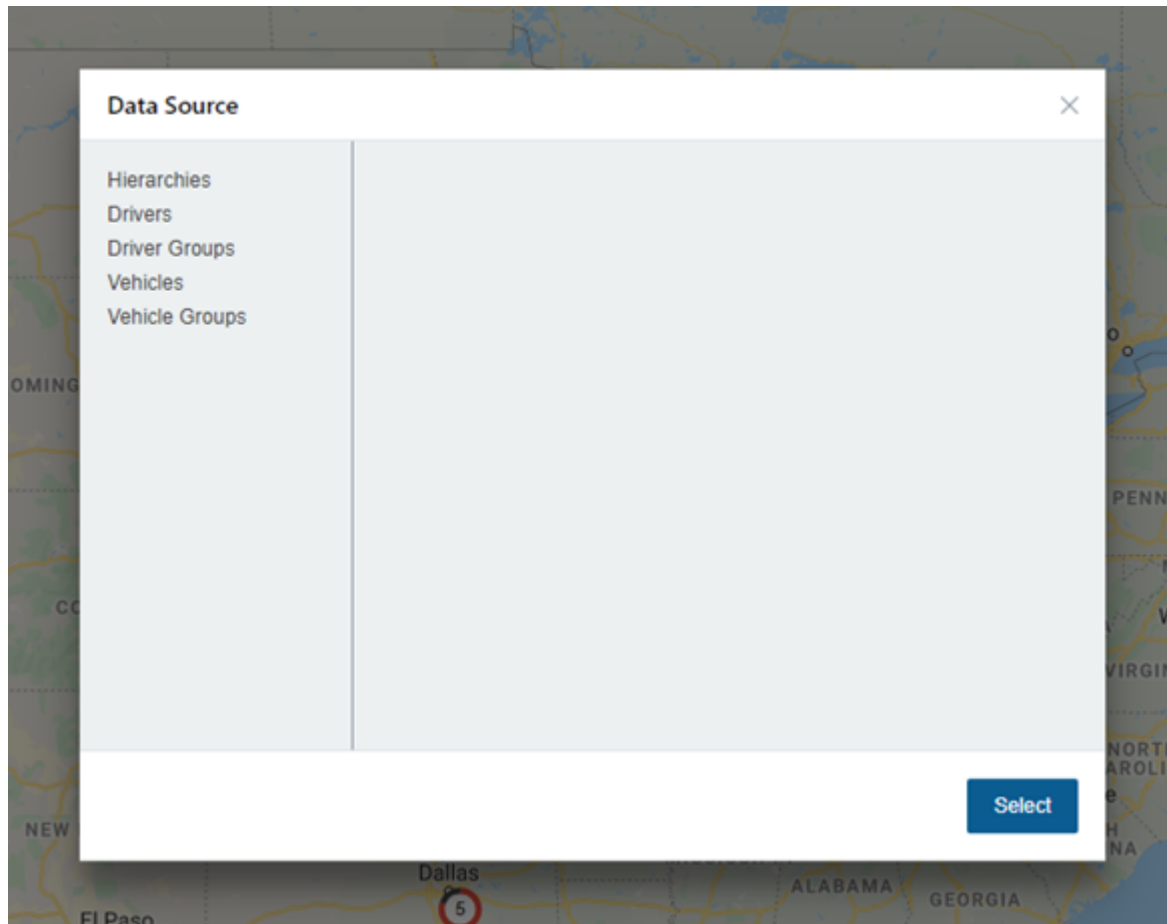
---

Link: <https://help.gpsinsight.com/release-notes-1-2-2020/> Last Updated: December 30th, 2019

### Data Source Selector - Update

Driver and Driver Groups have been added to the Data Source Selector within the Vehicles List on the New Map.

Simply click on **ALL VEHICLES** to view the data source options.



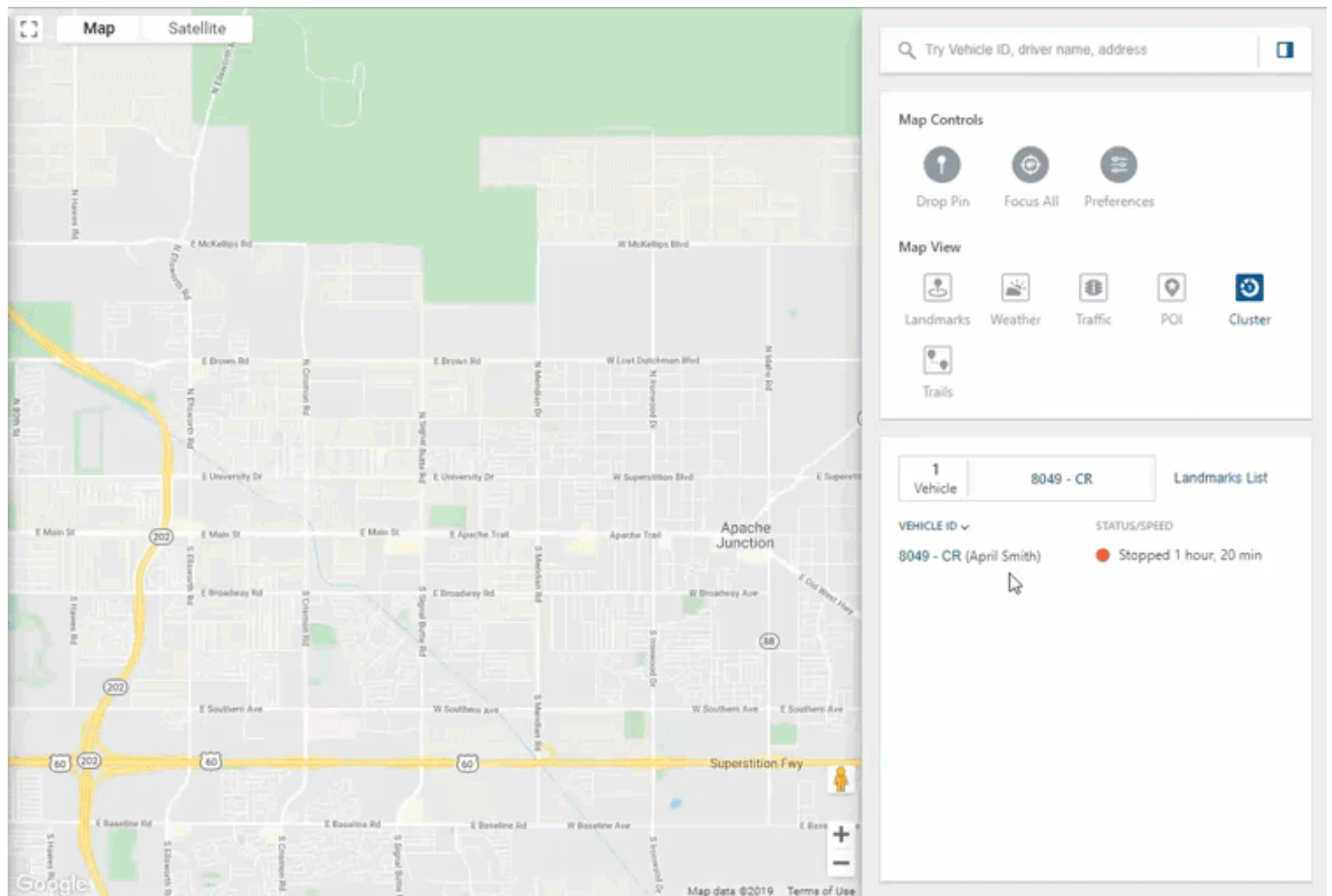
For more information on the Map, see [About the Map - New](#)

### Trip History Playback - Update

You can now zoom in on the Trip History Playback scrubber.

## Feature Updates

Link: <https://help.gpsinsight.com/release-notes-1-2-2020/> Last Updated: December 30th, 2019



For more information on Trip History Playback and the Map, see [About the Map - New](#)

## Bug Fixes

### Bug Fixes & Enhancements

- Bugs were fixed for the Portal and Mobile Apps
- UX enhancements were deployed.