

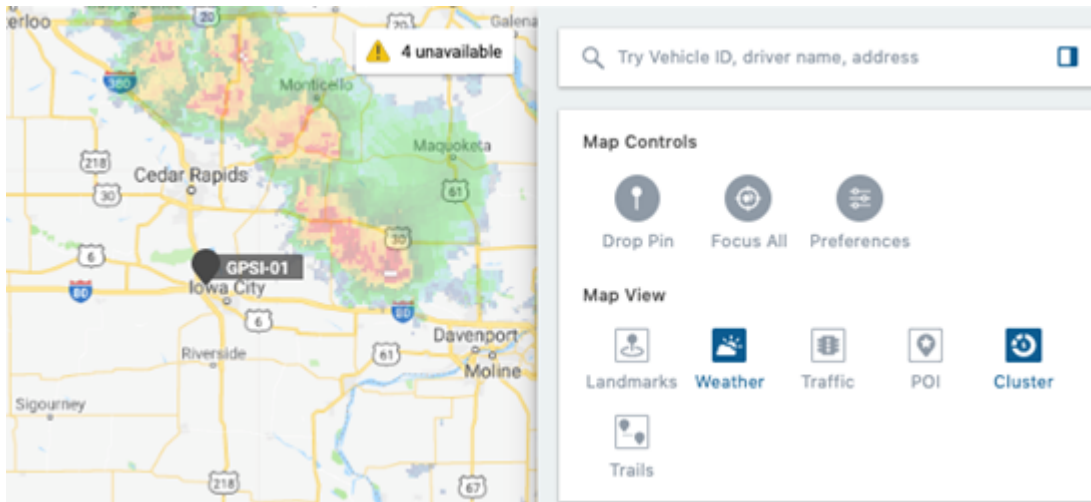
Link: <https://help.gpsinsight.com/release-notes-09-26-2019/> Last Updated: September 24th, 2019

This Product Release Notes announcement for GPS Insight **Pro and Enterprise** customers includes updates for Map, Reports, Admin and Bug Fixes.

Map

Map - Weather Overlay

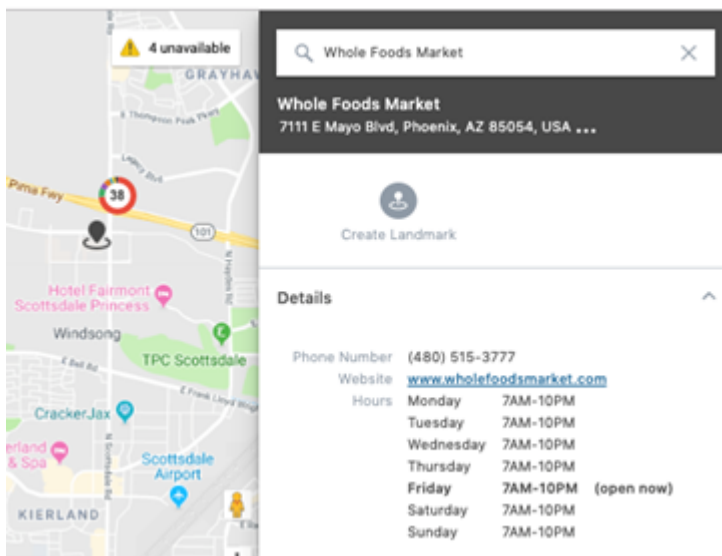
The Weather Overlay is a new map layer that allows you to view the current weather radar in your fleet's area.



See [About the Map](#) for additional information.

Map - POI Card

The POI Card shows you details of recently searched and selected points of interest.



See [About the Map](#) for additional information.

Reports

Driver Centric Reports

The following Reports can now be run by Drivers!

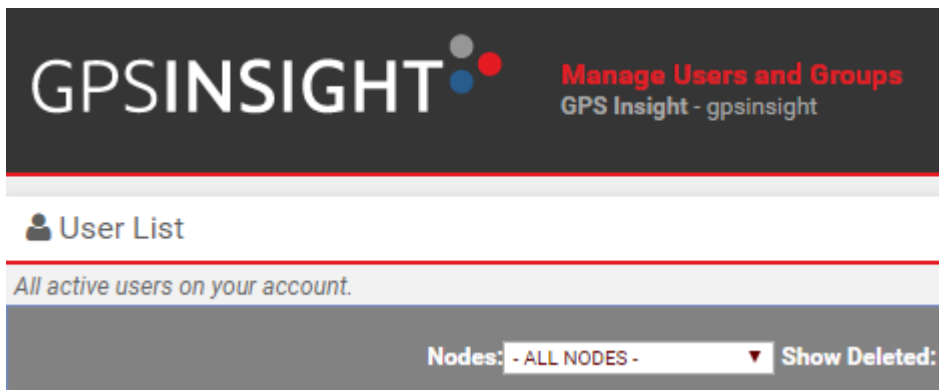
- Alert History Report
- Odd-Hours Alert Report
- Begin End of Day Report
- Idle Time Summary Report

See [About Reports](#)[Available Reports](#) for additional information.

Administrative

Hierarchy User List - Defaults to All Users

The Hierarchy User list now defaults to ALL NODES (Users) to help ease the search process.



See [About Users](#) for additional information.

Bug Fixes

Bug Fixes & Enhancements

- Bugs were fixed for the Portal and Mobile Apps
- UX enhancements were deployed.