

# Product Features and Updates - 6/27/2016

## Feature Updates

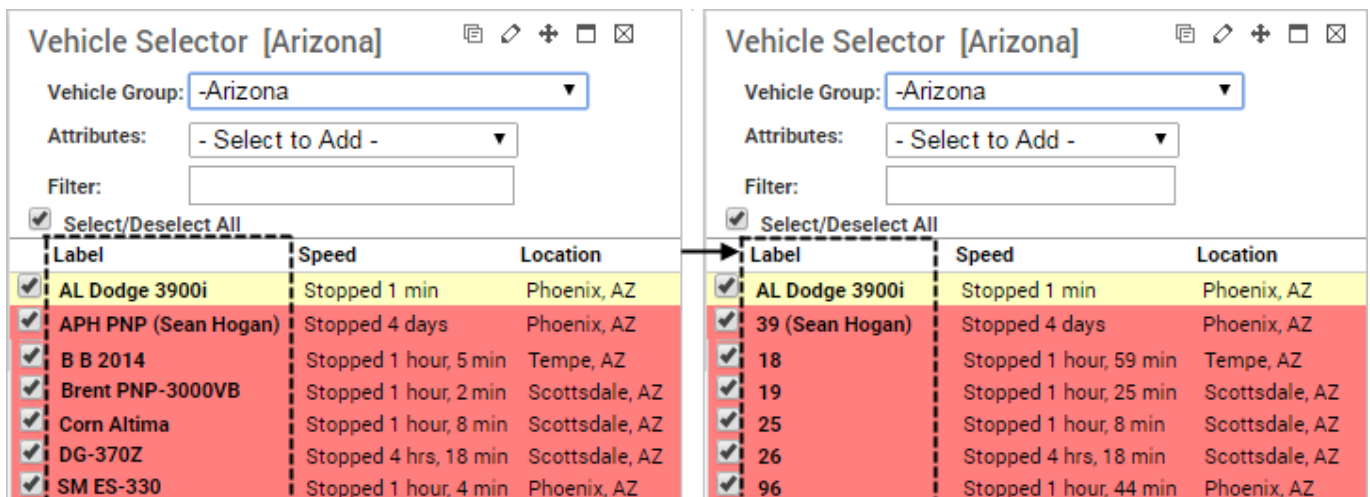
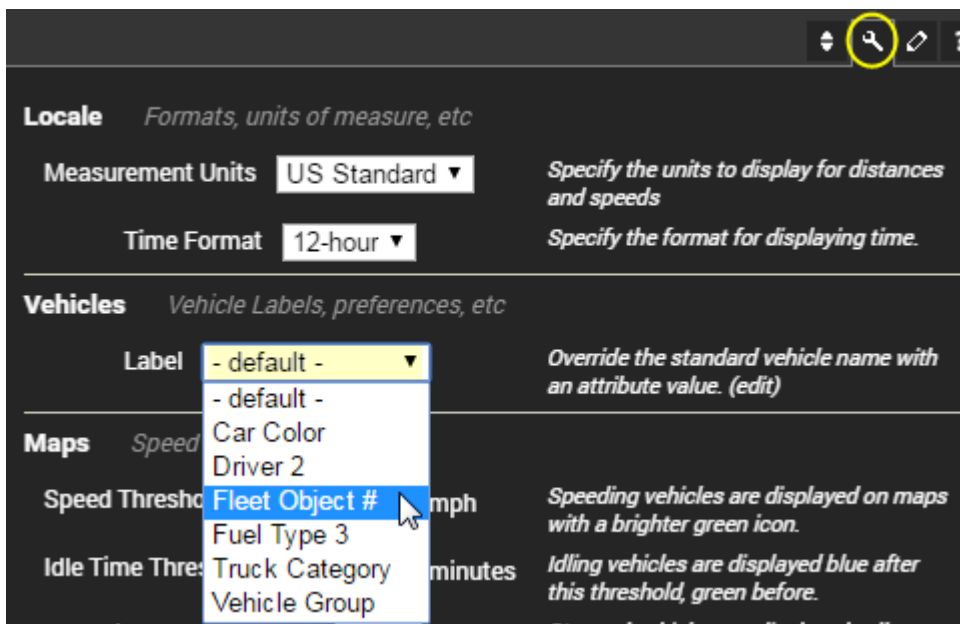
Link: <https://help.gpsinsight.com/product-features-and-updates-6272016/> Last Updated: July 26th, 2016

This Product Features and Updates announcement for GPS Insight Pro/Enterprise includes updates for Dashboards, Maps, Reports, and Administration functions.

## Dashboard Updates

### User Preferences - Updated Option

The Label option in **user preferences** allows you to override the standard vehicle name with an **attribute value** (must be vehicle-specific and alphanumeric). The change applies globally (dashlets, reports, maps, and administrative pages) in the portal. The setting is specific to the logged in user.



If an attribute value is not assigned to a vehicle, the override does not affect that vehicle. The original vehicle

# Product Features and Updates - 6/27/2016

## Feature Updates

Link: <https://help.gpsinsight.com/product-features-and-updates-6272016/> Last Updated: July 26th, 2016

label persists.

### Assign Vehicle Attributes: Fleet Object #

Assign values (alphanumeric) to vehicles for the Fleet Object # attribute

Fuel Card:  Garmin:  Vehicle Group:  Search:  \* for wildcard

Page: 1-20 / [21-40](#) / [41-60](#) / [61-80](#) / [81-100](#) / [101-119](#) Show All 119:

Vehicle	Fleet Object #
AL Dodge 3900i	
AL Liberty (Burnham, Clint)	
APH PNP (Hogan, Sean)	39
AT-3000V1 Batt Test	
AVG ELD	17
AZ Jetta - DA	
B B 2014	18

Download: [Excel](#), [CSV](#) Enter values for each Vehicle in the 'Fleet Object #' column.

## Map Updates

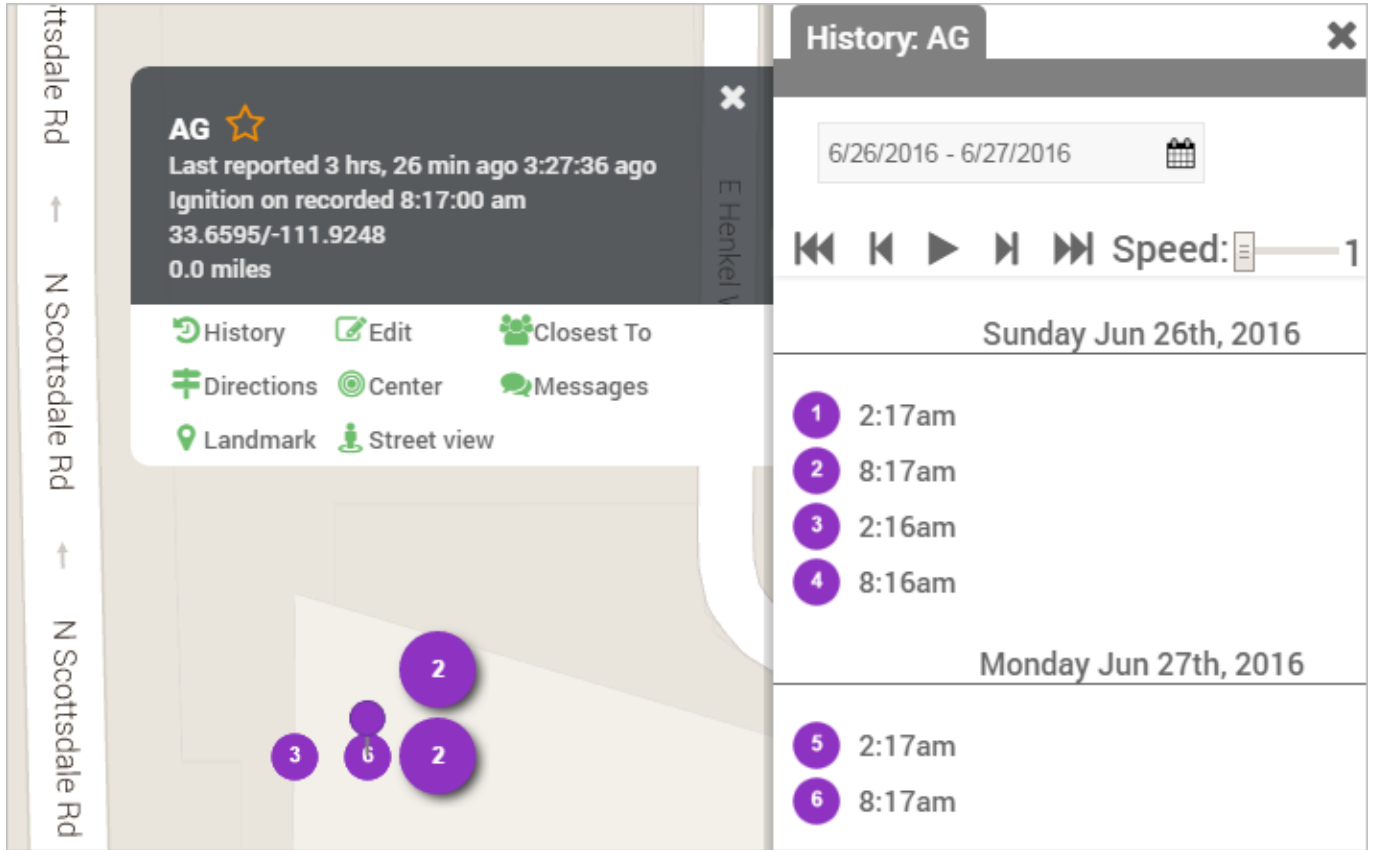
### Map Dashboard - New History Option for Assets

History is available for assets in the [map dashboard](#). Except for the [ST-1100](#), asset history does not include a path (dots only).

# Product Features and Updates - 6/27/2016

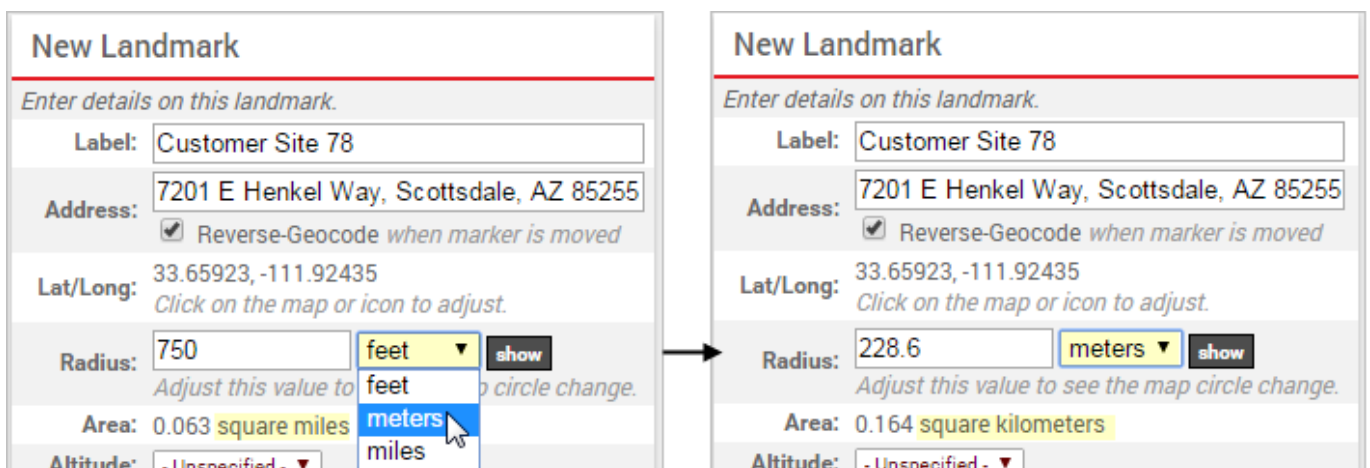
## Feature Updates

Link: <https://help.gpsinsight.com/product-features-and-updates-6272016/> Last Updated: July 26th, 2016



## Landmark Editor - Updated to Support Metric Units

The **Landmark Editor** includes a new option to support metric units for the radius. If you change the unit of measurement from **feet** or **miles** to **meters**, the estimated Area adjusts from **square miles** to square kilometers:



# Product Features and Updates - 6/27/2016

## Feature Updates

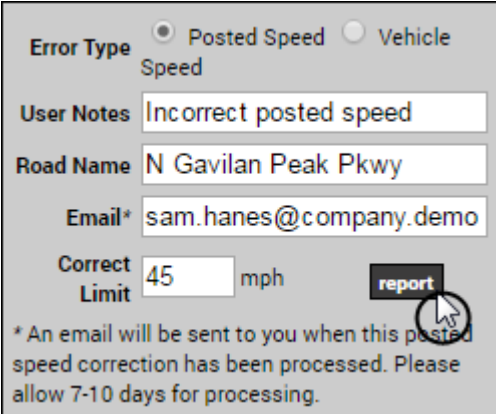
---

Link: <https://help.gpsinsight.com/product-features-and-updates-6272016/> Last Updated: July 26th, 2016

### Report Updates

## Report Bad Posted Speed - Updated Input

When you report an incorrect speed, the form includes an input field for email address. If you enter an email address, you will receive notification when the speed correction has been processed (typically 7-10 days).



The screenshot shows a web form for reporting a speed error. It includes the following fields and elements:

- Error Type:** Radio buttons for "Posted Speed" (selected) and "Vehicle Speed".
- User Notes:** Text input field containing "Incorrect posted speed".
- Road Name:** Text input field containing "N Gavilan Peak Pkwy".
- Email\*:** Text input field containing "sam.hanes@company.demo".
- Correct Limit:** Text input field containing "45" followed by "mph".
- report:** A black button with white text, which is being clicked by a mouse cursor.
- Footnote:** A small asterisked note at the bottom: "\* An email will be sent to you when this posted speed correction has been processed. Please allow 7-10 days for processing."

### Administrative Updates

## Vehicle Management - New Icon

A new icon in the [Vehicle List](#) indicates whether a device has an ELD attached.

# Product Features and Updates - 6/27/2016

## Feature Updates

Link: <https://help.gpsinsight.com/product-features-and-updates-6272016/> Last Updated: July 26th, 2016

### Vehicle List

View a full list of your vehicles. Click on values in the Vehicle, VIN, Driver, or Odometer columns to edit the values.

Deactivated:  Fuel Card:  Garmin:  Polygon:  Paste from Google Earth

Vehicle Group: - ALL GROUPS - Search:  \* for wildcard **filter**

Page: 1-25 / [26-50](#) / [51-75](#) / [76-100](#) / [101-119](#) Show All 119:

Vehicle	VIN	Serial #	Driver	Reported	Odometer
AL 3500	1J8EL58K13M674076	3248827814	not set	6 hours ago	247,572 mi.
AVG ELD	CARBK132714	464132714	not set	1 hour ago	118,241 mi.
AZ Jetta - DA	3VW5K39K0E140814	464213777	not set	27 days ago	192,311 mi.
Has ELD attached	1FT7X1E570F88452	464132342	not set	3 hours ago	67,512 mi.
Adam G Camry	4T1B81FK10U00462	464213674	Linda	11:58:45 am	59,083 mi.

Register New: [Vehicle](#) or [Asset](#) Download: [Excel](#), [CSV](#)

## Vehicle Management - New Configuration Options for PNP

Some **PNP devices** include an optional buzzer feature. When enabled the device uses recommended thresholds that alert drivers for rapid acceleration, harsh braking, hard right and left turning events, and idling (5 minutes).

Users with **Vehicle Admin** permissions can reset the thresholds that were set at the time of shipment/installation using the **PNP Threshold Configuration** management page. You can apply your preferred defaults to all applicable devices, or you can configure device settings individually.



**Note.** Because these are device-level hardware settings, changing device configuration requires the device to restart; therefore, adjust these settings infrequently and during off hours as much as possible.

# Product Features and Updates - 6/27/2016

## Feature Updates

Link: <https://help.gpsinsight.com/product-features-and-updates-6272016/> Last Updated: July 26th, 2016

### PNP Threshold Configuration

#### PNP devices w/buzzer

- Vehicle: **Lambo Test** Serial: **4542160611**  
Accel:  g Decel:  g Corner:  g Idle:  sec No Settings
- Vehicle: **DG-Desk Buzz** Serial: **4542165112**  
Accel:  g Decel:  g Corner:  g Idle:  sec No Settings Queued
- Vehicle: **DG-Buzz** Serial: **4542165135**  
Accel:  g Decel:  g Corner:  g Idle:  sec No Settings Finished
- Vehicle: **Chads Test Smog 42h buzzer** Serial: **4542162671**  
Accel:  g Decel:  g Corner:  g Idle:  sec No Settings
- Vehicle: **Adam G Prius (PNP Test)** Serial: **4542157350**  
Accel:  g Decel:  g Corner:  g Idle:  sec No Settings

#### Default PNP Configuration Options

Configuration Option	Value
Acceleration threshold (g)	<input type="text" value="0.25"/>
Deceleration threshold (g)	<input type="text" value="0.31"/>
Cornering threshold (g)	<input type="text" value="0.24"/>
Idling threshold (sec)	<input type="text" value="300"/>
Speeding threshold (mph)	<input type="text" value="70"/>

**Copy defaults to open devices**



**Note.** The default options on the right do NOT show what your devices were or are currently programmed with. This area allows you to set NEW default preferences for your account. You can set the thresholds for more than one device at a time using your preferred defaults, but there is no batch process for uploading the settings to each device. See the documentation for [detailed steps](#) on the configuration process.

## Metrics Management - Updated User Interface

The **Scorecard Configuration** tool now displays an updated UI that is more consistent with other administrative pages:

# Product Features and Updates - 6/27/2016

## Feature Updates

Link: <https://help.gpsinsight.com/product-features-and-updates-6272016/> Last Updated: July 26th, 2016

### Quick Overview

Number of Vehicles: 119

#### Aggressive Driving XYZ Scorecard

Overall Combined

Legend: Overall (Blue), Count Speeding Events Posted 11 (Black), Count Acceleration Events (Green), Count Deceleration Events (Orange)

### Aggressive Driving XYZ

*Note: Changing metric options, score weights, and scales will affect the scores historically. It may not be a good idea to convey scores until parameters are no longer being edited.*

Name: Aggressive Driving XYZ

Add A Metric: Select Metrics Type...

Save Edits Save Scorecard Delete Scorecard

Count Speeding Events Posted 11 50%

Count Acceleration Events 25%

Count Deceleration Events 25%

Final Score Colors

0% 50% 100%

### Vehicle List

Overall Score: 93

Vehicle	Current Driver	Miles	Drive Time	Count Speeding Events Posted 11	Count Speeding Events Score	Count Acceleration Events	Count Acceleration Events Score	Count Deceleration Events	Count Deceleration Events Score	Rank (sorted by score then vehicle label)	Final Score
SN - PNPvb		383.3	5.69	216	0	13	0	7	0	119	6
Brent PNP-3000VB		34.5	0.99	17	0	5	17	6	0	118	4
James Ford C-Max		410.2	7.22	14	0	4	33	16	0	117	9
CGTest		55.1	1.24	7	0	5	17	4	33	116	10
Xterra2	Rhoades, Kirk	60.5	2.05	2	67	4	33	4	33	113	50
Adam 3900iVB		95	2.04	7	0	0	100	0	100	113	50
AL Dodge 3900i		67.7	2.46	8	0	0	100	0	100	113	50
RM Taco Truck		241	4.99	0	100	7	0	3	50	112	63
RussellELD	Russell, Danielle	39.5	1.34	0	100	4	33	4	33	110	67
Tundra Scott	Harder, Scott	47.7	1.41	0	100	6	0	2	67	110	67
Patty PNP		16.1	0.7	0	100	0	100	7	0	108	76