

Product Features and Updates - 2/6/2017



Feature Updates

Link: <https://help.gpsinsight.com/product-features-and-updates-262017-s/> Last Updated: February 15th, 2017

This Product Features and Updates announcement for GPS Insight **Standard** includes updates for Reports and Administrative Features.

Reports

Driving Policy Violations Reports - New Summary and Detail

New reports are available for Driving Policy Violations, which include Acceleration, Deceleration, Cornering, Idling, and Speeding. The violation thresholds for these categories are set on a device level at the time of shipment/installation. To set new defaults for your vehicles, use the **PNP Threshold Configuration manager**.

Report Type	Description
Driving Policy Violations Detail / Summary	<p>Detail - Show details on Policy Violations reported by supported diagnostic devices (PNP-3000 buzzer-enabled + others*). Filter by vehicle/group. Sort columns in the report by Vehicle, VIN, Violation Time, and Violation Type.</p> <p>Summary - Show a summary of Policy Violations reported by supported diagnostic devices (PNP-3000 buzzer-enabled only). Filter by vehicle/group. The report shows a series of graphs for Violations by Type, Vehicles with Most Violations, Total Violations, and Violations per 100 miles. Sort columns by Vehicle, Distance, Violations per 100 miles, Hard Braking, Hard Left, Hard Right, Idling, Rapid Acceleration, Speeding, and Total.</p>

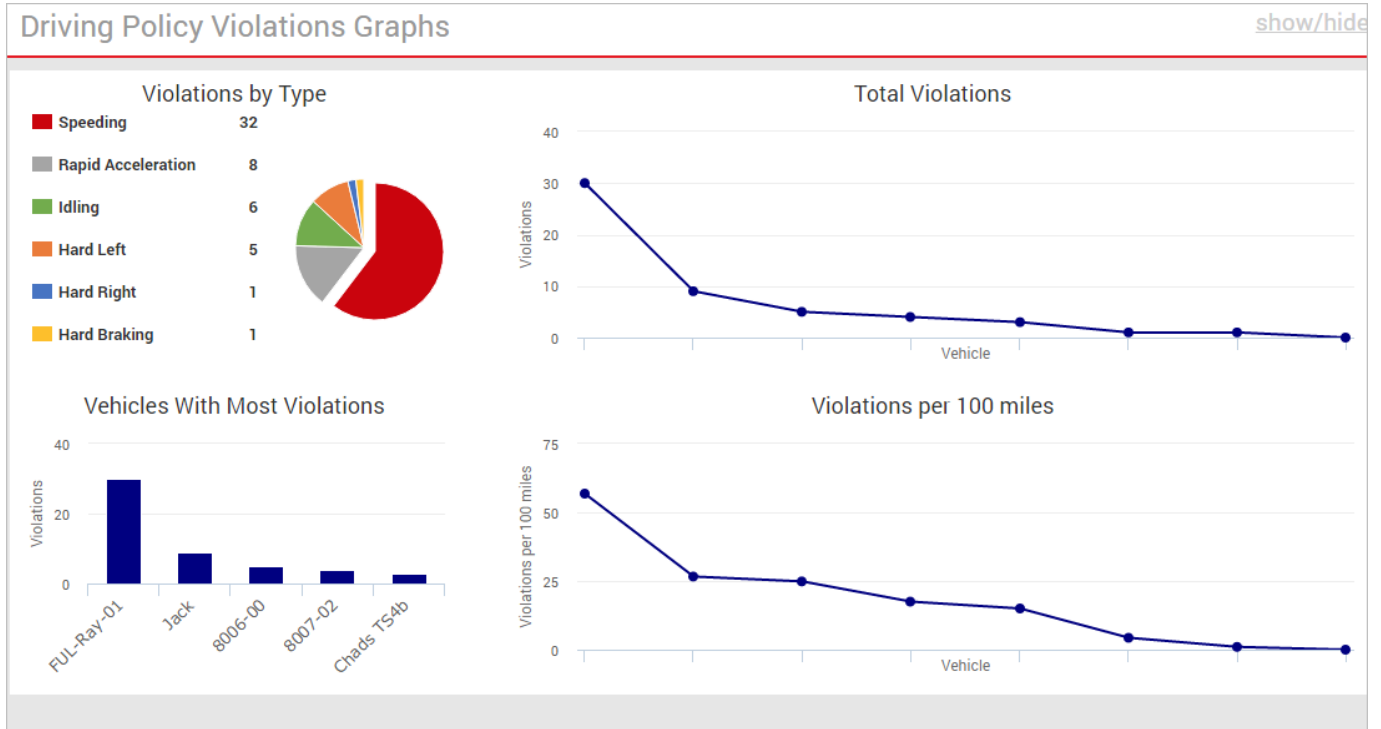


Note. *The Detail Report provides information on violations from all supported devices, whereas the Summary provides data only on buzzer-enabled devices. The Driver column is available for **Pro/Enterprise** versions.

Product Features and Updates - 2/6/2017

Feature Updates

Link: <https://help.gpsinsight.com/product-features-and-updates-262017-s/> Last Updated: February 15th, 2017



Driving Policy Violations Summary Report »

Driving Policy Violations Summary Report

Vehicle	Driver	Distance	Violations per 100 miles	Hard Braking	Hard Left	Hard Right	Idling	Rapid Acceleration	Speeding	Total
8006-00	not set	28.6 mi.	17.48	1	2	0	2	0	0	5
8006-01	not set	79.0 mi.	0.00	0	0	0	0	0	0	0

Administrative Features

Hours of Service - Multi Organizational (MultiOrg) Support

The GPS **Hours of Service** portal integration with the **ISE portal** now allows a one-to-many association with ISE eFleetSuite organizations, which accommodates an organization with a parent company and multiple subsidiaries.

Hours of Service - New Messaging App

ELD messaging is integrated with the portal. This feature is available to **drivers who interact with the in-cab tablet display** as well as **dispatchers who interact with the GPS portal**.

Product Features and Updates - 2/6/2017

Feature Updates

Link: <https://help.gpsinsight.com/product-features-and-updates-262017-s/> Last Updated: February 15th, 2017

