

# Product Features and Updates - 12/31/2015

## Feature Updates

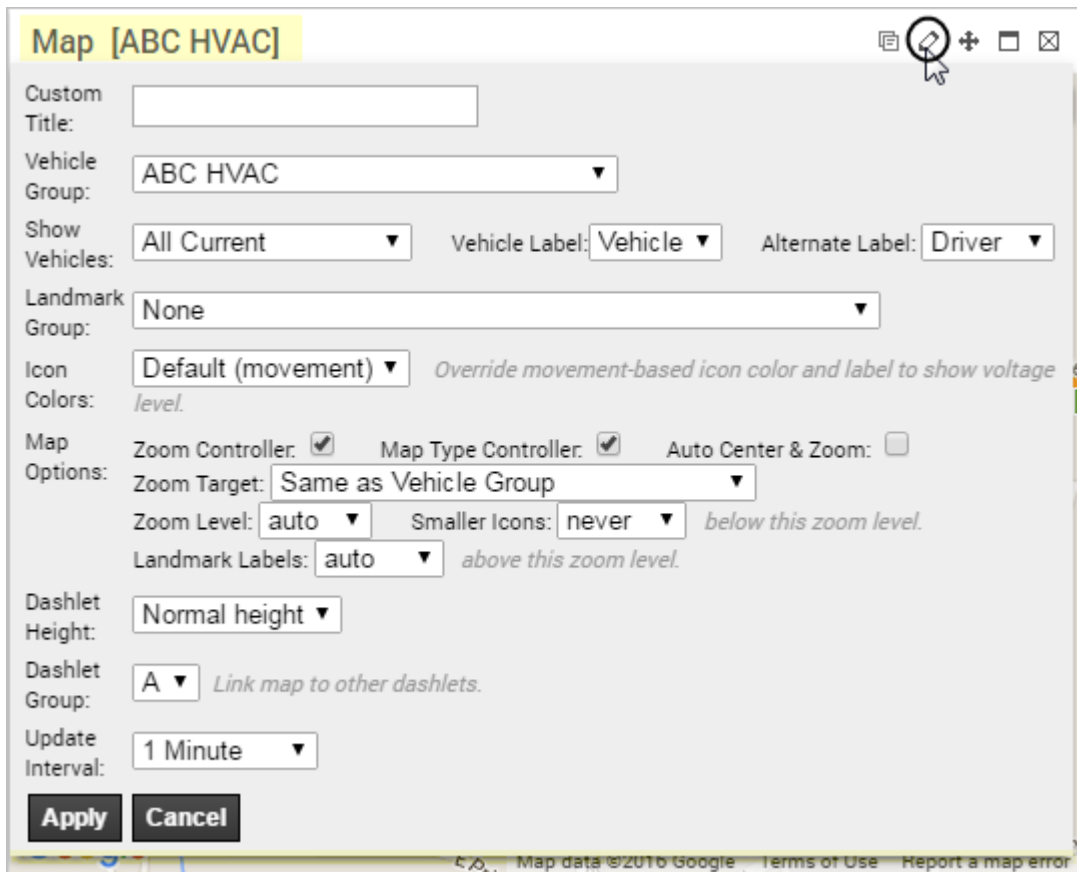
Link: <https://help.gpsinsight.com/product-features-and-updates-12312015/> Last Updated: July 26th, 2016

This Product Features and Updates announcement for GPS Insight **Pro/Enterprise** includes additions to the dashboard, reports, alerts, and administrative functions.

## Dashboard Updates

### Dashlets - Updated User Interface

Dashlet Title Bars are a little bigger, and the text is dark gray. The Pencil Icon now pops the Edit Menu OVER the associated dashlet and includes 3D border shading. The Menu Pane no longer pushes the dashlet down; it appears over the dashlet.

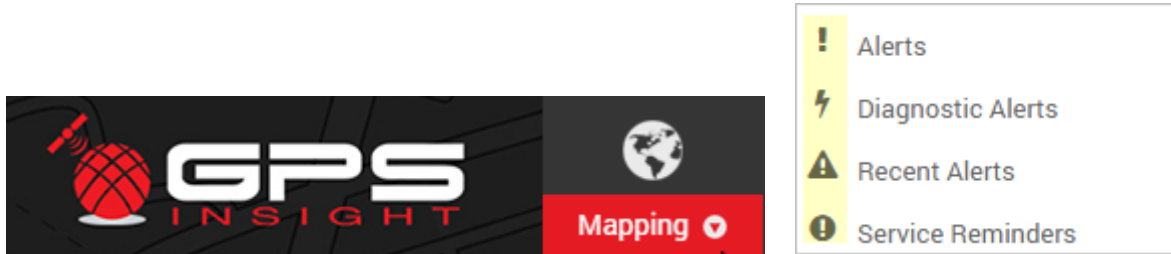


Gradient colors are also now solid for a cleaner, more modern look. Dashlet Icons have been updated to bring uniformity to all platforms:

# Product Features and Updates - 12/31/2015

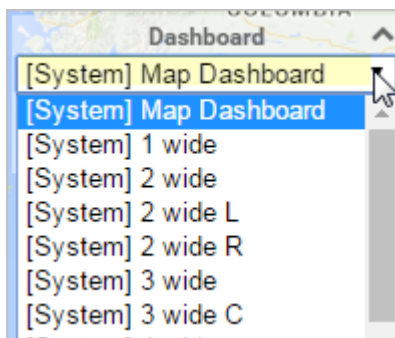
## Feature Updates

Link: <https://help.gpsinsight.com/product-features-and-updates-12312015/> Last Updated: July 26th, 2016

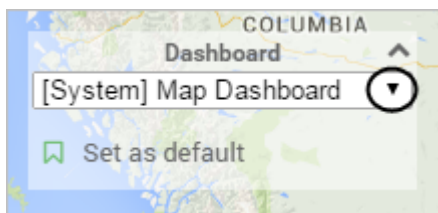


## Dashlets - New Map Dashboard

An entirely new dashboard is available: **Map Dashboard**. (It has the same look and feel of the Standard interface product.)



To return and/or navigate to other dashboards, expand and select from the drop-down menu:



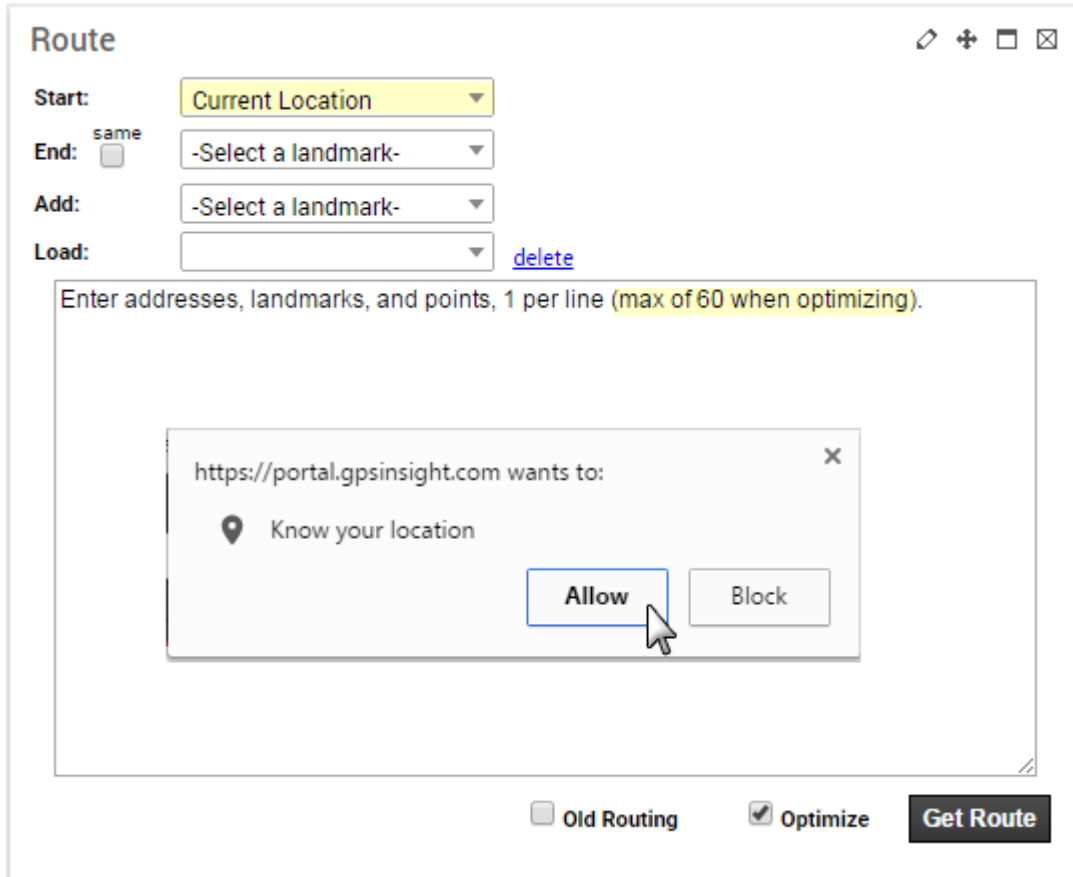
## Route Dashlet - New Options

Within the **Route dashlet**, the stop location maximum has been raised from 30 to 60. Additionally, you can start/end/add your (computer's) current location. You must allow your computer's location to be known via a browser pop-up.

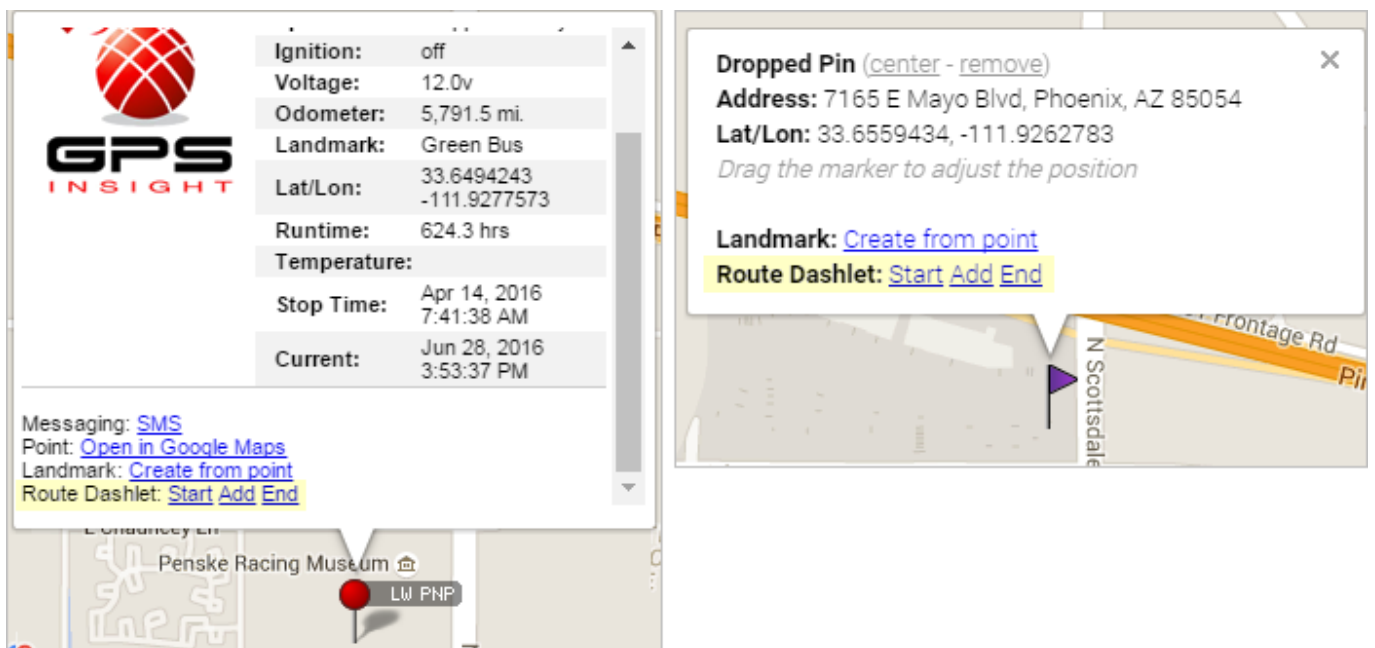
# Product Features and Updates - 12/31/2015

## Feature Updates

Link: <https://help.gpsinsight.com/product-features-and-updates-12312015/> Last Updated: July 26th, 2016



Additionally, Vehicle Information and Dropped Pin pop-ups will now interact with the Route dashlet, creating and adding points as desired. These options will not display unless the **Route dashlet** is open on the dashboard.



# Product Features and Updates - 12/31/2015

## Feature Updates

Link: <https://help.gpsinsight.com/product-features-and-updates-12312015/> Last Updated: July 26th, 2016

### Report Updates

#### Performance Report - Updated Icon

The **Performance Report** has a new information icon that will display how many times an asset has reported in the last 7 days. This icon enables you to ensure assets (that report infrequently) are reporting at the correct interval w/out having to run individual ADRs.

| Performance Report » |                   |              |                                                              |             |     |         |              |                             |  |  |
|----------------------|-------------------|--------------|--------------------------------------------------------------|-------------|-----|---------|--------------|-----------------------------|--|--|
| Performance Report   |                   |              |                                                              |             |     |         |              |                             |  |  |
| Vehicle              | VIN               | Serial #     | Count of GPS points                                          |             |     |         | Stopped      | Stopped                     |  |  |
| 4225 HD TEST         | 4B4K21C29883      | 4B4K21C29883 | Report count: 28<br><i>* number is based off last 7 days</i> |             |     |         |              | Out of Range 3-4 days       |  |  |
| AG                   | 0                 | 215334180    | not set                                                      | 0 mi.       | On  | 6.4v    | 1 hour ago   | 1 hour ago                  |  |  |
| AL 3500              | WLSL5N13MVE74176  | 3500057814   | not set                                                      | 247,621 mi. | On  | no data | 10 hours ago | Out of Range 10 hrs, 15 min |  |  |
| AL Bench Test Device | 0                 | 4641163952   | not set                                                      | 1 mi.       | Off | no data | May 9        | May 3                       |  |  |
| AL Cavalier 3900e    | WJLJ5246127400046 | 4641293537   | not set                                                      | 2,155 mi.   | Off | 13.3v   | 10 hours ago | 10 hours ago                |  |  |
| AL Dodge 3900i       | WPCXG5848ER234843 | 4641214650   | not set                                                      | 34,651 mi.  | Off | no data | 4 hours ago  | 4 hours ago                 |  |  |

#### Report Locations - Improved Reverse Geo-Coding

Lat/Long points that used to produce “Address not found” messages will now pass through three look-up databases: Navteq, Tom-Tom, and lastly Google. Google will, at a minimum, produce an approximate address.

# Product Features and Updates - 12/31/2015

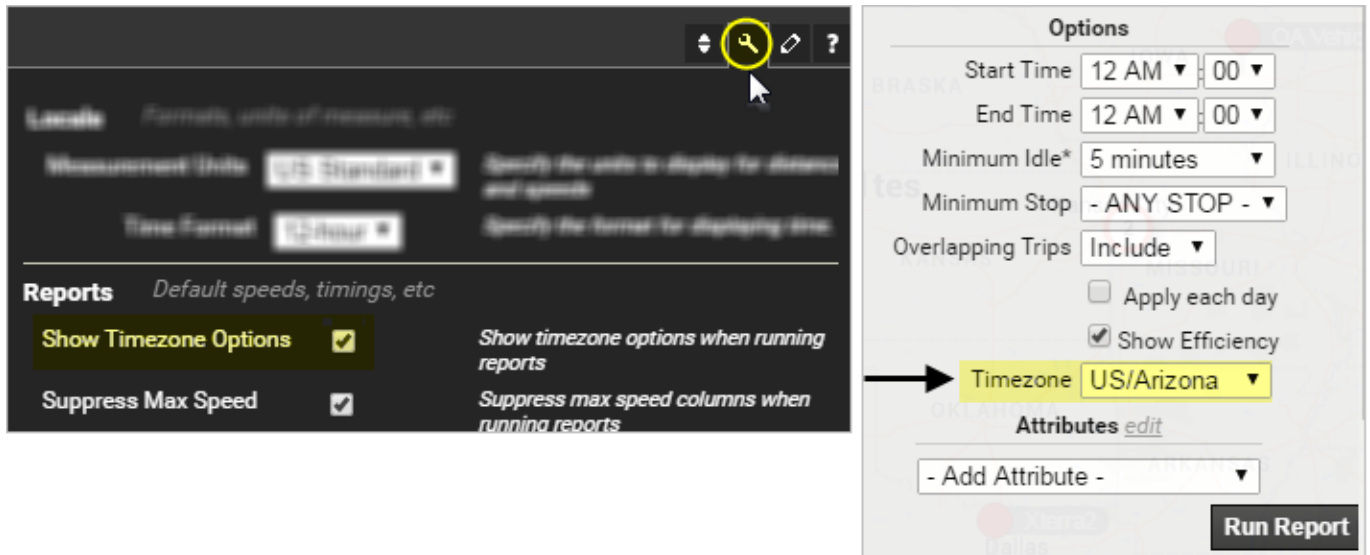
## Feature Updates

Link: <https://help.gpsinsight.com/product-features-and-updates-12312015/> Last Updated: July 26th, 2016

| Activity Detail Report »         |         |          |          |            |                                                    |
|----------------------------------|---------|----------|----------|------------|----------------------------------------------------|
| Selected Vehicle: AL Dodge 3900i |         |          |          |            |                                                    |
| Sat Jun 25, 2016                 |         |          |          |            |                                                    |
| Time                             | Driver  | Ignition | Latitude | Longitude  | Location                                           |
| 6:52:40 PM                       | not set | On       | 33.72281 | -112.11876 | S I-17, Phoenix, AZ                                |
| 6:54:40 PM                       | not set | On       | 33.48752 | -112.11428 | 22918 N Black Canyon Hwy, Phoenix, AZ              |
| 6:56:40 PM                       | not set | On       | 33.48876 | -112.11438 | 22086 N Black Canyon Hwy, Phoenix, AZ              |
| 6:57:12 PM                       | not set | Off      | 33.48844 | -112.11281 | 22230 North Black Canyon Highway, Phoenix, Arizona |

## Stop Detail and Idle Time Report - New Option

If the “**Show Timezone Options**” box is checked on the User Preferences page, Timezone will now be an option on the **Stop Detail and Idle Time** report.



The image shows two screenshots from a web application. The left screenshot shows the 'Reports' section of the 'User Preferences' page. The 'Show Timezone Options' checkbox is checked, and the 'Suppress Max Speed' checkbox is also checked. The right screenshot shows the 'Options' section of a report configuration page. The 'Timezone' dropdown menu is set to 'US/Arizona'.

This option has been available on many **other reports** for some time.

## Alert Updates

## Alerts - Updated UI

Alerts are now in alphabetical order. Simple but handy!

# Product Features and Updates - 12/31/2015

## Feature Updates

Link: <https://help.gpsinsight.com/product-features-and-updates-12312015/> Last Updated: July 26th, 2016

| Alerts List                     |                                                              |
|---------------------------------|--------------------------------------------------------------|
| <b>Accel Alert +</b>            | Alert when a vehicle violates the specified accel threshold. |
| <b>Decel Alert +</b>            | Alert when a vehicle violates the specified decel threshold. |
| <b>Driver Assign Alert +</b>    | Alert when a driver is assigned to a vehicle.                |
| <b>Driver Login Alert +</b>     | Alert when a driver does not log in when starting a trip.    |
| <b>DTC Alert +</b>              | Alert on Diagnostic Trouble Codes (supported devices).       |
| <b>DVIR Alert +</b>             | Alert when a DVIR with Defects is received.                  |
| <b>Garmin Queue Alert +</b>     | Alert when garmins reach a specified queue depth.            |
| <b>Heartbeat Alert +</b>        | Alert when a heartbeat is received (usually once a day).     |
| <b>Hours of Service Alert +</b> | Alert when specified hours of service limit is reached.      |
| <b>Idle Time Alert +</b>        | Alert when a vehicle idles more than the specified limit.    |

## Alerts - Updated Processing

New methods of processing normal alert data now allows alerts to be more “real-time.” These alert conditions will not interrupt (i.e. 2-min) programmed update interval schedules. GPS Insight server design and updated algorithms will, however, now send the alerts almost instantaneously. Device level alerts (Voltage, DTC, etc.) are still sent as conditions are met.

## New Alerts - Acel, Decel, and Hours of Service

- **Accel** - when a vehicle violates a specified **acceleration threshold**.
- **Decel** - when a vehicle violates a specified **deceleration threshold**.
- **Hours of Service** - when a specified hours of **service limit** is met.

## Administrative Updates

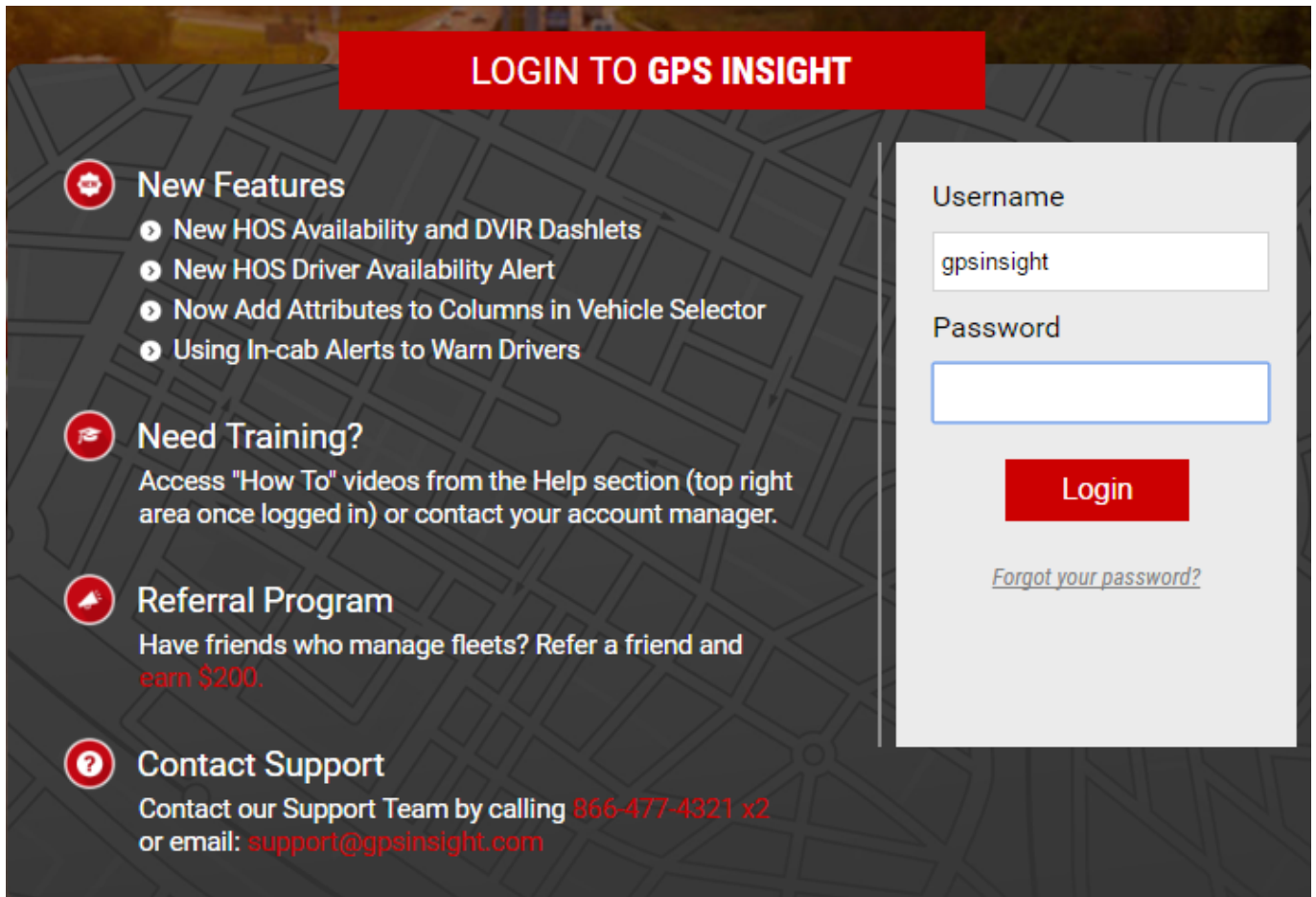
# Product Features and Updates - 12/31/2015

## Feature Updates

Link: <https://help.gpsinsight.com/product-features-and-updates-12312015/> Last Updated: July 26th, 2016

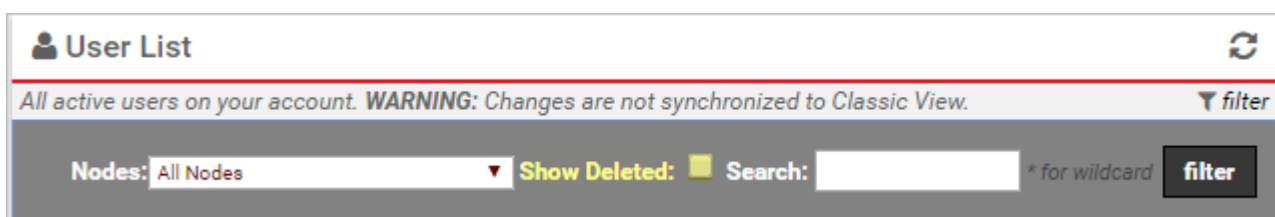
## New Login Page

GPS Insight has a New Login Page. The page features many direct links to other areas of the website, such as blog articles, referral program, Support contact info, password reset, etc.



## Manage Users and Groups - New Options

The **Manage Users and Groups** page includes a **Show Deleted** option in the **filter list**.



If Hierarchy column is available (Enterprise customers), it displays previously associated nodes. Users can be “un-deleted” from the **Edit User Details window** (✎) pencil icon for the associated user and selecting the UN-DELETE check box.

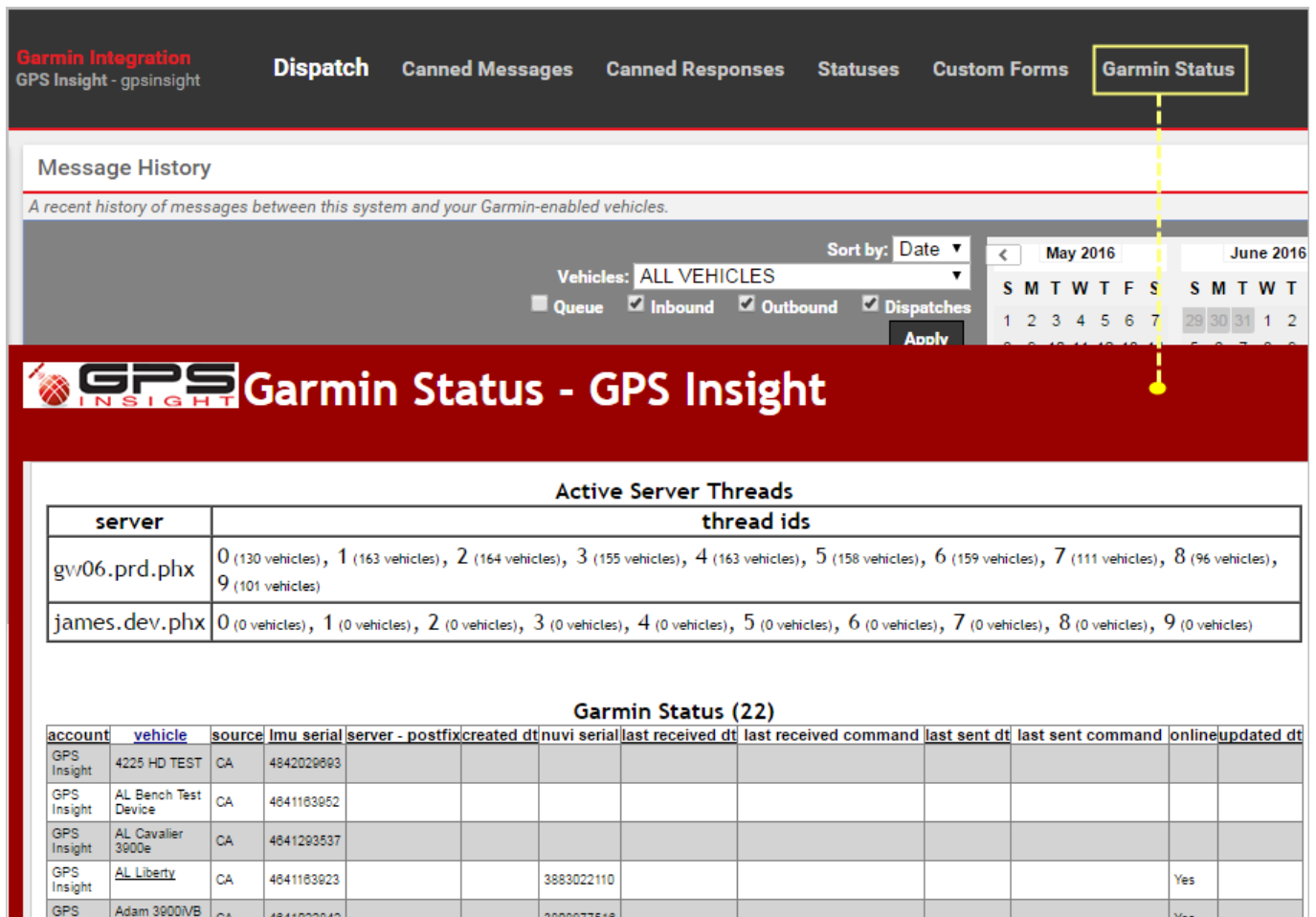
# Product Features and Updates - 12/31/2015

## Feature Updates

Link: <https://help.gpsinsight.com/product-features-and-updates-12312015/> Last Updated: July 26th, 2016

## Garmin Integration - New Administrative Option

Customers who are Garmin “power-users” now have the ability to access the de-bugging page directly. This feature is permission-based; request from [Support](#) if needed.



**Garmin Status - GPS Insight**

| server        | thread ids                                                                                                                                                                        |
|---------------|-----------------------------------------------------------------------------------------------------------------------------------------------------------------------------------|
| gw06.prd.phx  | 0 (130 vehicles), 1 (163 vehicles), 2 (164 vehicles), 3 (155 vehicles), 4 (163 vehicles), 5 (158 vehicles), 6 (159 vehicles), 7 (111 vehicles), 8 (96 vehicles), 9 (101 vehicles) |
| james.dev.phx | 0 (0 vehicles), 1 (0 vehicles), 2 (0 vehicles), 3 (0 vehicles), 4 (0 vehicles), 5 (0 vehicles), 6 (0 vehicles), 7 (0 vehicles), 8 (0 vehicles), 9 (0 vehicles)                    |

| account     | vehicle              | source | imu serial | server - postfix | created dt | nuvi serial | last received dt | last received command | last sent dt | last sent command | online | updated dt |
|-------------|----------------------|--------|------------|------------------|------------|-------------|------------------|-----------------------|--------------|-------------------|--------|------------|
| GPS Insight | 4225 HD TEST         | CA     | 4842029893 |                  |            |             |                  |                       |              |                   |        |            |
| GPS Insight | AL Bench Test Device | CA     | 4841183952 |                  |            |             |                  |                       |              |                   |        |            |
| GPS Insight | AL Cavalier 3900e    | CA     | 4841293537 |                  |            |             |                  |                       |              |                   |        |            |
| GPS Insight | AL Liberty           | CA     | 4841183923 |                  |            | 3883022110  |                  |                       |              |                   | Yes    |            |
| GPS         | Adam 3900MB          | CA     | 4841293537 |                  |            | 3883022110  |                  |                       |              |                   | Yes    |            |

## Attributes - Sortable

Attributes, as they apply to a hierarchy, can now be sorted by hierarchical view or in alphabetical order.



# Product Features and Updates - 12/31/2015

## Feature Updates

Link: <https://help.gpsinsight.com/product-features-and-updates-12312015/> Last Updated: July 26th, 2016

### Assign Hierarchy Node Attributes: Invoice

Assign values (integer) to hierarchy for the Invoice attribute.

Hierarchy Tree:  Node(optional):   Alphabetical Order  Hierarchical View

| Hierarchy Node | Invoice |
|----------------|---------|
| Company XYZ    |         |
| -Arizona       |         |
| --Brainard     |         |
| --Chandler     |         |
| --Globe        |         |
| --Mankato      |         |
| --Mesa         |         |
| --Minneapolis  |         |
| --Minnesota    |         |
| --Phoenix      |         |
| --Roseville    |         |
| --Scottsdale   |         |
| --St. Cloud    |         |
| --Waseca       |         |
| --Williamson   |         |

Download: [Excel](#), [CSV](#) Enter values for each Hierarchy Node in the 'Invoice' column

## Webhooks - New Options

There are two new turnkey **API Webhook Integrations**: Fleet Mgmt Software, Fleetio Odometer and Fleetio DTC. An API Key and Account ID are required. Some unknown DTC codes will have descriptions only. For example: FMI:31,OC:127,SPN:524287 FMI=Failure Mode Identifier / OC=Occurrence Count / SPN=Suspect Parameter Number.