

## Before You Begin

The installation kit contains: Rugged protective case, Android Rhino T80 (tablet), charger cable (12v accessory socket), one Dock Mount (incl. backing plate and applicable hardware), and installation guide.

**Note.** This tablet is designed to operate safely within a temperature range of **0°C to 40°C (32°F to 104°F)**.

> Using the device outside this range may result in reduced performance, automatic shutdown, or damage.

> Avoid exposing the tablet to direct sunlight, heaters, or enclosed spaces (like inside a car on a hot day).

> Warranty service may be denied if inspection reveals damage consistent with thermal stress or operation outside specified environmental conditions.

If the device overheats, it may automatically dim the screen, reduce performance, or shut down to protect internal components. For optimal performance and safety, keep the tablet in a well-ventilated area and out of extreme heat or cold.



Rhino T80 Tablet



Tablet Mount



Protective Case

Additional tools that you may need include: a pen, dash panel removers, cordless drill and 5/8-in. (16 mm.) drill bit and/ or Philips screwdriver.

## Installation Overview

The following steps provide an overview of the installation process:

1. Tablet Mount Installation.
2. Assembling Mount.
3. Installing Protective Case.

## 4. Installing Tablet in Mount.

## Installation Steps

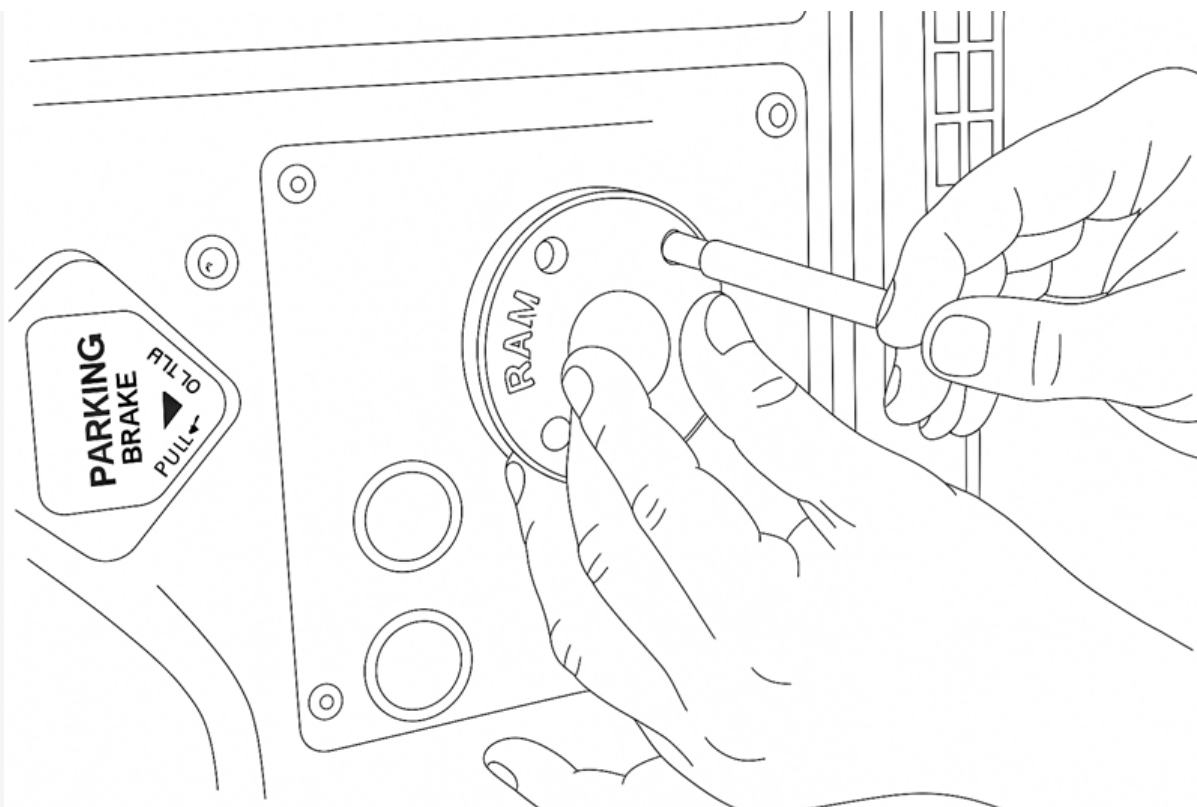
### 1. Tablet Mount Installation.

Locate the Tablet Mount, backing plate kit with screws, 5/8 in. (16 mm) and 3/16 in. (5 mm) drill bit, cordless drill, and fine tip pen.

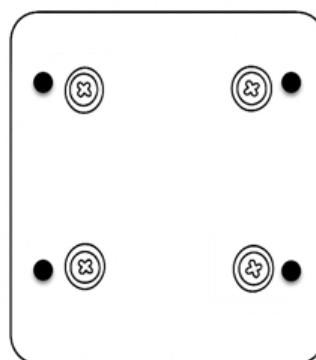
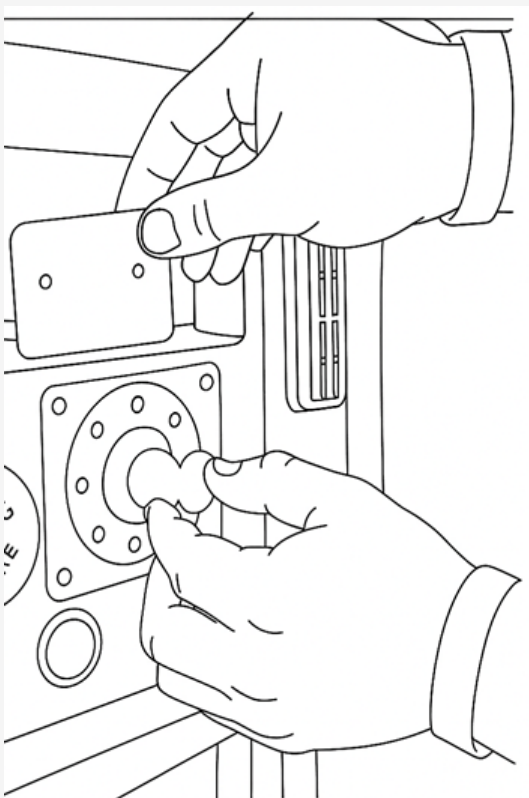
- When determining the mounting location, keep in mind the size of the Rhino T80 (tablet) 8" screen and power source (USBC Charger) location in vehicle. The location of the Rhino T80 (tablet) must be within reaching distance of the driver while seated and NO part of the tablet should be above the top of the dashboard or obstruct usage of any gauges or switches.

1. Separate the mount base by loosening the tightening screw in the middle of the arm.
2. Using the mount base and backing plate, identify the holes by lining up the two before marking the holes needed to secure the mount to the dashboard.

**Note.** Before you continue, verify there are no wires, air lines, or anything else behind the mounting location that might be damaged by the drill bit.



3. Drill out the four holes marked in the previous step with the 3/16-in. (5 mm.) drill bit and then line up the base of the Dock Mount with the backing plate and secure it to the dashboard using the four nuts and bolts included in your kit. (items may be slightly different than ones pictured below).



**Note.** The backing plate is required for every install. If you are unable to use the backing plate without significant modifications, consult with your project coordinator. Do not secure the mount to the dashboard with self-tapping screws.

4. Locate the mount arm and loosen the knob to partially release the spring. Place one ball joint in one of the arm's sockets, and the other ball joint in the other arm socket. Adjust the positioning of the MDT dock to the desired position as you tighten the mount arm.

## 2. Assembling Mount.



1. Insert ball (#2) into slots on mount frame (#1).
2. Insert ball (#2) into mount arm (#3).
3. Insert bracket ball (#4) into mount arm (#3).
4. Tighten mount arm (#3) in a clockwise direction.



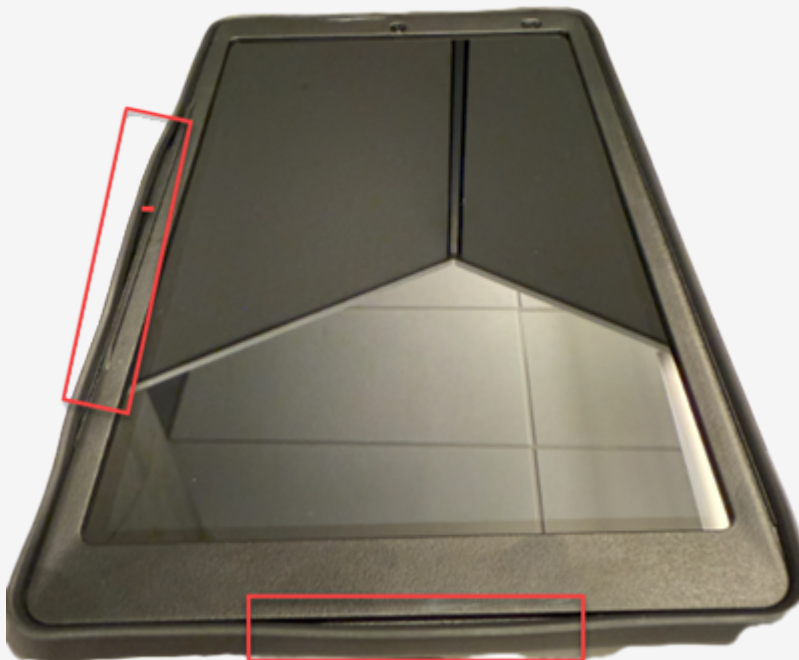
### 3. Installing a Protective Case.



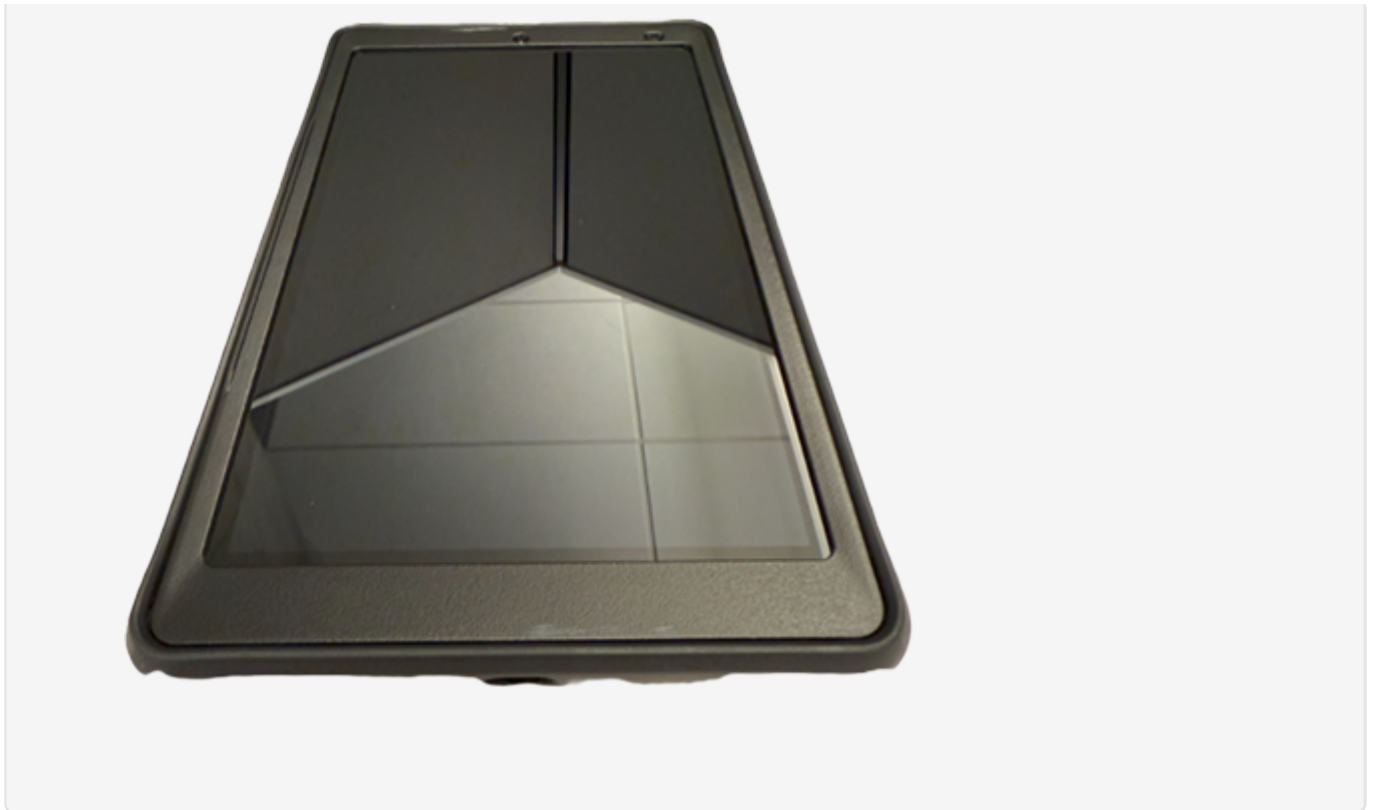
1. Prepare the tablet by ensuring the Rhino T80 tablet is powered off and disconnected from any charging cables or accessories.
2. Place the front part of the case on top of the tablet and then press down on the opposite side to secure the tablet in place.



3. Gently smooth the rubber moulding around case.



4. Ensure all edges and corners of the tablet are snugly fitted within the case, providing complete protection.



## 4. Installing Tablet in Mount.

1. Push down on lever on back side of tablet mount (this will adjust the width).
2. Secure the tablet snugly and release the lever.



3. Pulling out or pushing in on the tablet face arms will secure the tablet in place.

# Accessory: Rhino T80 Tablet

Link: <https://help.gpsinsight.com/installation-guide/accessory-rhino-t80-tablet/> Last Updated: April 28th, 2025

