

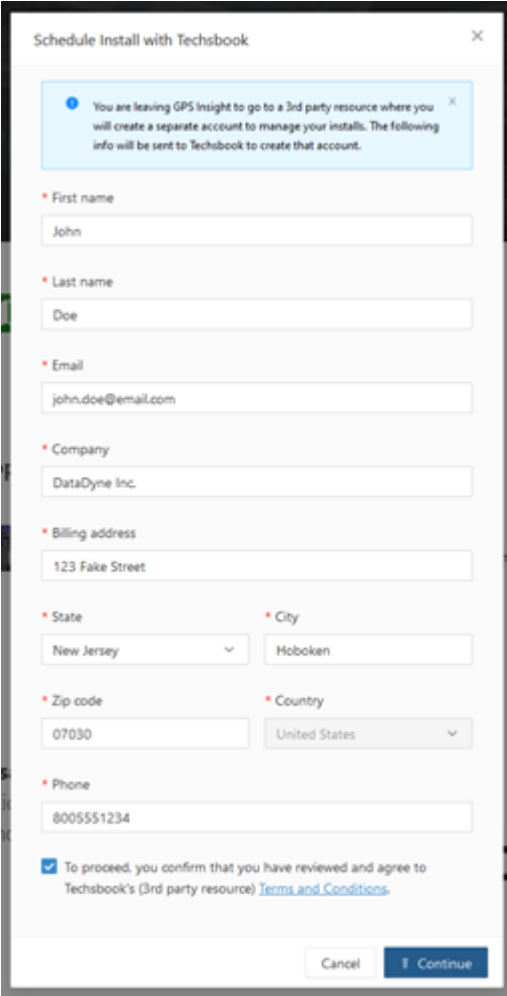
Feature/Functionality Changes & Updates

Map Page

- **Addresses & Posted Speed:** Updated our geocoder to better deliver accurate address and posted speed information in reports, alerts, and on the map.

Explore Page

- **Techsbook:** A new pop-up form appears after clicking “Schedule an Install” from the Explore page of the GPS Fleet Tracking Portal. This pop-up form is pre-populated with information from the customer’s account (first name, last name, email, company name, company address, and phone number). The customer can review and/or update information passed on to Techsbook in the form before continuing to the Techsbook site to schedule the installation. In addition, we are now leveraging a new API endpoint to increase the accuracy of submitted customer information via the form.



Screenshot of the "Schedule Install with Techsbook" pop-up form. The form contains the following fields and information:

- Message:** "You are leaving GPS Insight to go to a 3rd party resource where you will create a separate account to manage your installs. The following info will be sent to Techsbook to create that account."
- First name:** John
- Last name:** Doe
- Email:** john.doe@email.com
- Company:** DataDyne Inc.
- Billing address:** 123 Fake Street
- State:** New Jersey
- City:** Hoboken
- Zip code:** 07030
- Country:** United States
- Phone:** 8005551234
- Agreement:** To proceed, you confirm that you have reviewed and agree to Techsbook's (3rd party resource) [Terms and Conditions](#).
- Buttons:** Cancel, Continue

Note. This form assists the auto-login process for returning customers to Techsbook.

Admin Page (Standard and Fleet Plans)

- **Editing a User:** A Driver Groups Access field is now available when editing a user to allow specific driver group permissions to be applied to a new or existing user, improving driver visibility and Admin user efficiency.

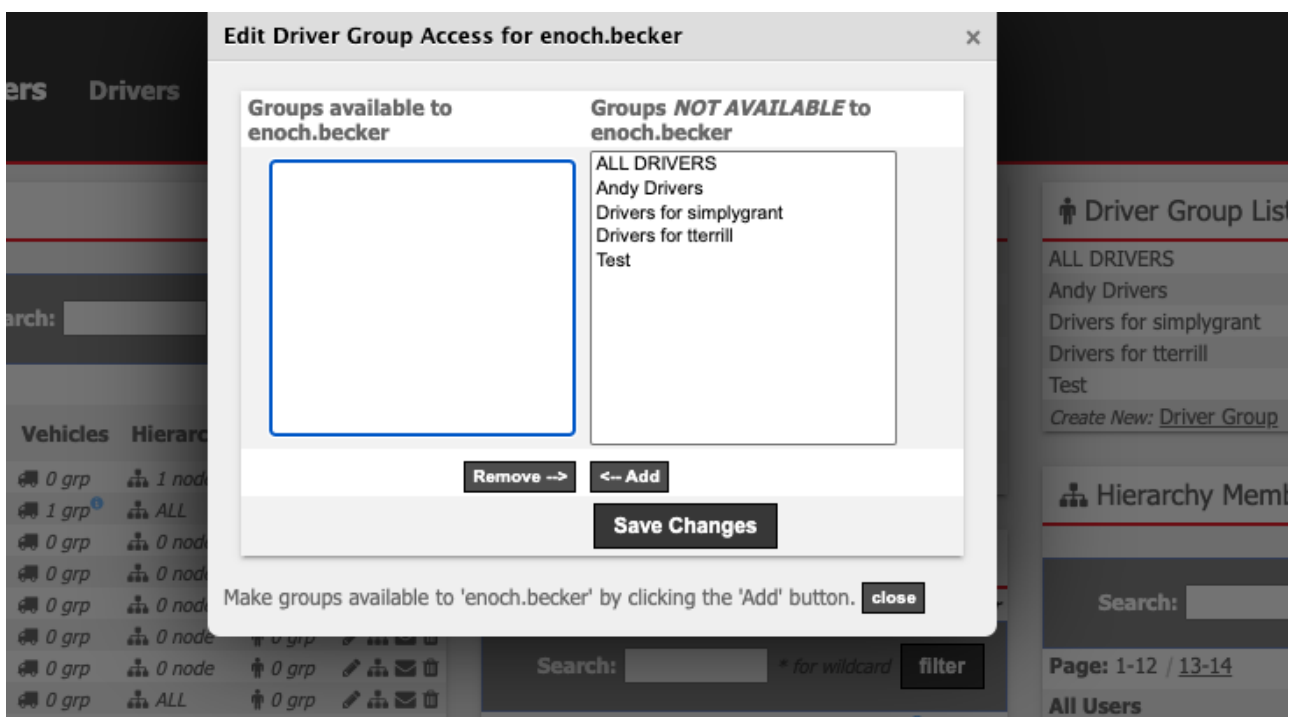
Reports Page

- **Reports (Advanced Admin/Enterprise):** You can now choose which report format (CSV, XSL, HTM) you want to receive when scheduling a report.

Note. This feature is coming soon for Standard/Fleet plans also.

Classic Portal

- **Editing a User:** A Driver Groups Access field is now available when editing a user to allow specific driver group permissions to be applied to a new or existing user, improving driver visibility and Admin user efficiency.



- **Schedule an Install:** Clicking the “Schedule an Install” link in Classic Portal now opens the new pop-up form in the new Portal.

Hardware Updates

- **AIR II:** Approved most recent firmware for future use to maintain feature functionality and stability.
- **D-215:** Completed updates across all deployed devices that improves upon VLS and camera obstruction reporting.

Driveri Updates

- **Reports Central - Driver & User Activity Report:** A new report named Driver & User Activity has been introduced in Reports Central. This report provides in-depth information about user and driver activities on the Driveri Portal and Driveri App, respectively. It features two tabs: User Activity (Portal) and Driver Activity (App). The information in this report assists in monitoring user and driver engagement and activity, allowing fleet managers to gain better control over operations by understanding who is engaged, when they're active, and what actions they're taking within the system. For more info: [Driver User Activity Report](#)
- **Driveri D-450:** The Driveri D-450 camera offers four HD 1080p cameras providing a 360° picture of driver behavior providing added capabilities such as:
 - Forward Collision Warning (FCW)
 - Advanced Drowsiness

Click Here for More Info: [Driveri D-450](#)

- **Introduction of Alert Geofence:** Alert Geofence is now available as a new tab on the side menu of the Driveri Portal. This feature allows you to suppress alerts based on specific geographic locations, thereby reducing distractions. You can select either a circular or polygonal option to create a geofence.
- **Enhancements to Severe Drowsy Alerts:** Severe Drowsy alerts are now available on D-210 and D-215 product lines. These Severe Drowsy alerts are based on a more advanced machine learning model that looks at features of the drivers' eyes and face to determine if they are drowsy, more than just excessive yawning. There has been an enhancement rolled out in the last month to the machine learning model that detects Driver Drowsiness. This enhancement greatly reduced the number of false positives, allowing drivers and safety managers to focus on relevant instances of Drowsiness. This enhancement has been rolled out to all our product lines which support Drowsy detection (D-430, D-450, D-210, D-215).
- **Enhancements to Driver Assignment Page:** The Assign & Associate tab in the Driver Assignment page has a new look and feel. The filters on this page are also updated to better reflect the segments containing unassigned drive time rather than those containing no drive time. Both the Assign & Associate and the Driver Login Details tabs have been optimized to allow for choosing multiple trips to assign to a single driver, so that this manual assignment becomes more streamlined for Fleets.

Bugs Squashed

Map Page

- Manually assigning a driver to a vehicle is now hassle-free! Driver assignment functionality has been improved to ensure a smooth and reliable assignment process
- Creating new landmarks is now more intuitive! The process has been enhanced to prevent unnecessary error messages when a landmark group isn't manually selected, ensuring a smoother experience
- Driver reassignments made in the Classic Portal now update promptly in the new Portal, ensuring data stays consistent and actions are reflected instantly across both platforms

Reports Page

- When running, emailing or scheduling a report back further than 5 months, if 31 days are in the month(s) selected, you will now receive the full 31 days of data in the report, where previously months were cut off at 30 days
- State Mileage Report: State Mileage Report emails successfully without timing out.

Alerts Page

- You can now edit alerts seamlessly without any interruptions to ensure smooth and efficient alert customization