

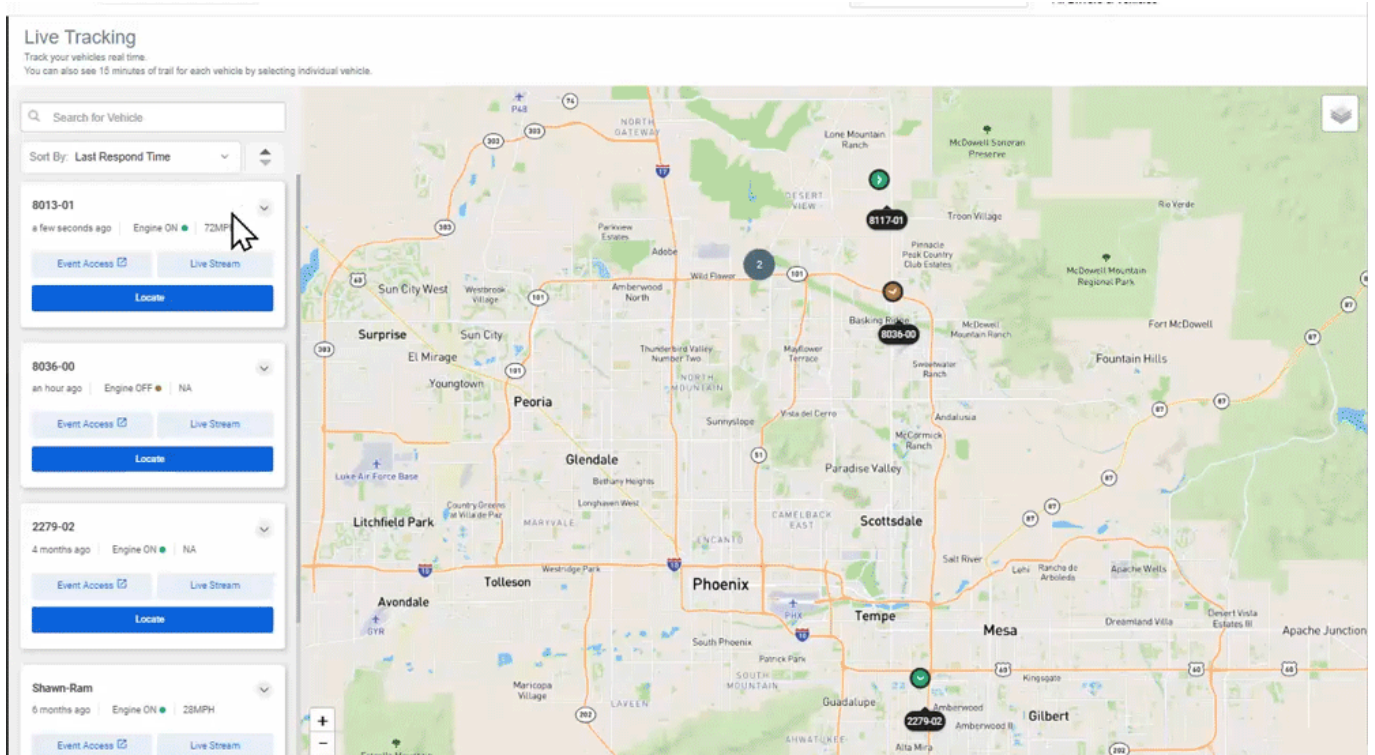
Link: <https://help.gpsinsight.com/driveri-release-11-14-2022/> Last Updated: November 8th, 2022

The following release for Driveri is available to all Driveri customers now.

Feature Update – New Live Stream Add-On

Introducing Live Stream

Live Streaming is an add-on feature available at an additional cost with Driveri. This feature allows a user with the appropriate permissions to request Live Streaming sessions (available in 1-minute increments) to a vehicle’s inward-facing or outward-facing camera (depending on selection). When enabled, this feature is accessible via the Live Tracking page of the Driveri Portal.



Please see [About Driveri Live Stream](#) for additional information.