

The Driver Sync toggle automates a sync of driver information from the GPS Fleet Tracking Portal to the Driveri Portal. This automation ensures the creation, update, and deletion of driver profiles match across both platforms, enhancing efficiency and ensuring data consistency.

How It Works

- **Automatic Synchronization:** Whenever a driver profile is created or updated in the GPS Fleet Tracking Portal, the changes are automatically reflected in the Driveri platform. Similarly, if a driver profile is deleted from the GPS Fleet Tracking Portal, it will also be removed from Driveri.
- **Real-Time Updates:** Changes in the GPS Fleet Tracking Portal are immediately synchronized with Driveri, thanks to real-time update mechanisms. This ensures that all data across platforms is current and accurate.
- **Opt-In Control:** You control this synchronization via an “Opt-In” toggle located in the GPS Fleet Tracking Portal Classic Portal from the “Vehicle and Driver Integration” page.

Note. If you are a Standard tier customer, please contact your Account Manager if you are interested in enabling this automated sync.

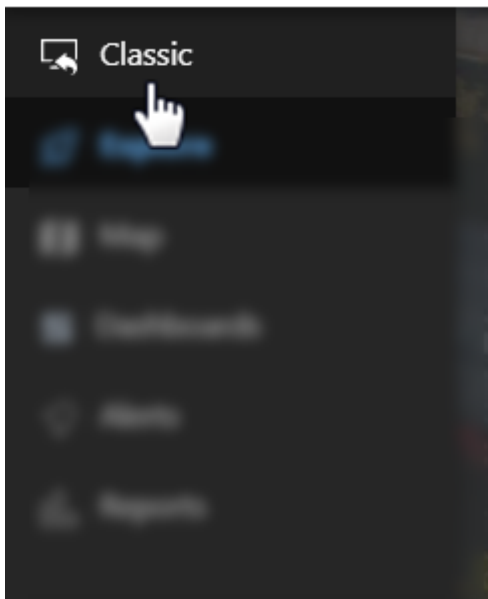
Toggle On Driver Sync

Note. Only the Master User of the account has the ability to enable Driver Sync.

How to turn on Driver Sync:

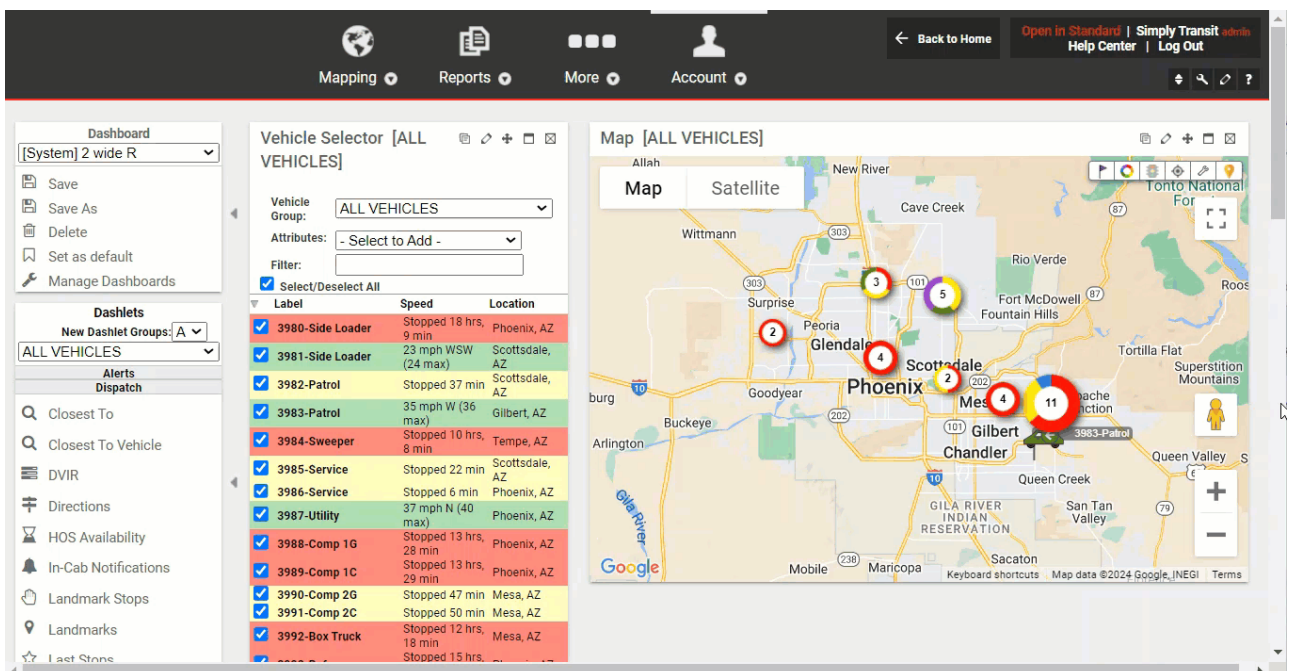
1. From the GPS Fleet Tracking Portal Explore page, click Classic icon in the upper left corner.

Link: <https://help.gpsinsight.com/docs/driveri-automated-driver-sync/> Last Updated: May 21st, 2024



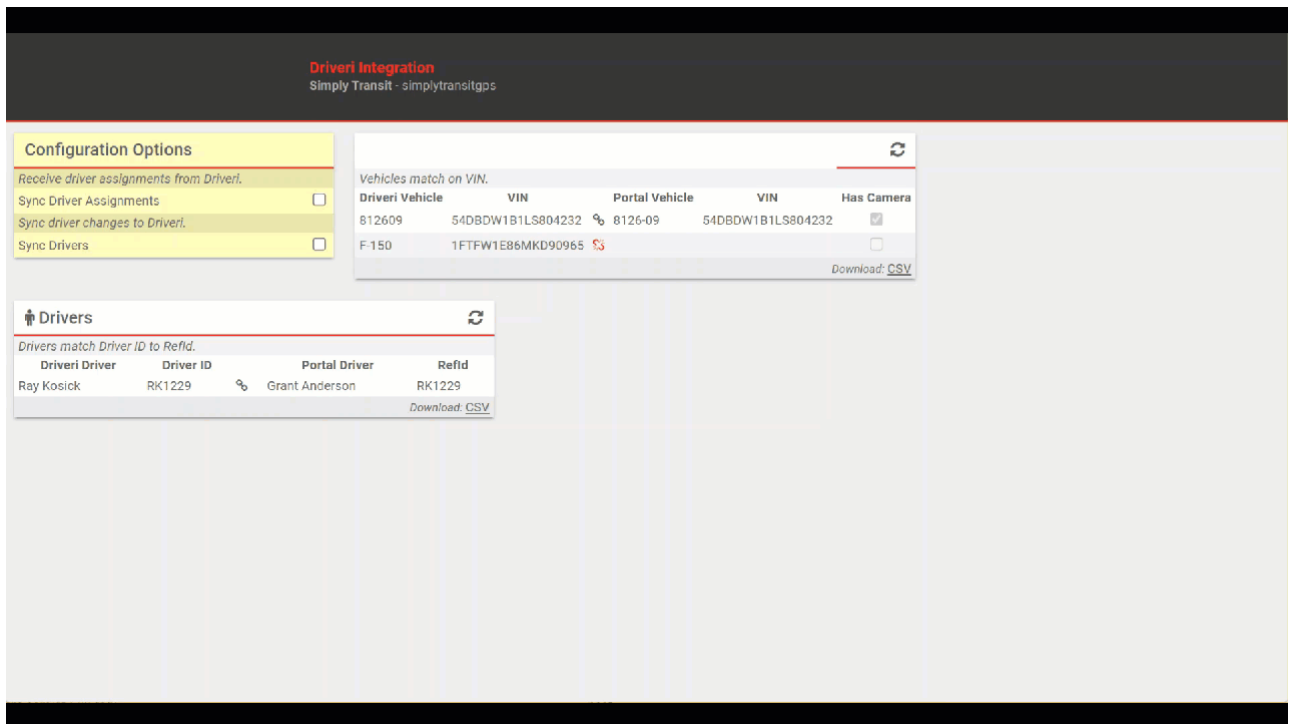
The Classic Portal page appears.

2. Hover your mouse over **More**, then under Cameras, click **Driveri Cameras**.
3. Click **Vehicle and Driveri Integration**.



The Driveri Integration page opens in a separate tab.

4. In the Configuration Options section, check the box next to **Sync Drivers**.



The automated Driveri Sync option is now enabled. Any changes made to drivers in the GPS Fleet Tracking Portal will automatically sync to the Driveri Portal without requiring any manual intervention.

Note. Driver information in the GPS Fleet Tracking Portal is “the source of truth;” any changes made to drivers in the Driveri Portal will not be reflected in the GPS Fleet Tracking Portal and may be overridden by driver information from the GPS Fleet Tracking Portal when the automation event occurs (daily occurrence).

Driveri DriverID Field

When creating a new driver from the Admin: Drivers page in the GPS Tracking Portal, the Driveri DriverID field is the primary identifier between the GPS Fleet Tracking Portal and Driveri platforms. If the Driveri DriverID field is changed to a value that doesn't exist in Driveri, the system sync will update the linked Driveri driver's DriverID. If the DriverID already existed in Driveri, the Portal driver is linked to the Driveri driver with the corresponding existing DriverID profile.

Link: <https://help.gpsinsight.com/docs/driveri-automated-driver-sync/> Last Updated: May 21st, 2024

Add New Driver

Driver Information

First Name *	<input type="text"/>
Last Name *	<input type="text"/>
Reference ID	<input type="text"/>
Driveri DriverID *	<input type="text"/>
Country *	United States <input type="button" value="v"/>
Timezone *	US/Mountain <input type="button" value="v"/>
Email Address	<input type="text"/>
Phone Number	<input type="text"/>
Alert Preference	<input type="checkbox"/> Email <input type="checkbox"/> SMS <input type="checkbox"/> Garmin

* required

Enter details for this driver. The contact details can override those for the vehicle while the driver is assigned.

Note. The RefID is no longer the primary identifier for Driver Sync.