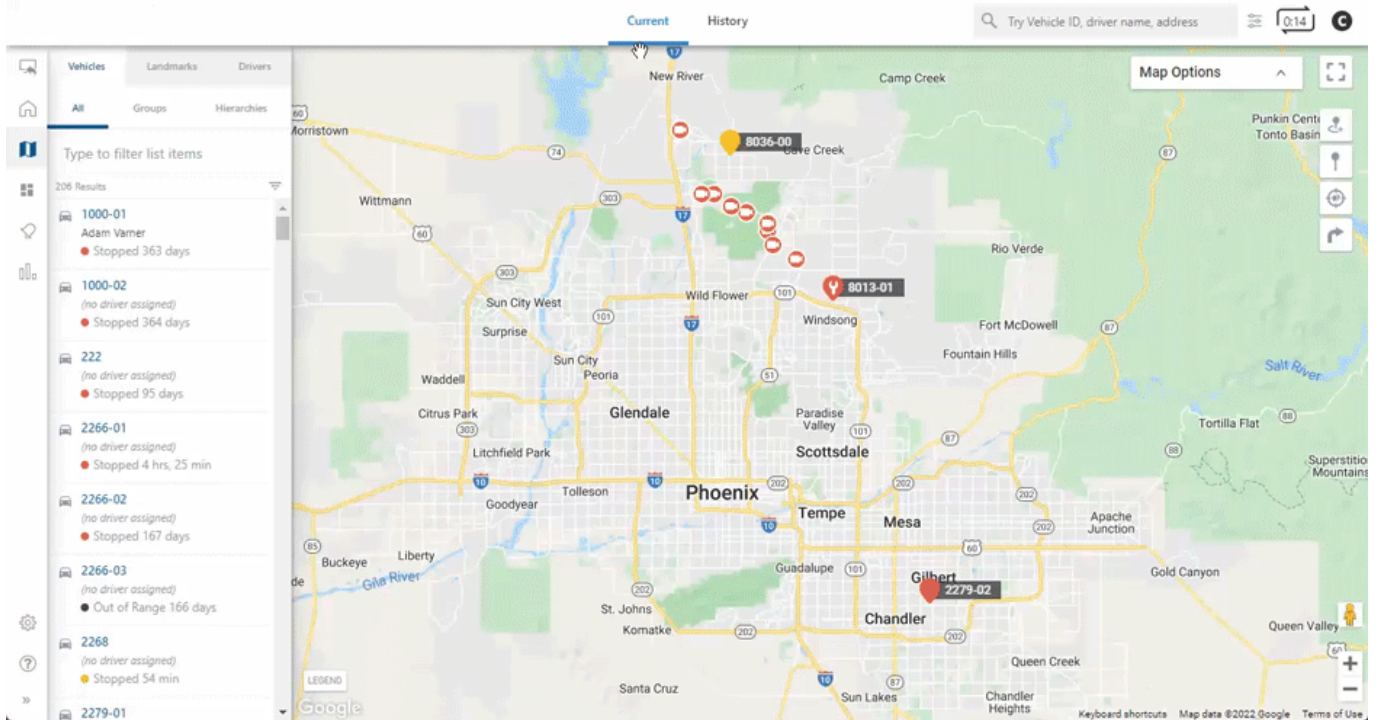


Link: <https://help.gpsinsight.com/docs/about-the-map-page/using-trip-history/using-location-playback/> Last Updated: May 3rd, 2022




Use the location playback function to view all vehicles and assets that have entered a precise boundary on the map.

## Viewing Location Playback

Location playback allows you to view your fleet's travel history within a specific area on the map.



### ► To use location playback:

1. From the map, click the History tab.
2. Zoom into the location of interest.
3. Click the Location Playback icon (  ) in the top right corner of the screen.  
The Time Range window will appear.
4. Select the date and time range (you can view up to a 3 hour time range).
5. Click View History.
6. If you would like to change the playback speed, click the settings button (  ) in the right corner of the playback bar.  
You can adjust the speed at: Normal, 2x, 4x, 8x, 16x and 32x.
7. Once selected, click the Play button (  ) to view location playback.