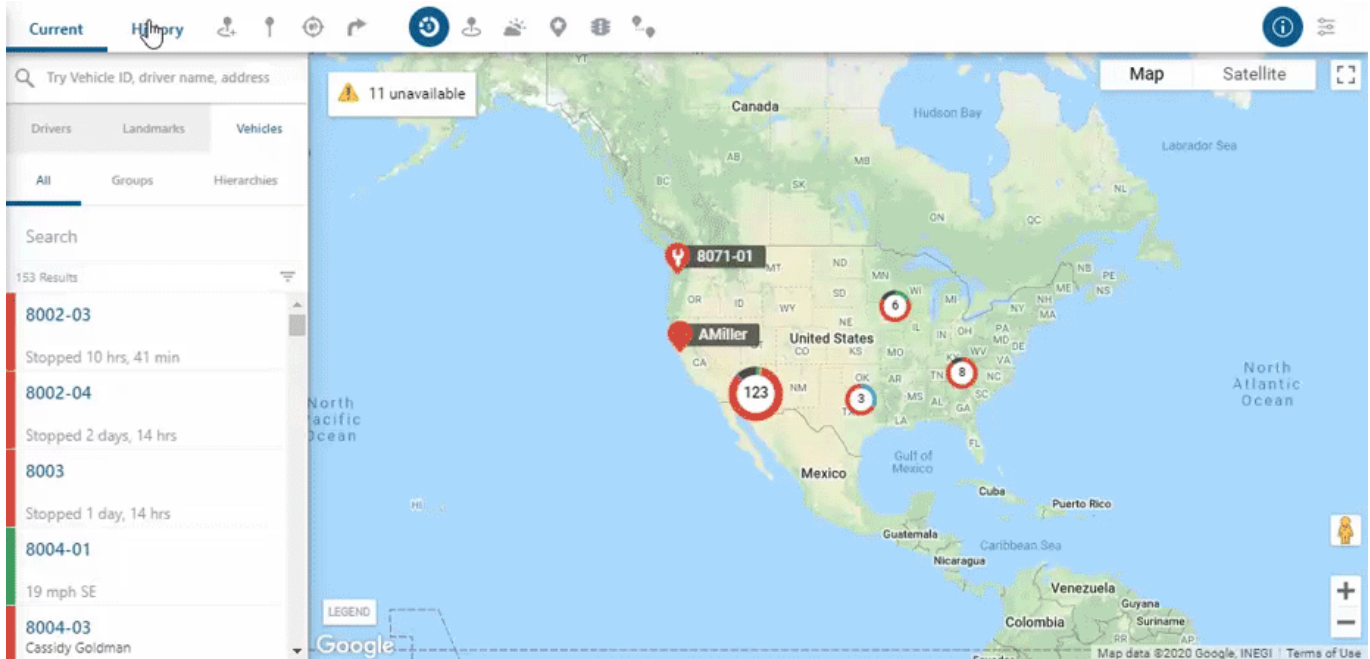




Link: <https://help.gpsinsight.com/docs/about-the-map-page/using-trip-history-and-location-playback/using-landmark-history/> Last Updated: August 14th, 2020

Use The Landmark History function in the map to monitor your fleet's landmark activity throughout each workday.



## ► To use Landmark History:

1. From the map, click the History tab in the data source selector.
2. Click the Landmarks tab below the History tab.
3. Search and select the landmark you would like to view.
4. Select a date and time frame from the Time Range window, then click View History.
5. If you would like to change the playback speed, click the settings button (  ) in the right corner of the playback bar.  
You can adjust the speed at: Normal, 2x, 4x, 8x, 16x and 32x.
6. Once selected, click the Play button (  ) to playback the vehicle(s) landmark history.