

# Using the Stop Detail and Idle Time Report



Link: <https://help.gpsinsight.com/docs/about-reports/using-the-stop-detail-and-idle-time-report/> Last Updated: April 11th, 2016

This report shows stop detail and idle time. You can filter by vehicle/group, date, minimum idle time, and minimum stop duration. Optionally include overlapping trips, efficiency, and columns for attribute(s).

## Report Details

The legend on the report color-codes the stops according to stop duration (0-15 min = green, 15-30 min = yellow, 30 min-8 hrs = red, >8hrs = white). Hover over values in the Trip Duration or Trip Distance columns to see the system's fastest and shortest estimated times or mileage for that proposed route; click the tool tip to run the Route Efficiency Detail report for that trip, which allows you to compares the vehicle's actual trip with alternative proposed routes (fastest and shortest).

### Vehicle Stop Detail and Idle Time Overview »

<b>Total Days Driven</b>	1 day	<b>Showing Stops</b>	>= 3 min
<b>Total Trips</b>	8 trips	<b>Earliest Start Time</b>	Mar 5, 2016 8:23:07 AM
<b>Total Distance</b>	97.4 miles	<b>Latest Stop Time</b>	Mar 5, 2016 6:19:33 PM
<b>Total Violations</b>	4 idle stops	<b>Landmarked Stops</b>	0 of 1 (0%)
<b>Total Drive Time</b>	2 hrs, 20 min	<b>Selected Vehicle</b>	FLATBED-31 (vin: 5FNRL384878031208)
<b>Total Idle Time</b>	14 min	<b>Report Time Period</b>	Mar 5 12:00 AM to 11:59 PM (MST)
<b>Total Operating Time</b>	2 hrs, 34 min	<b>Report Time Overlap</b>	Include Overlapping Trips
<b>Total Stop Time</b>	1 day, 23 min	<b>Report Created</b>	March 8, 2016 9:18:07 AM
<b>Showing Idle Stops</b>	>= 2 min		

**Stop Legend »**

- Stops > 8 hrs
- Stops from 30 min-8 hrs
- Stops from 15 min-30 min
- Stops from 0-15 min

Export Data Browser Map Schedule This Email Report

\* Landmarks over 3.8 miles wide have been excluded.  
 \* Duration/Distance compared to Fastest or Shortest routes on trips > 3mi.

---

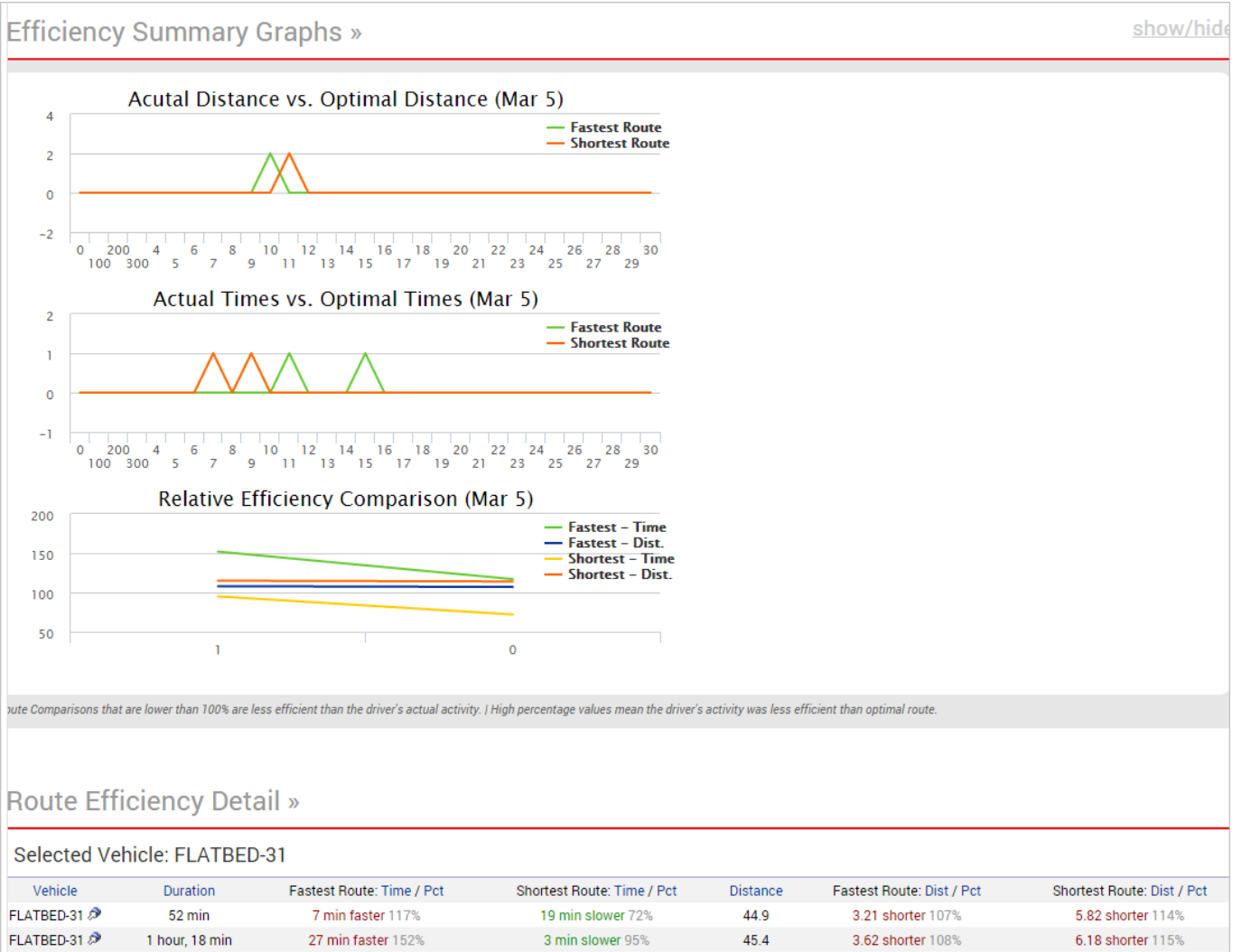
### Vehicle Stop Detail and Idle Time Report »

FLATBED-31

Trip	Driver	Trip Date	Trip Time	Trip Duration	Stop Time	Stop Duration	Trip Distance*	Total Distance*	Odometer	Stop Location
Start	Lisson, Kristin	Mar 4			5:59 PM to 8:23 AM Mar 5					Dispatch Center E
1	Lisson, Kristin	Mar 5	8:23 AM to 8:29 AM	6 min	8:29 AM to 8:33 AM	4 min	2.6 mi.	2.6 mi.	62,412.9 mi.	12046 N Tatum Blvd, Phoenix, AZ
2	Lisson, Kristin		8:33 AM to 8:35 AM	2 min	8:35 AM to 10:02 AM	1 hour, 27 min	0.4 mi.	3.0 mi.	62,413.3 mi.	11526 N Tatum Blvd, Phoenix, AZ
3	Lisson, Kristin		10:02 AM to 10:09 AM	8 min	10:09 AM to 12:55 PM	2 hrs, 46 min	2.9 mi.	5.9 mi.	62,416.2 mi.	Dispatch Center E, Dispatch Center E, Dispatch Center E, Dispatch Center E, DispatchCenter E, Dispat
4	Lisson, Kristin		12:55 PM to 2:13 PM	1 hour, 18 min	2:13 PM to 2:32 PM	19 min	45.4 mi.	51.3 mi.	62,461.6 mi.	Murphys Bar and grill, Murphys Bar and grill, Murphys Bar and grill, Murphys Bar and grill, Phoenix-Mesa Gateway Airport, Phoenix-Mesa Gateway Airport, Phoenix-Mesa Gateway Airport, Phoenix-Mesa Gateway Airport, Phoenix-Mes
	Lisson, Kristin						51 min fastest, 1 hour, 21 min shortest; click to run Route Efficiency Detail			Dispatch Center E, Dispatch Center E, Dispatch Center E, Dispatch Center E, DispatchCenter E, Dispat

# Using the Stop Detail and Idle Time Report

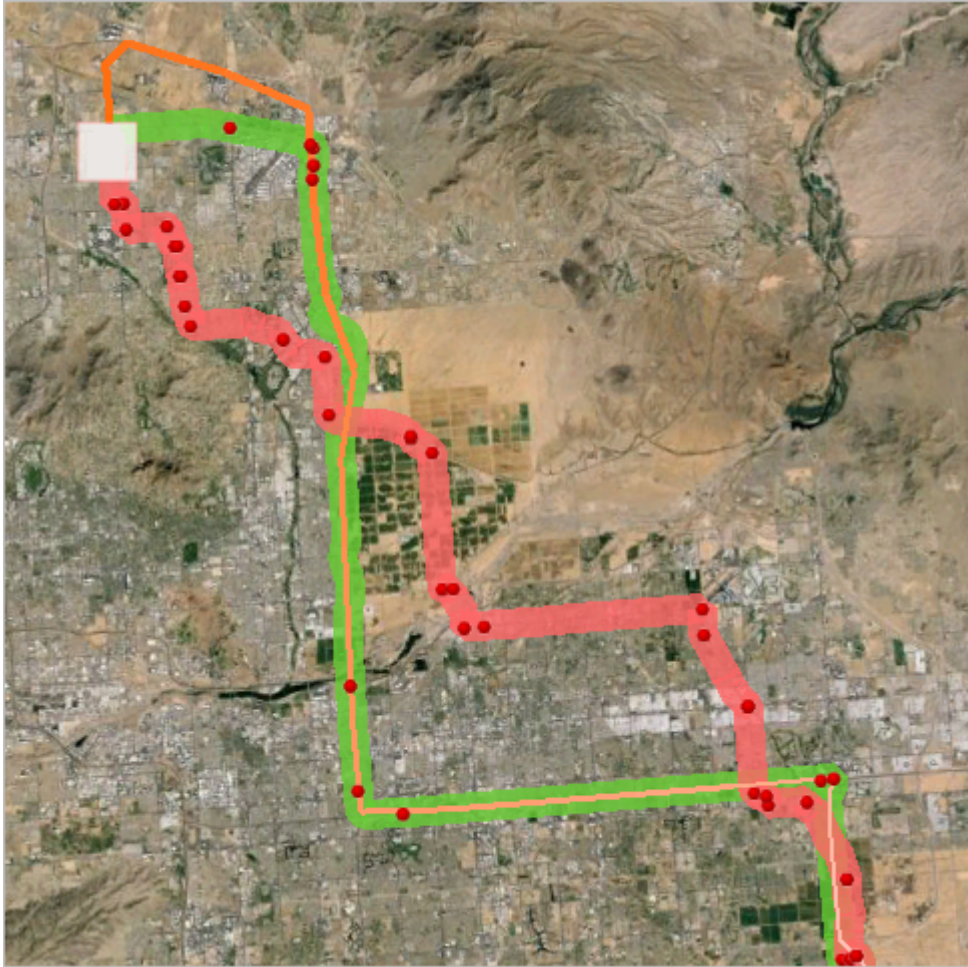
Link: <https://help.gpsinsight.com/docs/about-reports/using-the-stop-detail-and-idle-time-report/> Last Updated: April 11th, 2016



Click the Export icon next to a line item to download the vehicle's history in 3D Google maps for a visual comparison. The shortest proposed route appears in red, the fastest proposed route appears in green, and the vehicle's actual route appears in orange. In this example, the vehicle's actual route most closely matched the system's calculated fastest route.

# Using the Stop Detail and Idle Time Report

Link: <https://help.gpsinsight.com/docs/about-reports/using-the-stop-detail-and-idle-time-report/> Last Updated: April 11th, 2016

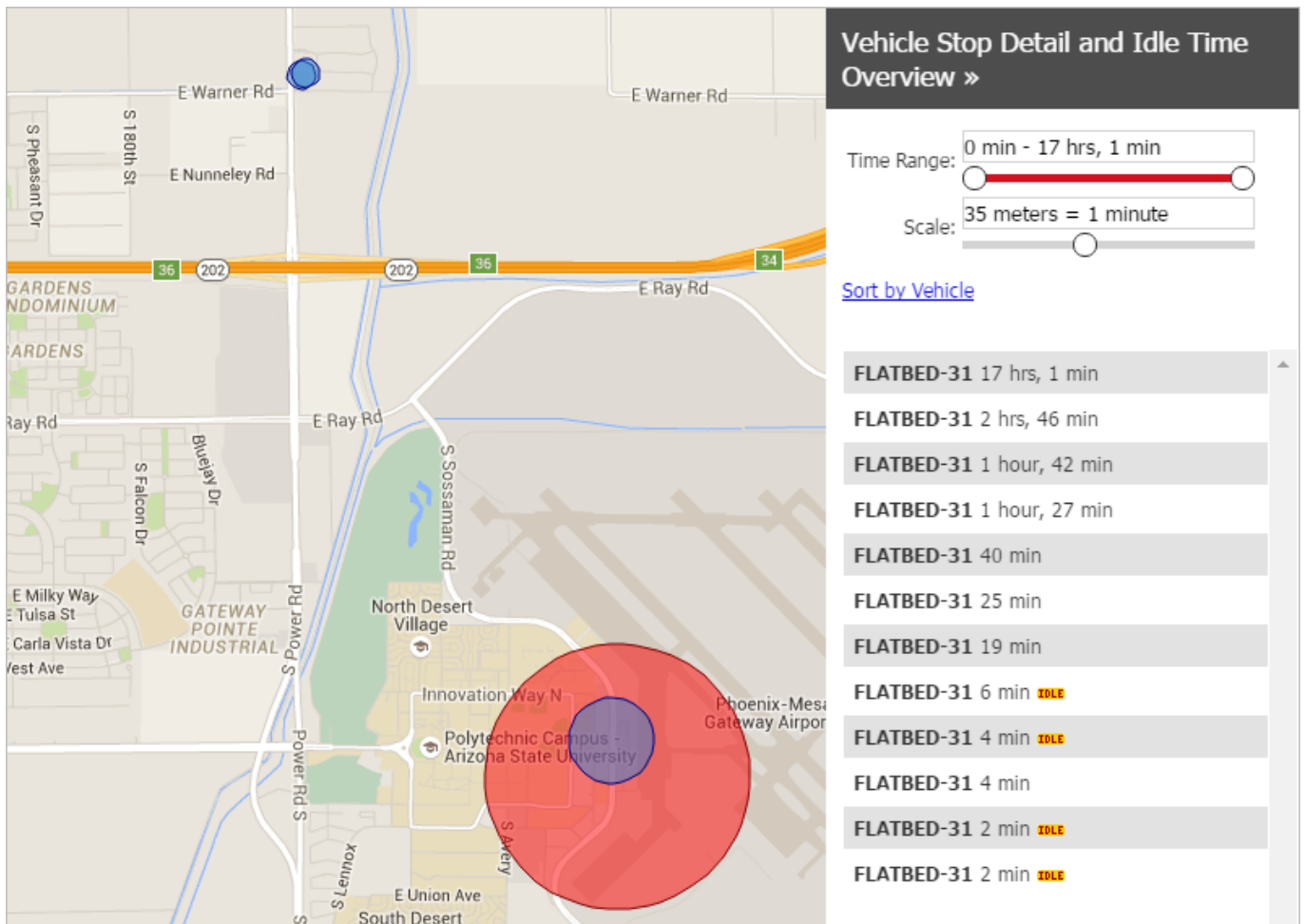


## Browser Map

Click the **Browser Map** button on this report to visualize your fleet's stops and idle times by displaying color specific circles on a map (red for stopped, blue for idle).

# Using the Stop Detail and Idle Time Report

Link: <https://help.gpsinsight.com/docs/about-reports/using-the-stop-detail-and-idle-time-report/> Last Updated: April 11th, 2016



**Vehicle Stop Detail and Idle Time Overview »**

Time Range: 0 min - 17 hrs, 1 min

Scale: 35 meters = 1 minute

[Sort by Vehicle](#)

- FLATBED-31 17 hrs, 1 min
- FLATBED-31 2 hrs, 46 min
- FLATBED-31 1 hour, 42 min
- FLATBED-31 1 hour, 27 min
- FLATBED-31 40 min
- FLATBED-31 25 min
- FLATBED-31 19 min
- FLATBED-31 6 min **SOLE**
- FLATBED-31 4 min **SOLE**
- FLATBED-31 4 min
- FLATBED-31 2 min **SOLE**
- FLATBED-31 2 min **SOLE**

- Click on a vehicle to limit the map view to only stops/idles for that vehicle. The rows on the right for that vehicle will highlight in yellow.
- See all stops/idles on the map again by clicking “display all”.
- Double-click the rows on the right and the map will zoom to that stop and pop up more info. (Clicking on the circles also pops up the same info.)
- Use the “Time Range” slider to filter out short or long stops.
- Use the “Scale” slider to adjust the size of the circles on the map. This is helpful if you filter out longer stops and want the circles to be bigger.
- Sort by stop duration or by vehicle.

# Using the Stop Detail and Idle Time Report

Link: <https://help.gpsinsight.com/docs/about-reports/using-the-stop-detail-and-idle-time-report/> Last Updated: April 11th, 2016

<b>Vehicle</b>	FLATBED-31	✕
<b>Driver</b>	Lisson, Kristin	
<b>Trip Date</b>	Mar 5	
<b>Trip Time</b>		
<b>Trip Duration</b>		
<b>Stop Time</b>	2 min <b>TOLE</b>	
<b>Trip Distance</b>		
<b>Total Distance</b>		
<b>Max Speed</b>		
<b>Odometer</b>	62,458.4 mi.	
<b>Stop Location</b>	6841 E El Porton Ave, Mesa, AZ , 6841 E El Porton Ave, Mesa, AZ , 6841 E El Porton Ave, Mesa, AZ , 6841 E El Porton Ave, Mesa, AZ	

