

A metrics scorecard is a special type of metric in that it typically contains a collection of other metrics/scores. The configuration tool allows you to experiment with weights and thresholds for each metric that will contribute to the total score, allowing you to visualize how your point system affects your actual fleet data.



Tip! Not sure what to measure? Consider **planning your scorecard** goals before getting your feet wet.



Note. You can only see vehicle data for the groups/hierarchies that you are allowed to see; however, you can see all scorecards that other users have created. Use caution when editing the properties of another user's scorecard without their knowledge.

EXAMPLE

The corporate fleet manager at Company XYZ wants to implement a scoring system for aggressive driving, which includes posted speed events (11MPH over), acceleration events (.45g), and deceleration events (.45g). He wants to score his fleet on a monthly basis to isolate regions who need the most coaching.

Add a Metrics Scorecard

A metrics scorecard is not required in order to create a Vehicle Scorecard metric. It's a visualization tool that allows you to experiment how different weights and thresholds apply to actual data in your fleet so that you can set realistic baselines.

► To add a metrics scorecard:

1. From the portal, hover over the **More** menu, click **Manage Metrics**, and click **Scorecard Configuration Tool**.

The Scorecard Configuration Tool page opens in a new browser tab.

1. From the New Scorecard window, enter a **Name** for the Scorecard. (We used "Aggressive Driving.")



Aggressive Driving

Note: Changing metric options, score weights, and scales will affect the scores historically. It may not be a good idea to convey scores until parameters are no longer being edited.

Name: Aggressive Driving ▼

Add A Metric:

Final Score Colors

0% 50% 100%

1. Add the metrics you want to include in the scorecard (i.e., Count Speeding Events, Count Acceleration Events, and Count Deceleration Events).



Tip! The available metrics to use here may not reflect all of the **available metrics** to use. If a metric is not listed, you'll need to manually create the Scorecard metric using the **Metrics Manager**.

1. For each metric, click **Edit** to modify the properties. The first thing you should do is edit the name to be meaningful. Other edits you can make include clicking on the scale to add another range value. Click a color to modify the color ranges to suit your preferences. In this example, a high score is desirable (i.e., fewer speeding events above 11MPH posted).



Note. The number of events you use for your thresholds apply to ONE vehicle per DAY. In this example, we're saying that one vehicle triggering 6+ speeding events per day is still worthy of 34 points. If it's easier to define thresholds for a longer time period, you can adjust the date range above the scorecard. If you do, you are still setting thresholds that apply to ONE vehicle, but it can be for one WEEK or one MONTH (or whatever range you choose). If you do change the date range, be sure to click **reset score** under each metric to auto-calculate a range based on current worst/best. Keep in mind, however, that you should base your lowest score on YOUR preferences for acceptability rather than what your worst driver happens to define.

1. Click **Done** when finished modifying the preferences for each metric.
2. Click the weight for each metric to adjust the percentage toward the total score. For example, you might want speeding to impact the score more heavily than accel/decel events.

All percentages in the scorecard should total 100%.

1. Click **Save Edits**. (Do NOT click Save Scorecard yet.)

The data in the report updates based on the settings in the scorecard. To modify the data used in the report, adjust the vehicle Group, Date Range, Average/Sum option, and Show Unutilized Vehicles option.



Note. Data must process for each day for each vehicle included in the date range each time you change settings in your scorecard. It's often best to experiment with weights and thresholds on a subset of vehicle (e.g., one hierarchy branch or group) rather than the entire fleet. If you change the date range, you should reset the thresholds (or manually adjust) that you applied in step 4 to reflect the days in the range.

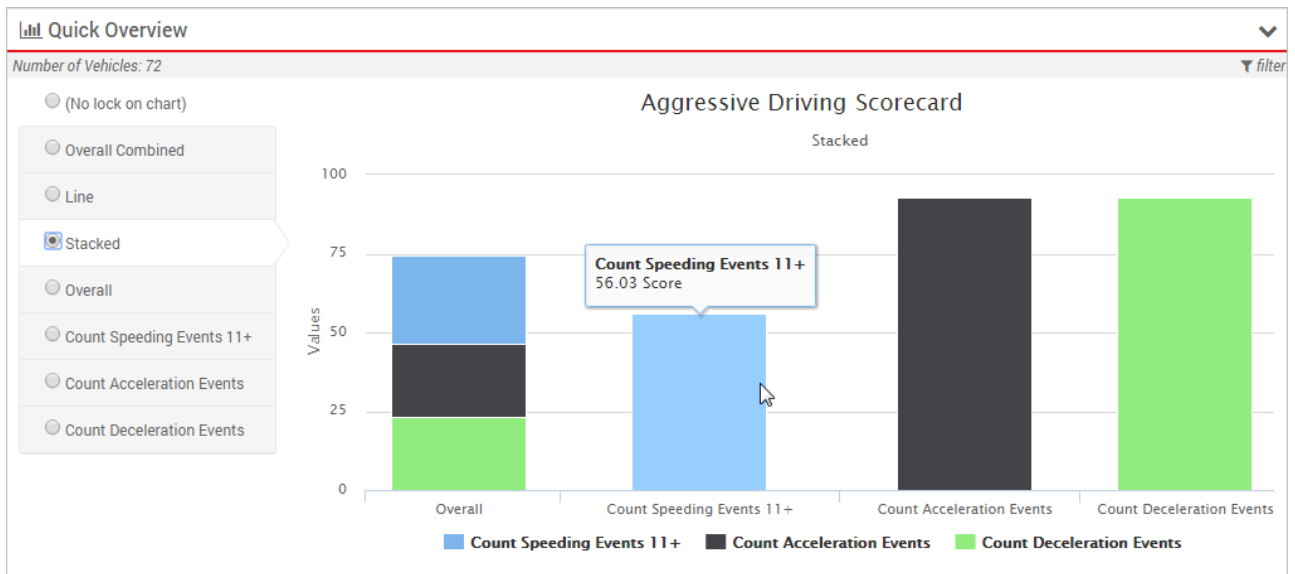
In the Company XYZ example, the points assigned to the various thresholds in each metric provide an overall fleet score of 74 (sorted by lowest Final Score). From here, you can decide if you want to adjust thresholds or if you're satisfied with this baseline.

Configuring a Metrics Scorecard

Link: <https://help.gpsinsight.com/docs/about-metrics/configuring-a-metrics-scorecard/> Last Updated: September 21st, 2016

Vehicle List											filter
Group: ALL VEHICLES		Dates: Jul 25, 2016 - Jul 31, 2016									
<input type="radio"/> Average <input checked="" type="radio"/> Sum <input type="checkbox"/> Show Unutilized Vehicles											
Overall Score: 74											
Vehicle	Current Driver	Miles	Drive Time	Count Speeding Events 11+	Count Speeding Events 11+ Score	Count Acceleration Events	Count Acceleration Events Score	Count Deceleration Events	Count Deceleration Events Score	Rank (sorted by score then vehicle label)	Final Score
Keith Jensen ELD	Jensen, Keith	47.04	1.11	11.43	0	2.14	64	1.43	76	72	35
Tundra Scott	Harder, Scott	47.39	1.49	7	17	4.57	24	0.86	86	71	36
EB-E		46.14	1.74	15.29	0	1	83	1.71	71	69	39
Patty PNP		36.34	1.19	6.14	32	0.43	93	10.43	0	69	39
Ray Explorer PNP (Buzzer)	Krook, Ray	30.82	0.84	17	0	1	83	1.4	77	68	40
DG-Buzz		11.2	0.32	9.43	0	1.29	79	0.71	88	66	42
SM ES-330		62.93	1.72	9.86	0	1.29	79	0.71	88	66	42
Nav2 Seat Belt Test		50.83	1.11	74.6	0	0	100	0.4	93	64	48
Matt K PNP	Kill, Matthew	117.09	2.08	36.71	0	0.14	98	0.29	95	64	48
Scion GPSI	Anderson, Trent	43.46	0.88	11.71	0	0	100	0.14	98	58	49
Adam 3900iVB		48.81	1.09	16.2	0	0	100	0.2	97	58	49
Meg Mac	MacComiskey, Meghan	83.49	1.98	20	0	0.33	94	0	100	58	49
Trent PNP Travel		76.93	2.04	13	0	0.17	97	0.17	97	58	49
Monstro	Anderson, Clayton	182.67	4.19	38.43	0	0	100	0.14	98	58	49
Ryan PNP Test	Washington, George	82.63	1.64	22.86	0	0.14	98	0.14	98	58	49
2G - AL Dodge 3900i		42.89	1.21	9.71	0	0	100	0	100	55	50
Truck 3334		45.9	1.43	34.57	0	0	100	0	100	55	50
Smith R.V.		381.9	10.23	36.33	0	0	100	0	100	55	50
Evelyn PNP	Lawson, Evelyn	55.6	1.31	7.71	5	0	100	0	100	54	52
SN - VBZ		27.37	0.93	6.71	22	0.71	88	0.71	88	52	55
Corn Altima		34.36	0.85	7.29	12	0	100	0.14	98	52	55
MoonPatrol	Kunzleman, Jeff	39.17	0.95	6.71	22	0.71	88	0.57	90	51	56
JW 3000B		21.97	0.85	3.57	55	2.57	57	2.43	60	50	57
LP E90 N55		33.07	0.93	6.57	24	0	100	0	100	49	62
AVG ELD		44.29	1.56	6.43	27	0	100	0	100	48	63
Mike's Toyota Carolla	Johannes, Mike	44.74	1.24	5.86	35	0.43	93	0	100	47	66
Chads Test Smog 42h buzzer		54.38	2	6	34	0	100	0	100	46	67
Adam G Prius (PNP Test)	Goldman, Adam	29.27	0.8	5.71	36	0	100	0	100	45	68
Lambo Test		49.63	4.17	4.71	44	0	100	0	100	43	72
Steven Accord	Payne, Steven	26.21	1.24	0.29	96	3.71	38	2.57	57	43	72
Xterra2	Rhodes, Kirk	26.74	1.35	0.17	98	4.67	22	1.5	75	41	73

Additionally, you can use the Quick Overview at the top of the page to view the scorecard using various chart types: Overall Combined, Line, Stacked, Overall, and Count (for each event on scorecard).



Save Metric Score

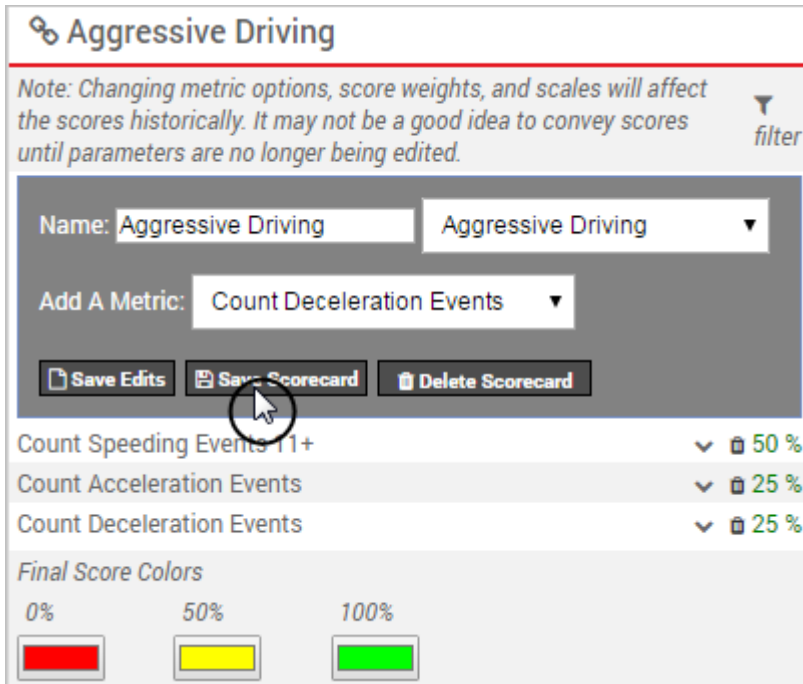
When you're satisfied with the scorecard you created, you can save the metric scores that make up the scorecard. Once you click **Save Scorecard**, you can edit the weights on the scorecard after clicking **Save Edits** without affecting the metric score or creating any new custom metrics; however, if you modify the weights or any of the settings within each metric after clicking **Save Scorecard**, a new metric score will be created each time.



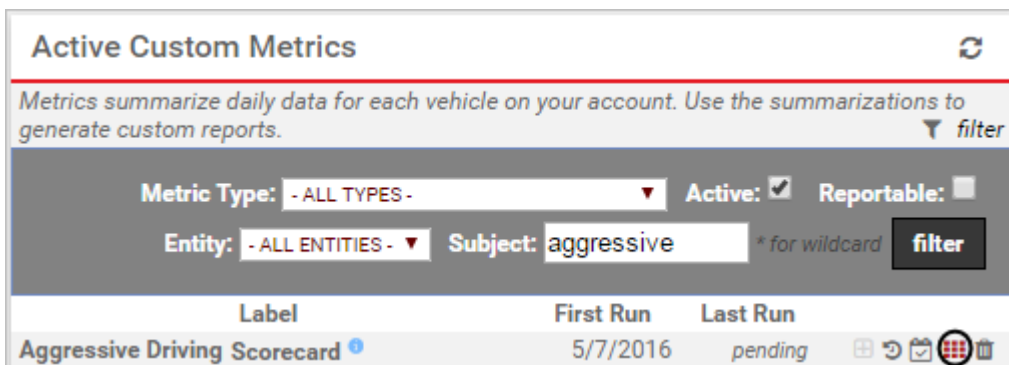
Note. You can only see vehicle data for the groups/hierarchies that you are allowed to see; however, when you save a scorecard, the portal generates metrics for all vehicles in the account (even if you can't see that data) for the date(s) specified. In other words, if the saving process is taking longer than you'd expect, keep in mind that the process may be running against a much larger data set than you can view. Similarly, if other users create scorecards, metrics for your vehicles will also automatically be back-filled for the date specified at the time of the save.

► To save metric scores:

1. From the Scorecard Configuration Tool, use the Scorecard drop-down to open the scorecard you finished editing.
2. Click **Save Scorecard**.



The new metric score will be listed in the Active Custom Metrics grid on the [Manage Custom Metrics](#) page. By default, Vehicle Scorecard metrics are automatically available for reporting.



View the Scorecard in Reports

After you create a scorecard, you can view it in report format in two places: The Metrics Reports (dynamic report) or the Metrics Scorecard Report (traditional report). It's highly encouraged to use [Metrics Reports](#) to view scorecard data so that you can better visualize trends and drill deeper into the data. It's considered an Executive Dashboard.

Metrics Scorecard Report (traditional)

The Metrics Scorecard report shows scores based on summarization data from the previous day. Metrics are calculated overnight for the day prior (12:00 AM - 11:59 PM).

► To run a Metrics Scorecard report:

1. From the dashboard, click the **Reports** menu, and click **Metrics Scorecard**.

2. Choose the **Group** of vehicles to include in the report.
3. Choose the **Scorecard** metric to apply to the report. (We chose “Vehicle Scorecard Aggressive Driving.”)
4. Click **Run Report**.

The report opens in a new browser tab.

Metrics Scorecard Overview »

Scorecard	Vehicle Scorecard Aggressive Driving	Vehicle Group	Company XYZ (15 vehicles)
Calculation		Report Time Period	Mar 15 12:00 AM to 11:59 PM
Sorted By	Vehicle	Report Created	March 15, 2016 9:52:14 AM

* Metrics are calculated overnight for the day prior. [edit](#)

Export Data Schedule This Email Report

Metrics Scorecard Report »

Date: Mon, Mar 14, 2016

^ Vehicle	Miles	Drive Time	Speeding Count	Deceleration Count	Acceleration Count	Speeding Score	Deceleration Score	Acceleration Score	Vehicle Scorecard Aggressive Driving
SN - PNPvb	1.9 mi.	9 min	6 events	0 events	1 events	52	100	92	74
SM ES-330	73.6 mi.	2 hrs, 28 min	43 events	2 events	5 events	0	84	60	36
FLATBED-31	24.6 mi.	1 hour, 22 min	26 events	0 events	0 events	0	100	100	50
DG-370Z	73.7 mi.	2 hrs	42 events	1 events	1 events	0	92	92	46
Corn Altima	36.4 mi.	58 min	23 events	0 events	0 events	0	100	100	50
Brent PNP-3000VB	56.1 mi.	1 hour, 55 min	141 events	7 events	0 events	0	44	100	36
B B 2014	0.0 mi.	< 1 min	0 events	0 events	0 events	100	100	100	100
Adam G Prius	37.4 mi.	1 hour, 18 min	29 events	0 events	1 events	0	100	92	48
Adam G Camry	20.1 mi.	40 min	12 events	0 events	0 events	4	100	100	52
APH PNP	140.8 mi.	2 hrs, 45 min	72 events	0 events	1 events	0	100	92	48
AL Liberty	34.3 mi.	1 hour, 53 min	57 events	1 events	0 events	0	92	100	48
AL 3900i	22.2 mi.	56 min				100	100	100	100



Tip! If you plan to use this data to compare trends over time, export the report to Excel. The next time you run the report for another date range, you can export the data again and compare it to the first export.