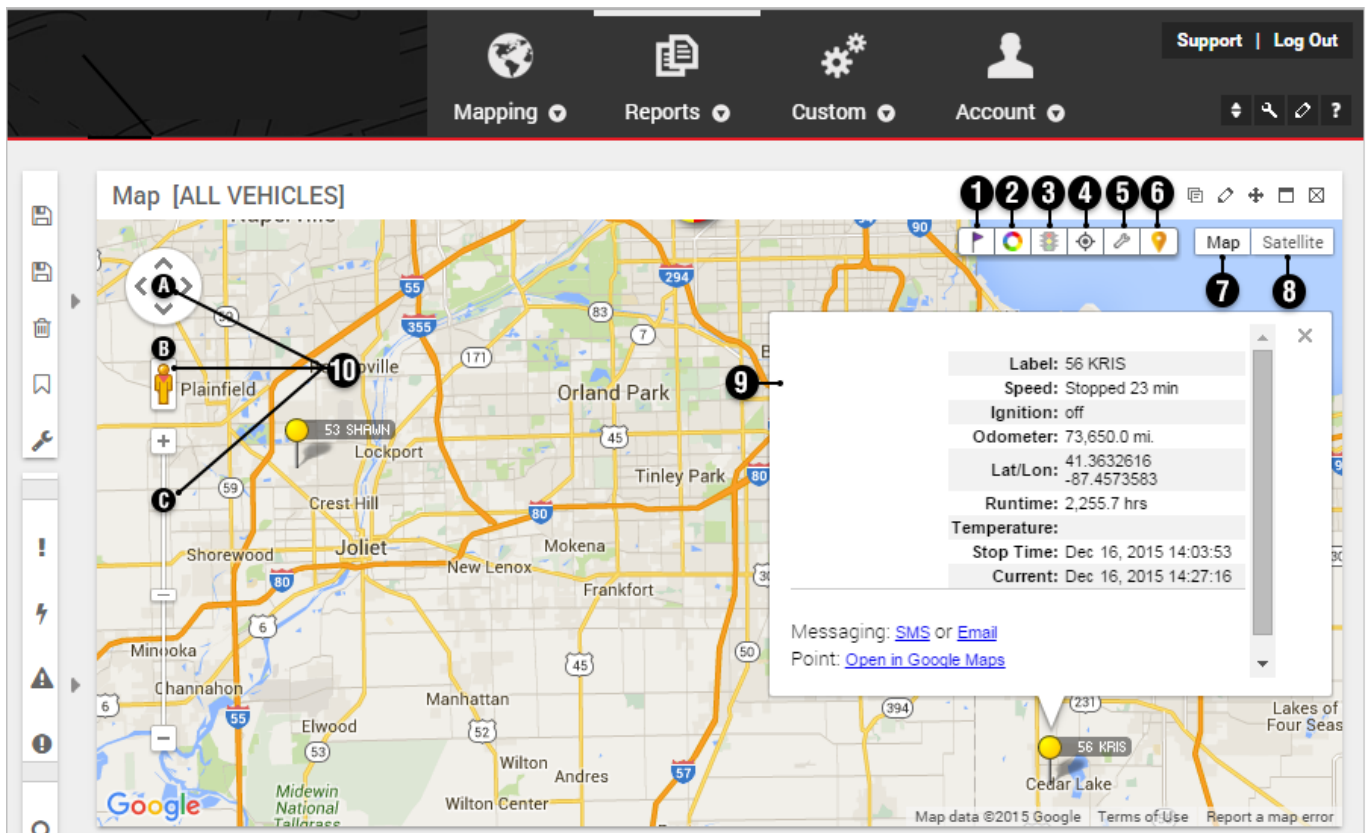
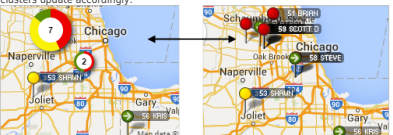
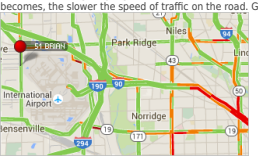
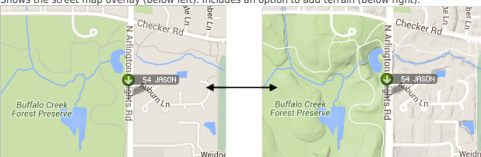


Using the Map Dashlet


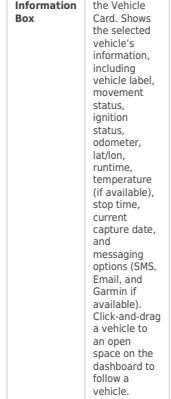


Link: <https://help.gpsinsight.com/docs/about-maps/using-the-map-dashlet/> Last Updated: July 27th, 2016

The Map Dashlet shows a 2D map with current locations of a selected vehicle group.



| # | Option | Description |
|---|---------------------------|--|
| 1 | Drop Pin | Dropping a pin allows you to place a pin on a map and move it as needed by dragging-and-dropping it to any location. You can then quickly dispatch to/from this location, route a Garmin to/from this location, obtain lat/lon coordinates and physical address, create a landmark for repeated use, or add the location to a route in the Route dashlet . |
| 2 | Clusters | Clusters represent more than one vehicle in a similar location. Clusters provide enhanced clarity when viewing a bird's eye view of a map with a large number of vehicles. The number in a cluster's center indicates the vehicles included, and the ring around the cluster indicates the statuses of the clustered vehicles. (Colors correspond to the map legend.) As you zoom in and vehicles appear farther apart, clusters update accordingly.  |
| 3 | Traffic | The Traffic toggle helps you identify the speed of traffic on the road compared to free-flowing conditions. For highways, green means there is a normal speed of traffic. The more red the road becomes, the slower the speed of traffic on the road. Gray indicates there is no data available.  |
| 4 | Center | The Center button automatically re-sizes and re-adjusts the current zoom level of the map to include all vehicles on the map. |
| 5 | Service Reminders | Toggle the service reminder indicator on or off. When on, a wrench icon appears over the vehicle's icon to indicate when a scheduled service is past due. Click on the vehicle to view the service reminder information in the Vehicle Card. |
| 6 | Points of Interest | Shows restaurants, businesses, parks, parking, and other points of interest. |
| 7 | Map View | Shows the street map overlay (below left). Includes an option to add terrain (below right).  |

Link: <https://help.gpsinsight.com/docs/about-maps/using-the-map-dashlet/> Last Updated: July 27th, 2016

| # | Option | Description |
|----|--------------------------------|--|
| 8 | Satellite View | Shows the satellite image overlay (left). Includes an option to turn off labels (right).  |
| 9 | Vehicle Information Box | Also known as the Vehicle Card. Shows the selected vehicle's information, including vehicle label, movement status, ignition status, odometer, lat/lon, runtime, temperature (if available), stop time, current capture date, and messaging options (SMS, Email, and Garmin if available). Click-and-drag a vehicle to an open space on the dashboard to follow a vehicle.  |
| 10 | Navigation Controls | A) Directional Control Arrows: Click the appropriate arrow buttons to move the view north, south, east, or west. B) Street View: Drag the yellow pegman to a location on the map for street-level imagery. (Click the X in the upper, right corner to exit.)  C) Zoom / Slider: Click + or - to zoom in or zoom out, or drag the zoom slider.  |

The following Map Dashlet options are available (🔗):

| Option | Description |
|-----------------|--|
| Custom Title | Enter a custom title to appear in the title bar of the dashlet. |
| Vehicle Group | Filter the map to show only vehicles that belong to a certain group or hierarchy tree (if available). |
| Show Vehicles | Filter the map to show only vehicles that are running, are stopped, or have been stopped for a particular time. |
| Vehicle Label | Set the primary vehicle label (default is Vehicle). |
| Alternate Label | Set the secondary vehicle label (default is Driver). |
| Landmark Group | Show landmarks on the map. |
| Map Options | Add/remove the zoom controller, the map type controller, and/or the auto center & zoom controller. Adjust the default zoom target and zoom level when the zoom control is invoked. Adjust the vehicle icon size (1 is largest) and landmark label size (1 is largest). |
| Dashlet Height | Adjust the dashlet height as it appears on the dashboard (Half, Normal, Twice, 3x). |
| Dashlet Group | Dashlet groups allow you to link two or more dashlets (where applicable). When linked, clicking on a vehicle from one dashlet updates the data in another dashlet. See more examples. |
| Update Interval | Choose how frequently the entire map should refresh (not dependent upon individual vehicle update rate). |