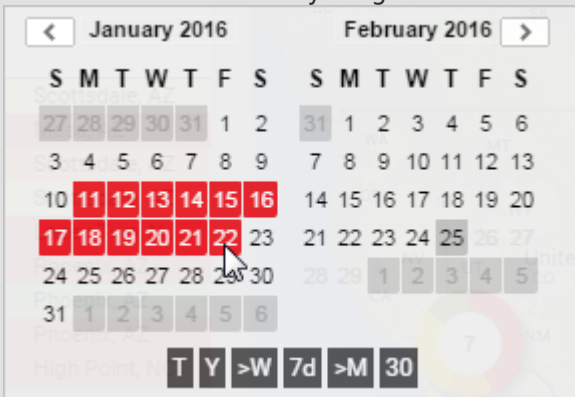


Using the 2D History Map

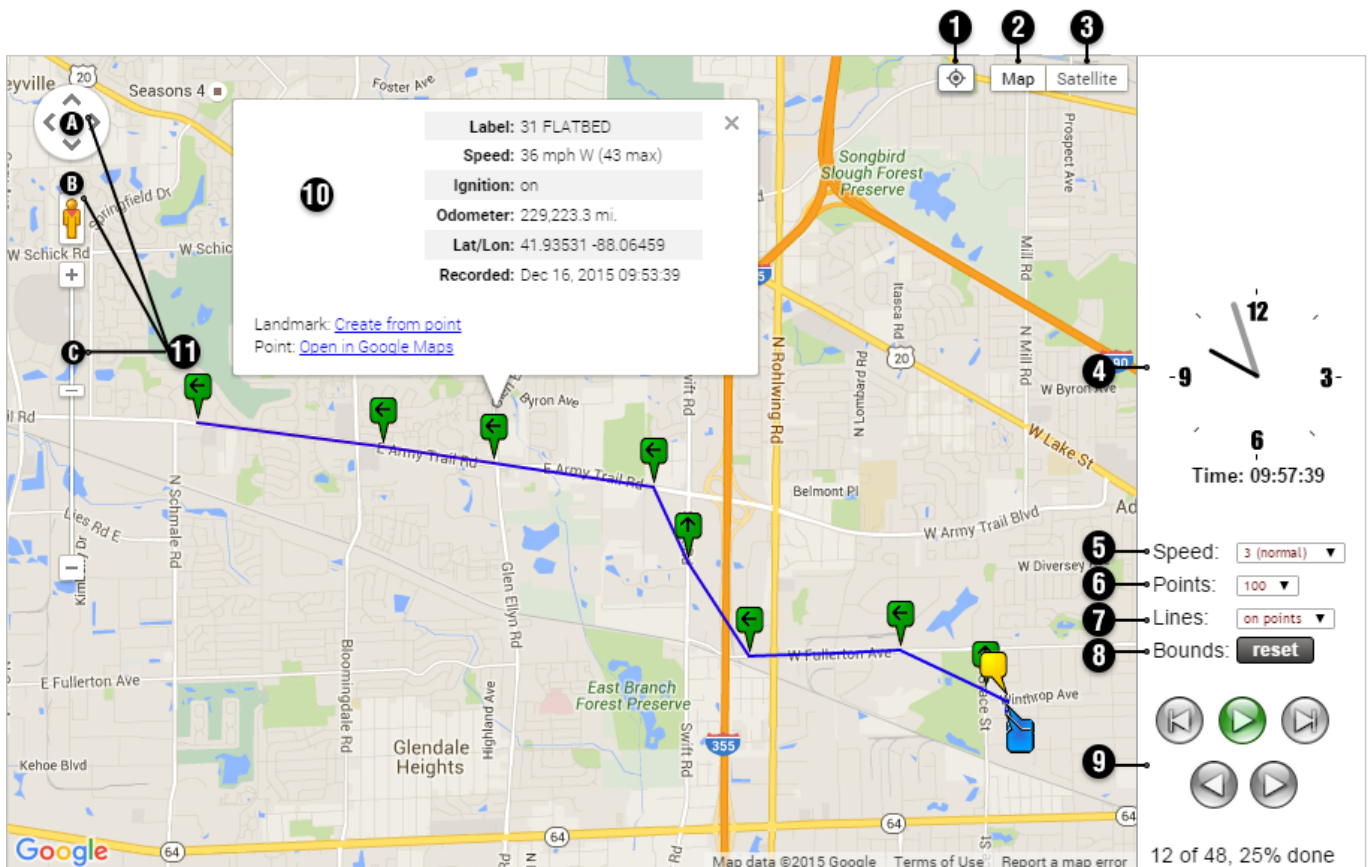
Link: <https://help.gpsinsight.com/docs/about-maps/using-the-2d-history-map/> Last Updated: April 11th, 2016

The 2D History map shows single-vehicle history with animation. Date choices include today, yesterday, week to-date, the past 7 days, month to-date, the past 30 days, or a custom range (up to 31 days at a time).

Note. Choose between T (today), Y (yesterday), >W (week-to-date), 7d (last 7 days), >M (month-to-date), 30 (last 30 days), a custom date selection on the calendar, or click the name of a month. To clear a selection, click the same date selection again, or click the a selected day (one at a time) to clear it from the selection. To quickly clear a large selection of days, click the “T” option to select today’s date, and then click the “T” (or highlighted date) again to de-select it. Once no dates are highlighted, select the beginning and end date of the desired time period to highlight the dates selected and everything in-between.

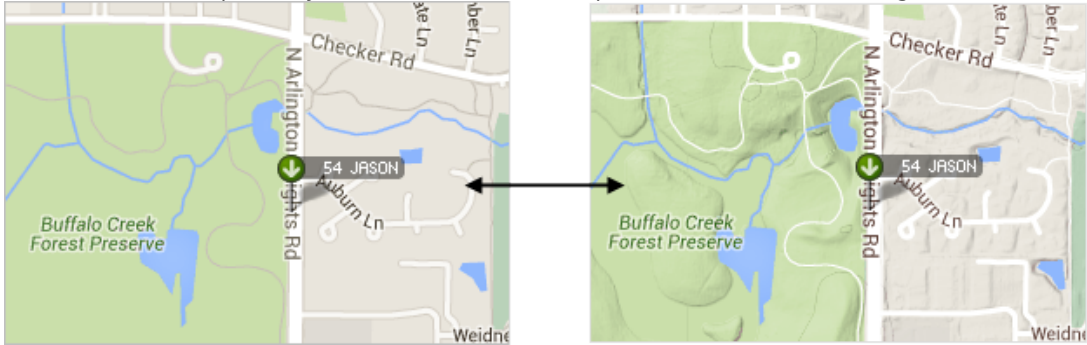



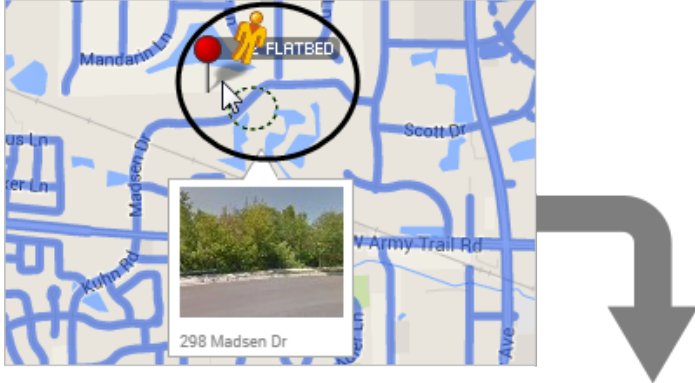
The 2D History map has the following features:



Using the 2D History Map

Link: <https://help.gpsinsight.com/docs/about-maps/using-the-2d-history-map/> Last Updated: April 11th, 2016

#	Option	Description
1	Center	Centers the map around the points in the currently loaded animation.
2	Map View	Shows the street map overlay (below left). Includes an option to add terrain (below right). 
3	Satellite View	Shows the satellite image overaly (left). Includes an option to turn off labels (right). 
4	Time	Displays the time at which the last point in the trail (currently loaded) was recorded.
5	Speed	Adjust the speed at which to display the animation. Choices include: 1 (slowest), 2 (slower), 3 (normal), 4 (faster), or 5 (fastest).
6	Points	Adjust the total number of points to show in the animation at one time.
7	Lines	Display a line for all points in the currently loaded animation or for all points in the entire trail (including points not shown).
8	Bounds	Centers the map around the points in the currently loaded animation.
9	Animation Navigation	Options include: Back, Play, Forward, Step Back, Step Forward. Click Play to automatically advance the animation according to the speed selected, or click Step Forward to manually advance the animation one point at a time.
10	Vehicle Information Box	Also known as the "Vehicle Card." Shows current vehicle information for a selected point in the trail. Optionally create a new landmark from a point or open in Google Maps from this point.

#	Option	Description
11	Navigation Controls	<p>A) Directional Control Arrows: Click the appropriate arrow buttons to move the view north, south, east, or west.</p> <p>B) Street View: Drag the yellow pegman to a location on the map for street-level imagery. (Click the X in the upper, right corner to exit.)</p>  <p>C) Zoom / Slider: Click + or - to zoom in or zoom out, or drag the zoom slider.</p> 