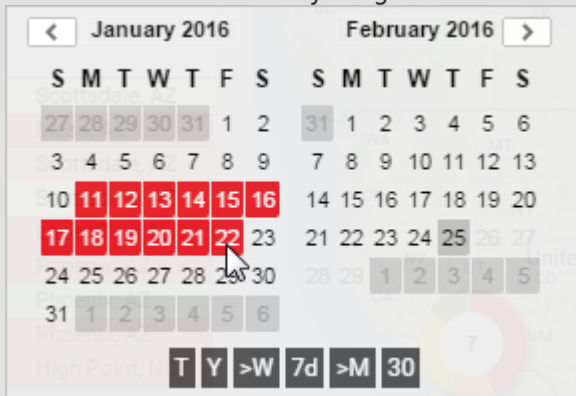


Link: <https://help.gpsinsight.com/docs/about-maps/using-3d-maps/using-the-3d-history-map/> Last Updated: September 21st, 2016

The 3D History map shows multiple-vehicle history with animation. Display choices include all points, all inputs, all stops, stops more than 5 min, stops more than 30 min, or stops more than 1 hour. Label choices include Time, Vehicle, Both, RefId, or None. You can also turn on/off minimap, show updated labels, organize points into folders by trip, and snap to roads.

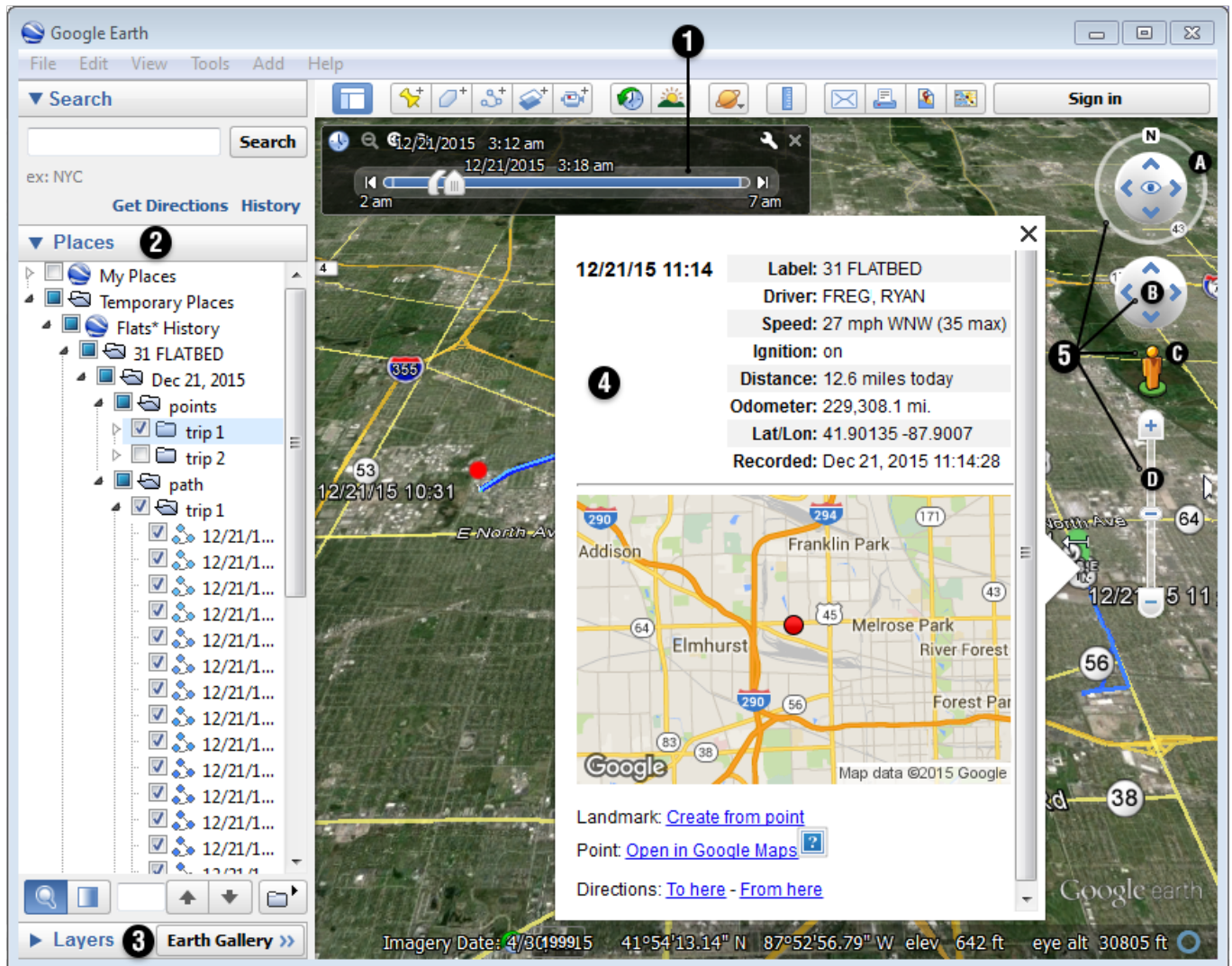
Tip! See [Using 3D Maps](#) to learn how to launch a 3D map from the portal.

Note. Choose between T (today), Y (yesterday), >W (week-to-date), 7d (last 7 days), >M (month-to-date), 30 (last 30 days), a custom date selection on the calendar, or click the name of a month. To clear a selection, click the same date selection again, or click the a selected day (one at a time) to clear it from the selection. To quickly clear a large selection of days, click the “T” option to select today’s date, and then click the “T” (or highlighted date) again to de-select it. Once no dates are highlighted, select the beginning and end date of the desired time period to highlight the dates selected and everything in-between.

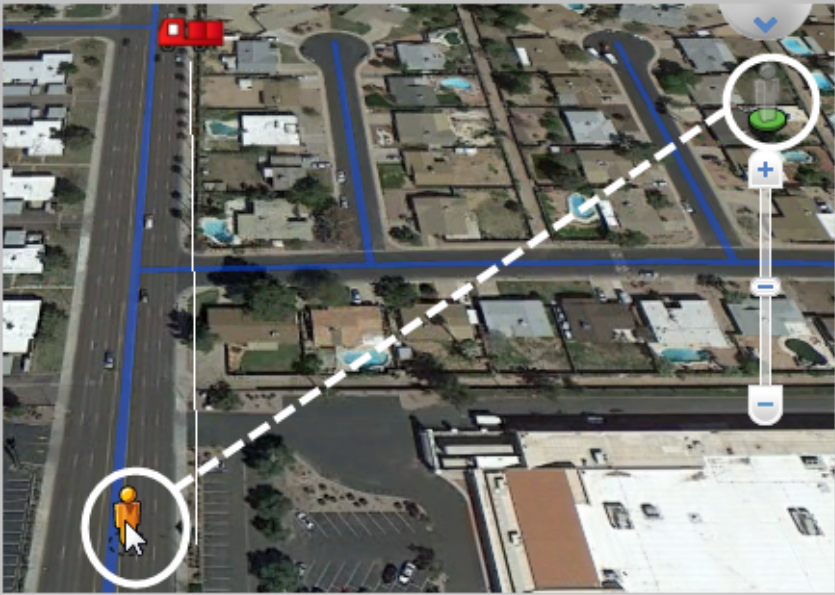



Using the 3D History Map

Link: <https://help.gpsinsight.com/docs/about-maps/using-3d-maps/using-the-3d-history-map/> Last Updated: September 21st, 2016





#	Option	Description
1	Time Slider	The time slider allows you to view an entire set of vehicle history at once (like a movie), or you can view data during a small time window. Click Play (⏮) to toggle time slider animation, manually drag the sliders, or click Step Forward (⏭) to advance the animation one point at a time. Adjust the number of points shown in the view by moving the begin/end markers. Click Options (⚙) to adjust auto animation speed and time zone. The figure above shows the path for a selected trip. Within the selected time period, several data points are shown—one of them is movement at 11:14 AM. Refer to the Google Earth Help for using other toolbar buttons.

#	Option	Description
2	Places Panel	<p>Locate, save, organize, and revisit places. When you run a 3D map from the portal, a new .kml file is downloaded to your computer and automatically loaded within Google Earth (represented by its own node in your "Temporary Places"). This node structure allows you to toggle on/off different places (.kml or .kmz files), layered within the same Google Earth window. The following example shows two separate places (3D mapping kml exports) for current "Phoenix" and "Mesa" vehicle groups:</p>   <p>Vehicles under each node are listed in alphabetical order. Colors and shapes represent vehicle status and icons set in the portal. Clear/select check boxes to turn off/on individual vehicles. Click a vehicle from the list or from the map to load the vehicle information box. Double-click a vehicle from the list or map to zoom in and view the location at eye-level. Right-click a vehicle from the map and click Properties to view all parent folders and the current point. (This is useful if you want to click on a series of nearby locations, such as checking light green "speeding pins" or stops.</p>

#	Option	Description
3	Layers Panel	Display points of interest and additional layers from the Google Earth Gallery: Borders and Labels, Places, Photos, Roads, 3D Buildings, Ocean, Weather, Gallery, Global Awareness, or More. (The most typical layers to turn on are Roads, Borders and Labels, and Places. Turning on too many layers at once can make the map overwhelming.) Refer to Overlays to learn more about importing landmarks and/or overlays from Google Earth into the portal.
4	Vehicle Information Box	Also known as the Vehicle Card. Shows the selected vehicle's information, including vehicle label, driver (if available), movement status, ignition status, odometer, lat/lon, temperature (if available), recorded date, current date (updates automatically with the live mapping option). Select a vehicle from the Places Panel or by clicking an icon on the map.

Link: <https://help.gpsinsight.com/docs/about-maps/using-3d-maps/using-the-3d-history-map/> Last Updated: September 21st, 2016

#	Option	Description
5	Navigation Controls	<p>A) Tilt/Rotate Control Arrows: Click the appropriate arrow buttons or drag-and-drop your mouse around the outer ring to adjust the tilt or rotation of the view. Alternatively, hold the CTRL key down with the mouse wheel to rotate the map.</p> <p>B) Directional Control Arrows: Click the appropriate arrow buttons to move the view north, south, east, or west.</p> <p>C) Street View/Ground View: Drag the yellow pegman to a location on the map for street-level or ground-level imagery.</p>   <p>D) Zoom / Slider: Click + or - to zoom in or zoom out, drag the zoom slider, or use the mouse scroll wheel. Zoom in and out with much better accuracy and control by holding the right mouse button down and dragging up and down. Additionally, double-clicking the right mouse button zooms you out a convenient amount, just like left double-clicking zooms you down a convenient amount. Click Tools > Options > Navigation to adjust the default fly-to and mouse wheel speeds.</p>