

The Drive360 camera generates alerts from G-Force-based events (acceleration, braking, turning, etc.,) offering in-cab audio alerts and video of the event available for viewing in the GPS Fleet Tracking Portal from the Camera Events section of Vehicle Cards.

## Alert Event Types

Default thresholds for the event types are provided below. If you would like to change any of the thresholds listed below, please contact your Account Manager.

- Hard Acceleration – Default .27g
- Hard Brake – Default .35g
- Hard Turn – Default .31g
- Power Lost



**Note.** Triggered when the device is disconnected from power. This is not to be confused with when the camera is in Rest mode upon Ignition Off status.

- Driver Initiated – Generated when the driver pushes the Manual Event button

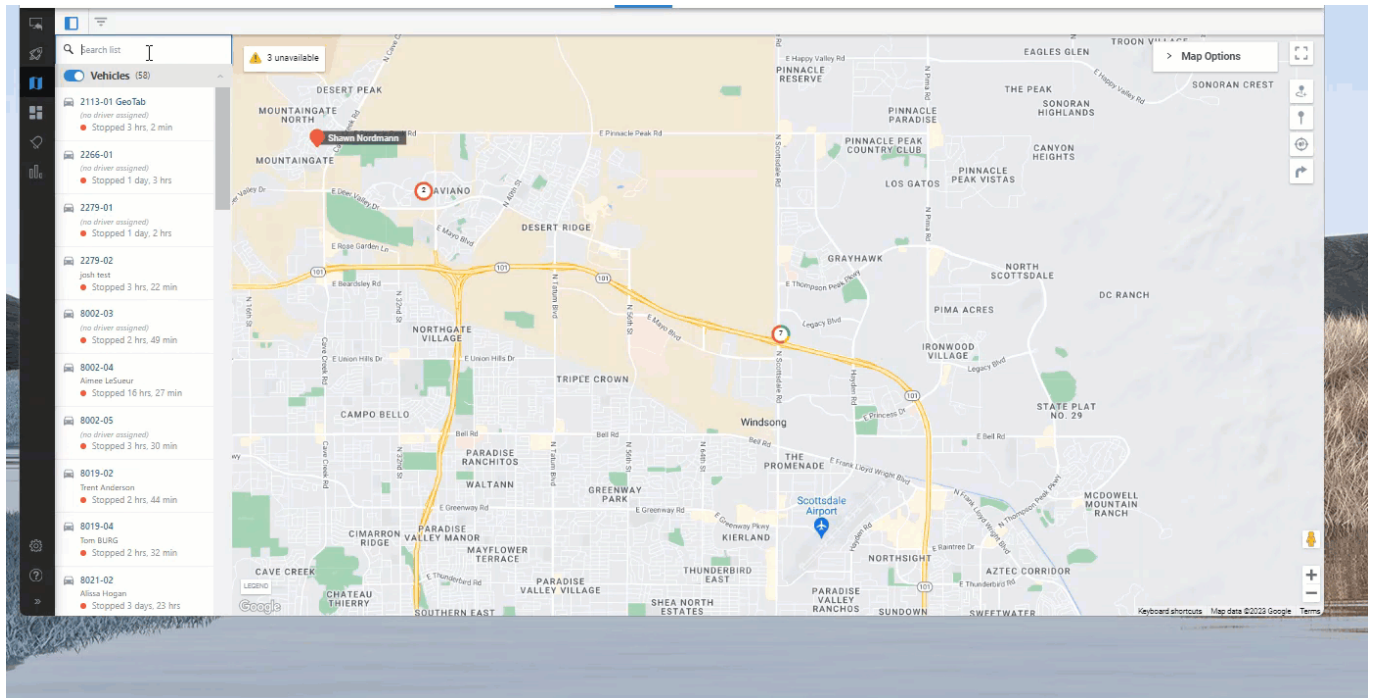
## GPS Tracking

For GPS Tracking, the Drive360 provides the following data points captured at a 1-minute update rate:

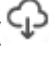
- Ignition Status
- Camera Events
- Power Events
- Trip Info
- Speeding Events (user-defined in GPS Fleet Tracking Portal)


## Requesting Camera Events

Camera Events from the last 30 calendar days are available from the Camera Events section of the Vehicle Card's Overview tab.



## ► How to Request a Camera Event:

1. From the Camera Events section, click the Download icon (  ) next to the camera event you would like to request.

A request is sent to the camera to transmit the video. Once the video is available, the icon is updated to a Play icon (  )



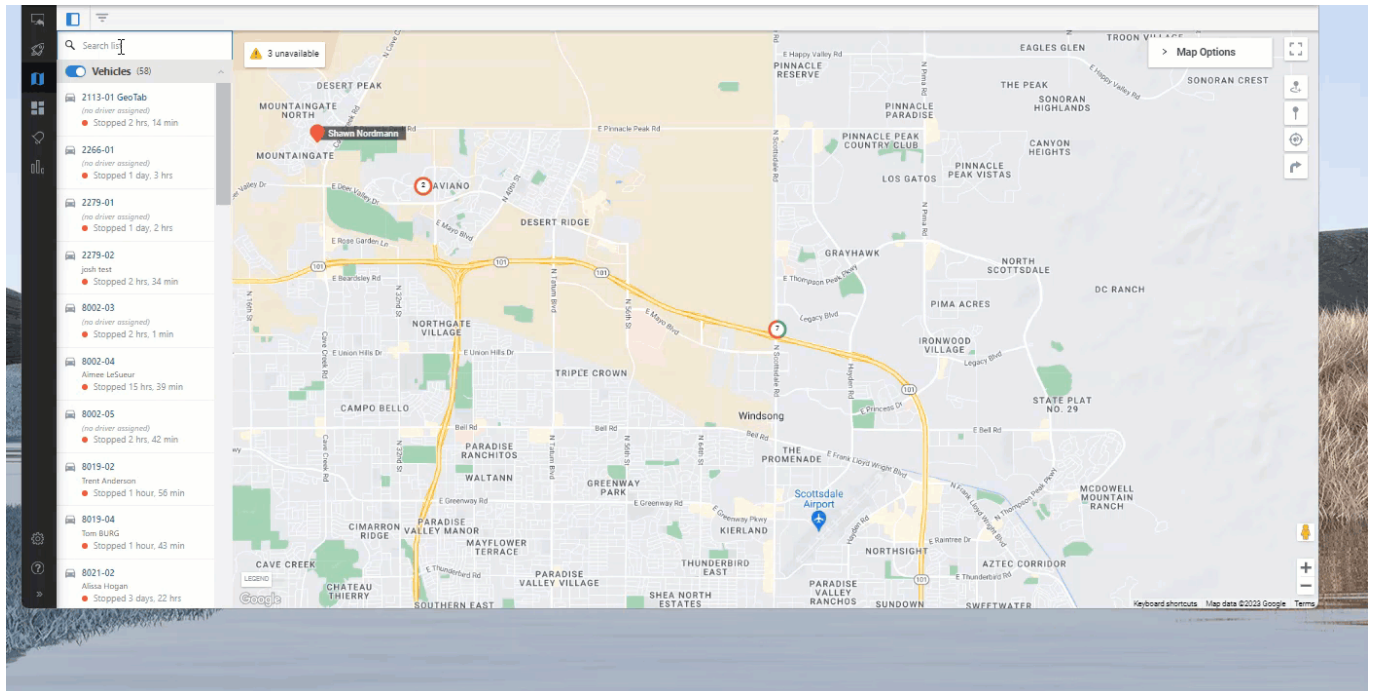
**Note.** The time it takes to download is impacted on whether the vehicle is on or off (vehicle must be in ON status to send the video).

2. Click the Play icon.



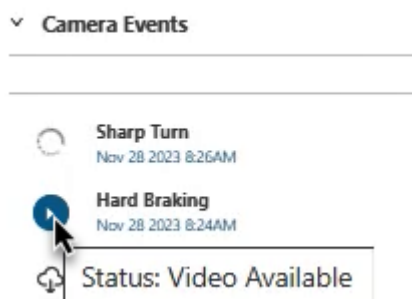
**Note.** Any camera events that take place during nighttime are recorded with nightvision; thus, the recording will be in black and white.

## Viewing a Camera Event



## ► How to view a camera event:

1. Once the status of the event reads “Status: Video Available” (indicated by the blue Play icon), click the Play icon.



A pop-up window appears with the playback of the event.

2. Click the Play button to play the video in Full View. The following actions are also available:

- **Unmute:** Unmute the video (muted by default) to hear audio.
- **Playback Rate:** Change the playback speed (1x, available).
- **Picture-in-Picture:** View the raw video file.
- **Split View:** See external and internal views simultaneously.
- **Rotation:** Rotate the camera angle.



**Note.** Within Full View mode (not Split View), you can click and drag in the video to



see different angles.

## Using Click & Drag

You can use the Click & Drag feature during video playback or while your video is paused to view different angles captured within the 360° view of the camera.



### ► How to use Click & Drag:

1. From the video playback (can be during active playback or paused video), click anywhere in the playback screen then use the mouse to drag the view to the desired position.



**Note.** The Click & Drag feature is not available from Split View mode.